

Appartement Megève 44 m²



PRIX DE VENTE : 663 000 €

EMAIL : LIMO@COLDWELLBANKER.FR

DESCRIPTION

MEGEVE - VILLAGE CENTER

Exceptional location, just a few meters from the entrance to the pedestrian zone, for this fully renovated 3-room apartment in the purest Megève tradition, with high-end amenities and quality materials. It benefits from an approximately 80 m² terrace, not overlooked, facing east-south-west, surrounded by fir trees and bordered by a small stream.

It comprises: an entrance hall with cupboard, a kitchen area, two bedrooms, one with cupboards, a separate toilet, a shower room and a living room opening onto the terrace and garden.

It is sold with a cellar.

Charges of €210 per month include: building and grounds maintenance, snow removal, elevator, property management, building insurance, and hot and cold water consumption.

CARACTÉRISTIQUES

Type de bien :	Appartement	Surface :	44.28 m ²	Ascenseur :	Oui
Nombre de lots :	25	Taxe foncière :	€1.00	NB de pièces :	3 rooms
NB de chambres :	2 bedrooms				

Les informations sur les risques auxquels ce bien est exposé sont disponibles sur le site Géorisques : www.georisques.gouv.fr

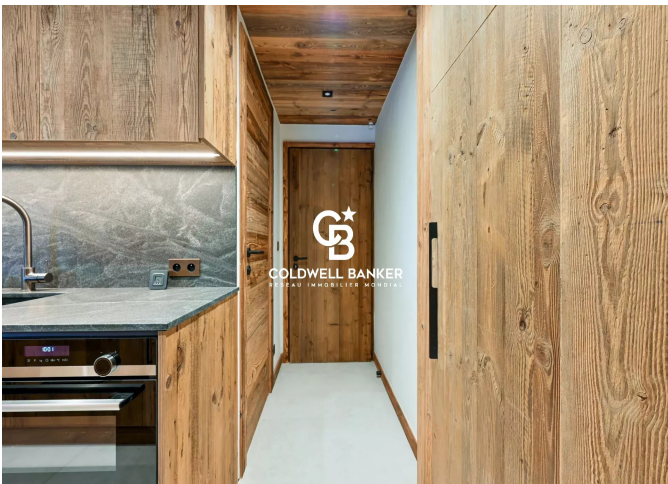
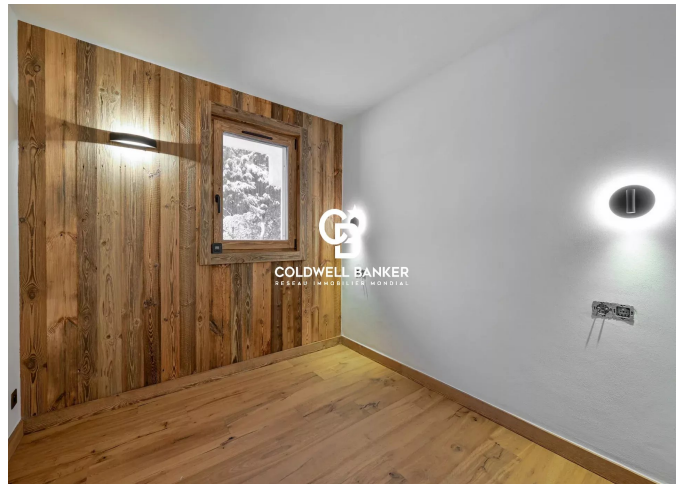
DIAGNOSTIC DE PERFORMANCE ÉNERGÉTIQUE

Diagnostic de performance énergétique (DPE) : D 236

Indice d'émission de gaz à effet de serre (GES) : B 9



COLDWELL BANKER
EUROPA REALTY



45 Rue de la Republique
France, 74700, Sallanches



limo@coldwellbanker.fr