

Appartement Neuilly-sur-Seine 98 m²



SALE PRICE : 1 450 000 €

EMAIL : WESTLIFE@COLDWELLBANKER.FR

DESCRIPTION

A first-floor apartment in a secure and guarded luxury residence built in 1968, facing Bois de Boulogne and just a few meters from the Jardin d'Acclimatation.

Spacious and very bright reception room of approximately 64m² with solid wood flooring, extending to a marble terrace facing Bois de Boulogne and south-facing.

Large approximately 25m² suite overlooking a quiet inner garden, with its private bathroom and equipped shower.

Fully equipped kitchen overlooking the garden with large windows.

Separate shower room and toilet.

Ample storage/closets and double dressing room.

FEATURES

Property type:	Appartement	Area:	98.0 m ²	Elevator:	Oui
Number of rooms:	2 rooms	Number of bedrooms:	1 bedroom		

Les informations sur les risques auxquels ce bien est exposé sont disponibles sur le site Géorisques : www.georisques.gouv.fr

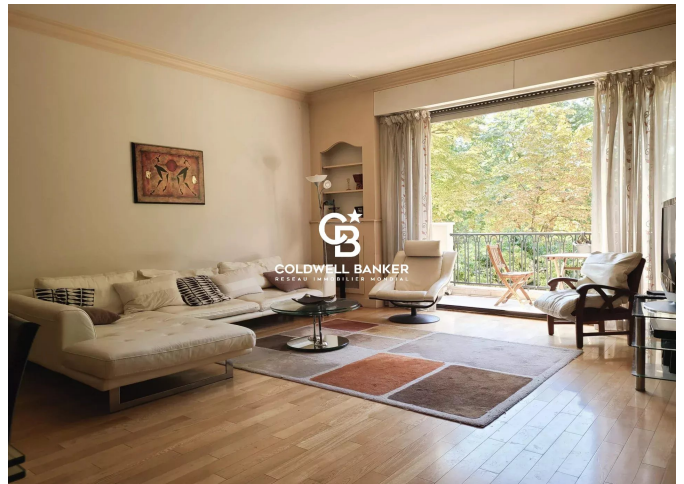
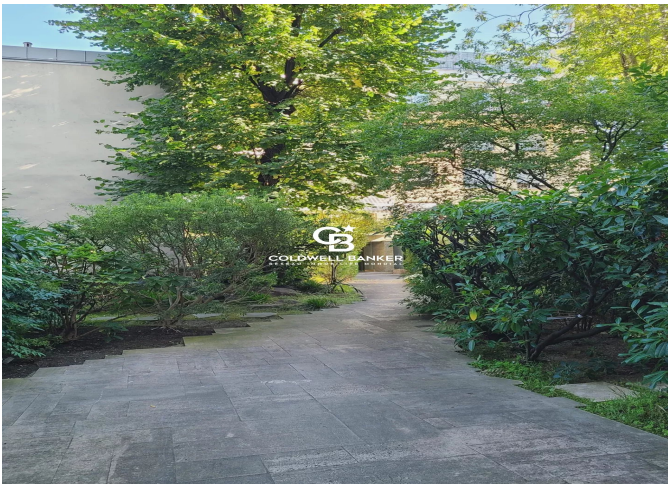
ENERGY PERFORMANCE DIAGNOSIS

Energy performance diagnosis (EPD): C 153

Greenhouse gas emissions (GHG) index: D 30



COLDWELL BANKER
EUROPA REALTY



12 rue Gabriel Péri
France, 92300, Levallois-Perret



PHONE : +33980771381
westlife@coldwellbanker.fr