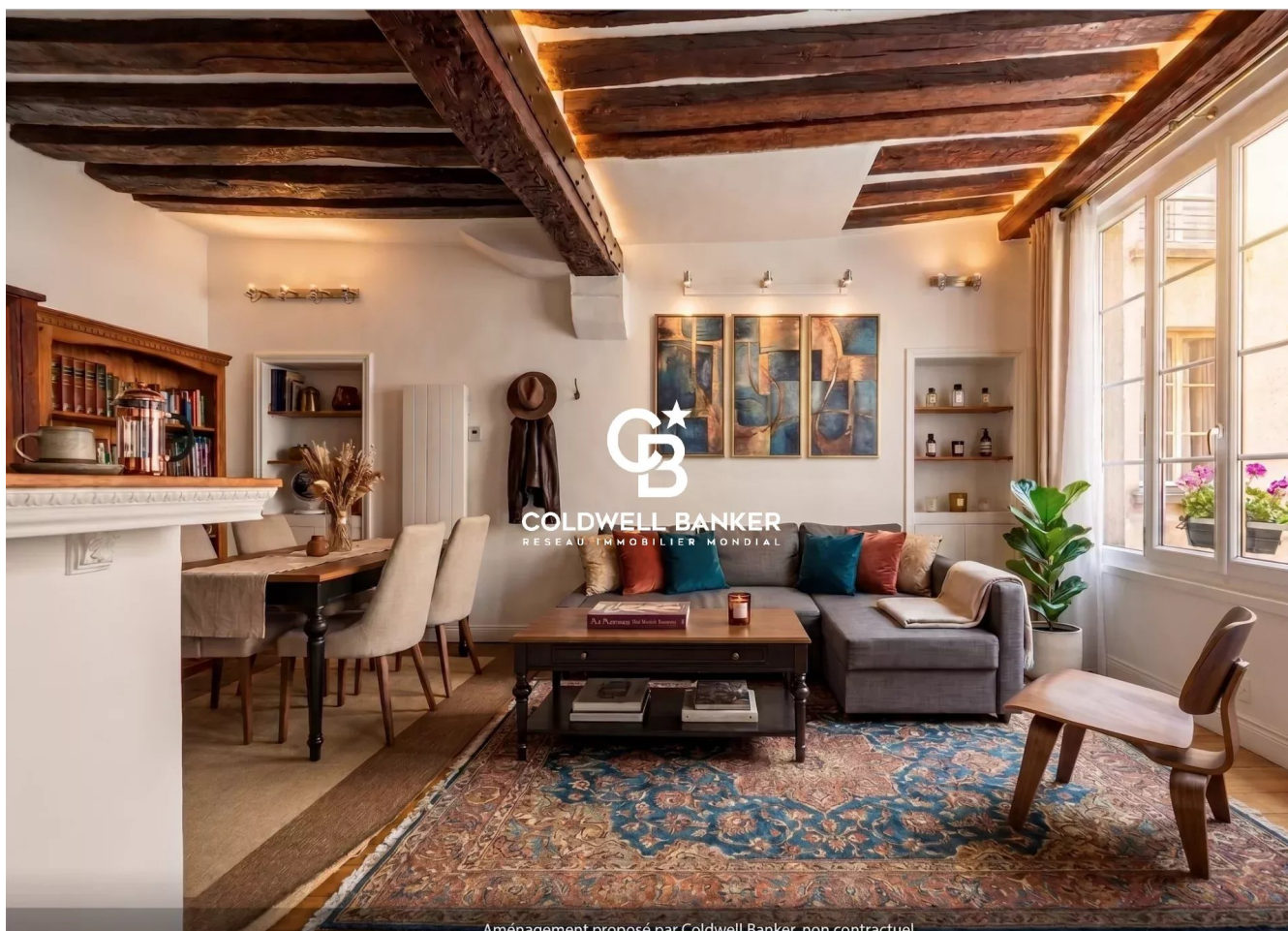


Appartement Paris 66 m²



PRIX DE VENTE : 998 000 €

EMAIL : PRESTIGE@COLDWELLBANKER.FR

DESCRIPTION

On the second floor of the Hôtel de Ville metro station, this superb duplex offers the charm of period features and contemporary comfort, all within a peaceful and secluded setting. Located in the heart of an interior courtyard, sheltered from the hustle and bustle of Paris, this rare property offers a true haven of peace in the very center of Paris.

From the moment you enter, the apartment captivates with its warm atmosphere and perfectly optimized layout. The period materials and features have been carefully preserved, giving the apartment a unique character: solid oak parquet flooring, exposed beams, high ceilings, and harmonious proportions all contribute to creating a living space that is both elegant and authentic.

The main level boasts a spacious open-plan living area, ideal for entertaining or enjoying moments of relaxation in a tranquil setting. The fully equipped kitchen integrates seamlessly into the living space, combining functionality and aesthetics.

Currently, the sleeping area comprises two bedrooms, each offering a comfortable and restful sleeping space. The layout allows for a smooth and pleasant flow of movement, perfectly suited to family life with a separate pied-à-terre. A modern bathroom with a walk-in shower completes the picture.

This duplex stands out not only for its undeniable charm but also for its exceptional location, allowing you to fully enjoy Parisian life: shops, restaurants, cultural venues, and public transport are all within easy reach, yet in absolute tranquility.

Rare on the market, this apartment is a unique opportunity for those who appreciate quality and are looking for a home that combines authenticity, comfort, and a prime location. A viewing is essential to fully appreciate its unique character and potential.

Sale price: €998,000 (seller's fees included)

Number of main units: 34 units

Annual charges: €1,700

Energy rating: F

Annual energy costs: between €1,950 and €2,660

"Information on the risks to which this property is exposed is available on the Géorisques website:
www.georisques.gouv.fr"

CARACTÉRISTIQUES

Type de bien :	Appartement	Surface :	66.27 m ²	Taxe foncière :	€1.00
NB de pièces :	3 rooms	NB de chambres :	2 bedrooms		

Les informations sur les risques auxquels ce bien est exposé sont disponibles sur le site Géorisques : www.georisques.gouv.fr

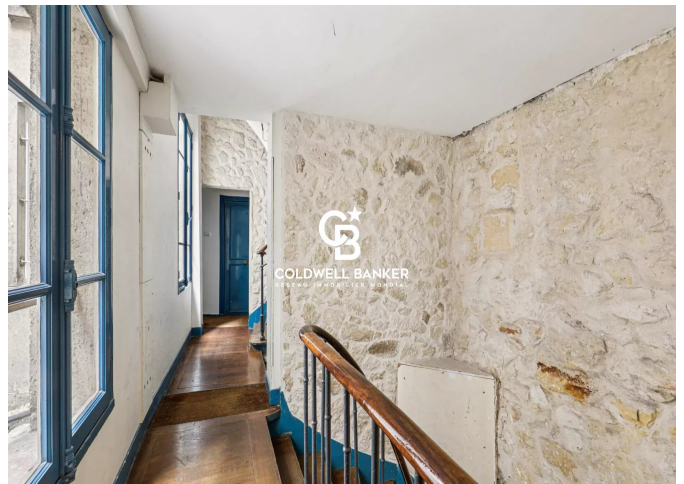
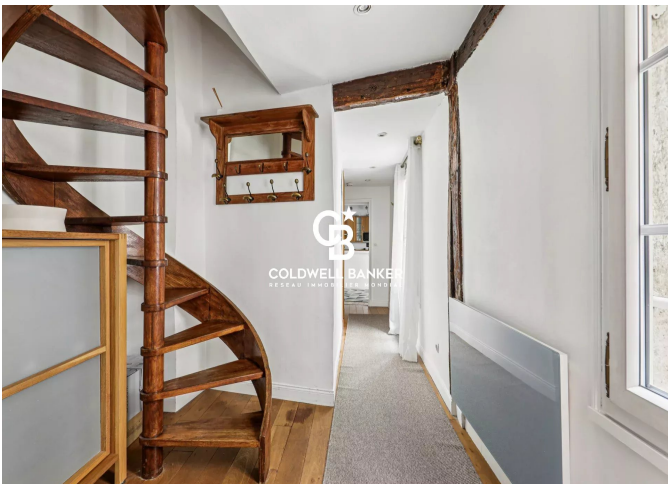
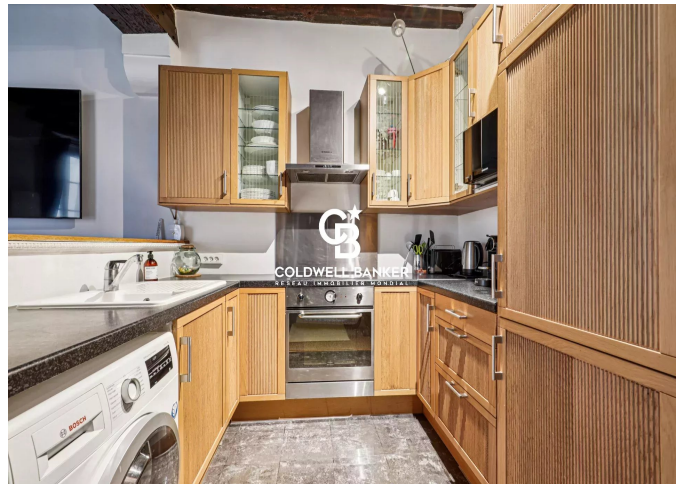
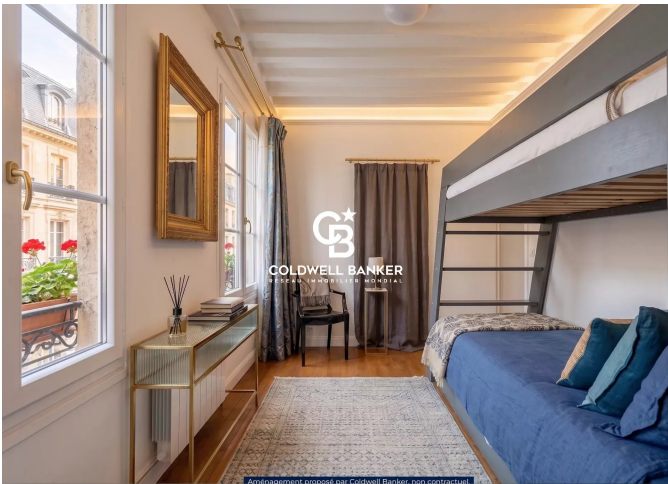
DIAGNOSTIC DE PERFORMANCE ÉNERGÉTIQUE

Diagnostic de performance énergétique (DPE) : F 384

Indice d'émission de gaz à effet de serre (GES) : C 12



COLDWELL BANKER
EUROPA REALTY



8 rue Lamennais
France, 75008, Paris



TÉL : +33183535353
prestige@coldwellbanker.fr