

Appartement Paris 25 m²



PRIX DE VENTE : 440 000 €

EMAIL : PRESTIGE@COLDWELLBANKER.FR

EXCLUSIVITÉ

DESCRIPTION

Coldwell Banker Paris is pleased to present this fully renovated studio apartment, located on a high floor in the heart of the sought-after Saint-Sulpice district.

From the entrance, you will find a dedicated office area and ample practical storage.

The spacious living room, both warm and comfortable, combines modern finishes with period charm, highlighted by beautiful exposed beams.

The open-plan kitchen is fully fitted and equipped and includes a dining area.

The apartment also features a bright and attractive shower room.

Set within a quiet and secure condominium, this property offers both peace and convenience, with immediate access to shops and public transport, in the historic Saint-Sulpice neighborhood.

There is an option to acquire an additional 25 sqm through the purchase of a second apartment located on the same landing.

Sale price: €395,000 (agency fees payable by the seller)

Annual service charges: €898.36

Number of main lots: 25

Energy rating: C

Estimated annual energy costs: between €420 and €620

“Information regarding the risks to which this property is exposed is available on the Géorisques website: www.georisques.gouv.fr”

CARACTÉRISTIQUES

Type de bien :	Appartement	Surface :	25.27 m ²	Nombre de lots :	25
NB de pièces :	1 room				

Les informations sur les risques auxquels ce bien est exposé sont disponibles sur le site Géorisques : www.georisques.gouv.fr

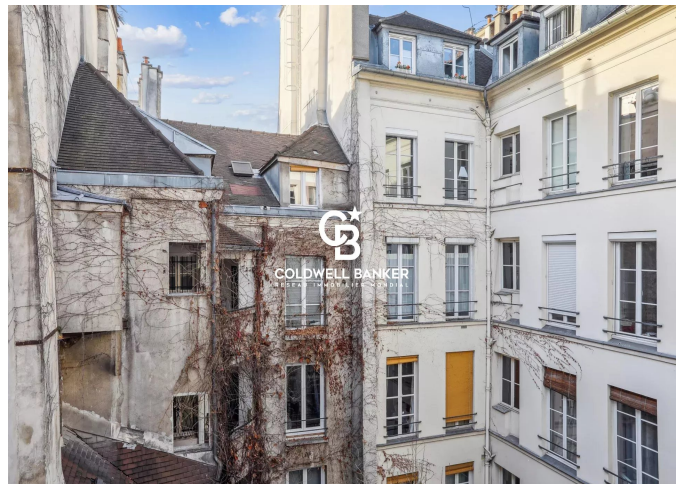
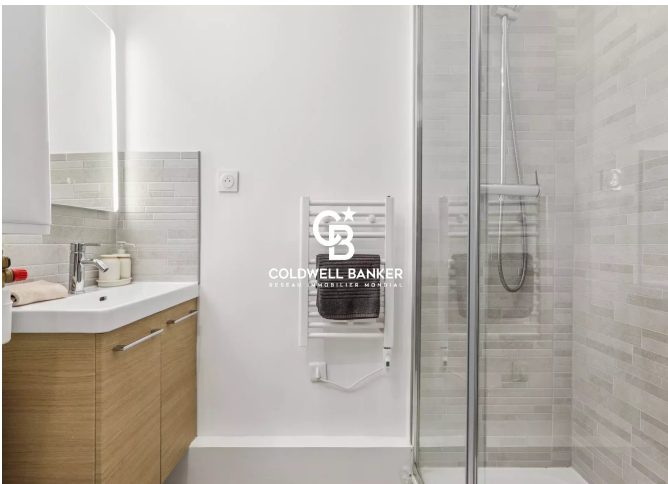
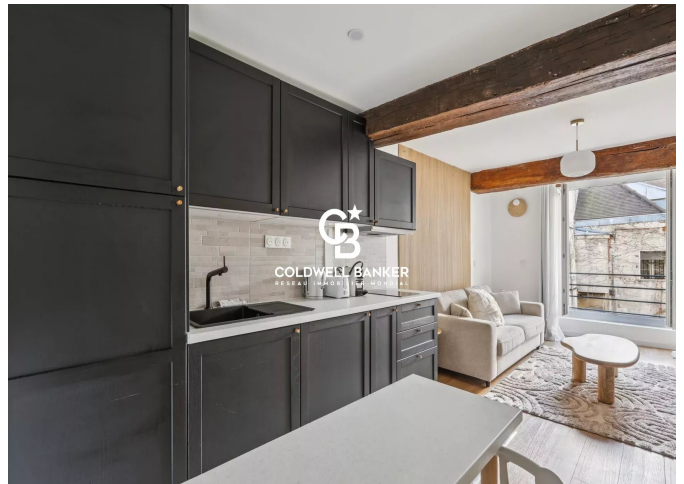
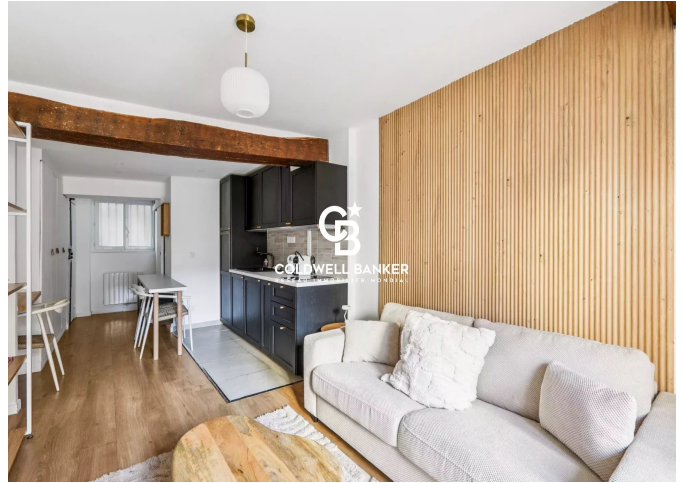
DIAGNOSTIC DE PERFORMANCE ÉNERGÉTIQUE

Diagnostic de performance énergétique (DPE) : C 131

Indice d'émission de gaz à effet de serre (GES) : A 4



COLDWELL BANKER
EUROPA REALTY



8 rue Lamennais
France, 75008, Paris



TÉL : +33183535353
prestige@coldwellbanker.fr