

Appartement Paris 107 m²



PRIX DE VENTE : 3 200 000 €

EMAIL : PRESTIGE@COLDWELLBANKER.FR

DESCRIPTION

Exceptional apartment facing the Eiffel Tower

Exceptional apartment facing the Eiffel Tower

An exceptional pied-à-terre with a direct view of the Eiffel Tower, presented by the worldwide real estate network Coldwell Banker in Paris.

Set in a prestigious stone building facing the Champ-de-Mars, enjoy a true "Parisian postcard" view. A double reception room with an open kitchen and unobstructed views of the Eiffel Tower, a continuous balcony extending the living room, a master suite with shower room and dressing, a second quiet bedroom with its own bathroom, as well as a laundry room and a cellar.

The apartment has been beautifully renovated with noble materials while preserving period features such as a fireplace and herringbone parquet flooring.

A rare opportunity to fully enjoy Parisian life.

Selling price: 3 200 000 euros (fees payable by the vendor)

Average annual charges: 6,008 euros

Co-ownership: 20 main lots

CARACTÉRISTIQUES

Type de bien :	Appartement	Surface :	107.02 m ²	Ascenseur :	Oui
NB de pièces :	4 rooms	NB de chambres :	2 bedrooms		

Les informations sur les risques auxquels ce bien est exposé sont disponibles sur le site Géorisques : www.georisques.gouv.fr

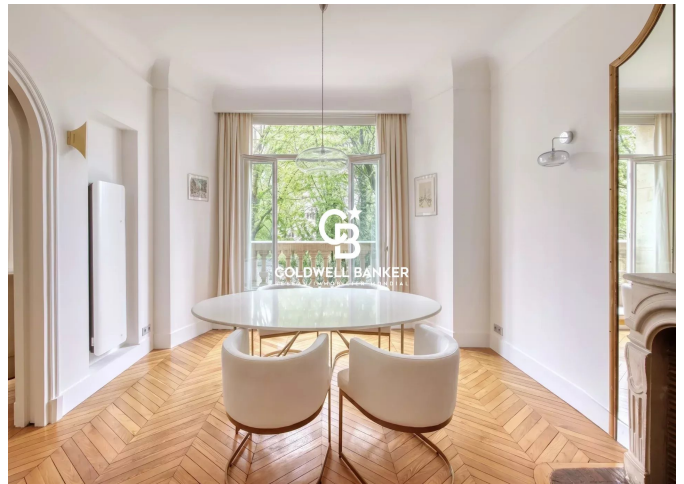
DIAGNOSTIC DE PERFORMANCE ÉNERGÉTIQUE

Diagnostic de performance énergétique (DPE) : E 272

Indice d'émission de gaz à effet de serre (GES) : B 10



COLDWELL BANKER
EUROPA REALTY



8 rue Lamennais
France, 75008, Paris



TÉL : +33183535353
prestige@coldwellbanker.fr