

Appartement Paris 215 m<sup>2</sup>

---



PRIX DE VENTE : 2 750 000 €

---

EMAIL : [PRESTIGE@COLDWELLBANKER.FR](mailto:PRESTIGE@COLDWELLBANKER.FR)

## DESCRIPTION

PARIS 8TH DISTRICT — HAUSSMANNIAN ELEGANCE NEAR THE CHAMPS-ÉLYSÉES

Set within a superb high-end Haussmannian building in the heart of Paris' prestigious 8th arrondissement, this remarkable 215 sqm apartment offers a rare lifestyle opportunity combining Parisian elegance with strong value-enhancement potential.

The building immediately impresses with its outstanding features, including a magnificent carved wooden staircase, period stained-glass windows, refined common areas, and the presence of a concierge.

Currently arranged as office space, the property offers exceptional potential to be transformed back into a prestigious reception apartment, fully showcasing the elegance and nobility of classic Haussmannian architecture.

The apartment benefits from generous volumes, beautiful natural light, and impressive ceiling heights. Its preserved period features — original parquet flooring, marble fireplaces, and decorative moldings — beautifully reflect the character of the property.

Its current layout also offers the possibility of being divided into two separate units, creating an especially attractive opportunity for investors or long-term asset optimization.

A private and prestigious address just a few steps from the iconic Champs-Élysées avenue.

Sale price: €2,750,000 (Agency fees payable by the seller)

Co-ownership: 31 main lots

Estimated annual charges: €10,111

Energy rating (DPE): F

Estimated annual energy costs (approximate): between €11,820 and €16,040 per year.

Information regarding potential risks to which this property is exposed is available on the Géorisques website: [www.georisques.gouv.fr](http://www.georisques.gouv.fr)

## CARACTÉRISTIQUES

Type de bien :	Appartement	Surface :	215.0 m <sup>2</sup>	Ascenseur :	Oui
Nombre de lots :	31	NB de pièces :	7 rooms		

Les informations sur les risques auxquels ce bien est exposé sont disponibles sur le site Géorisques : [www.georisques.gouv.fr](http://www.georisques.gouv.fr)

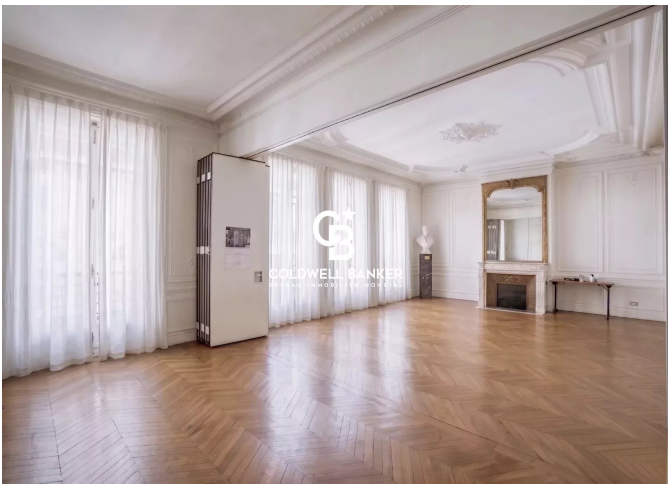
## DIAGNOSTIC DE PERFORMANCE ÉNERGÉTIQUE

Diagnostic de performance énergétique (DPE) : F 243

Indice d'émission de gaz à effet de serre (GES) : F 71



**COLDWELL BANKER**  
**EUROPA REALTY**



8 rue Lamennais  
France, 75008, Paris



TÉL : +33183535353  
[prestige@coldwellbanker.fr](mailto:prestige@coldwellbanker.fr)