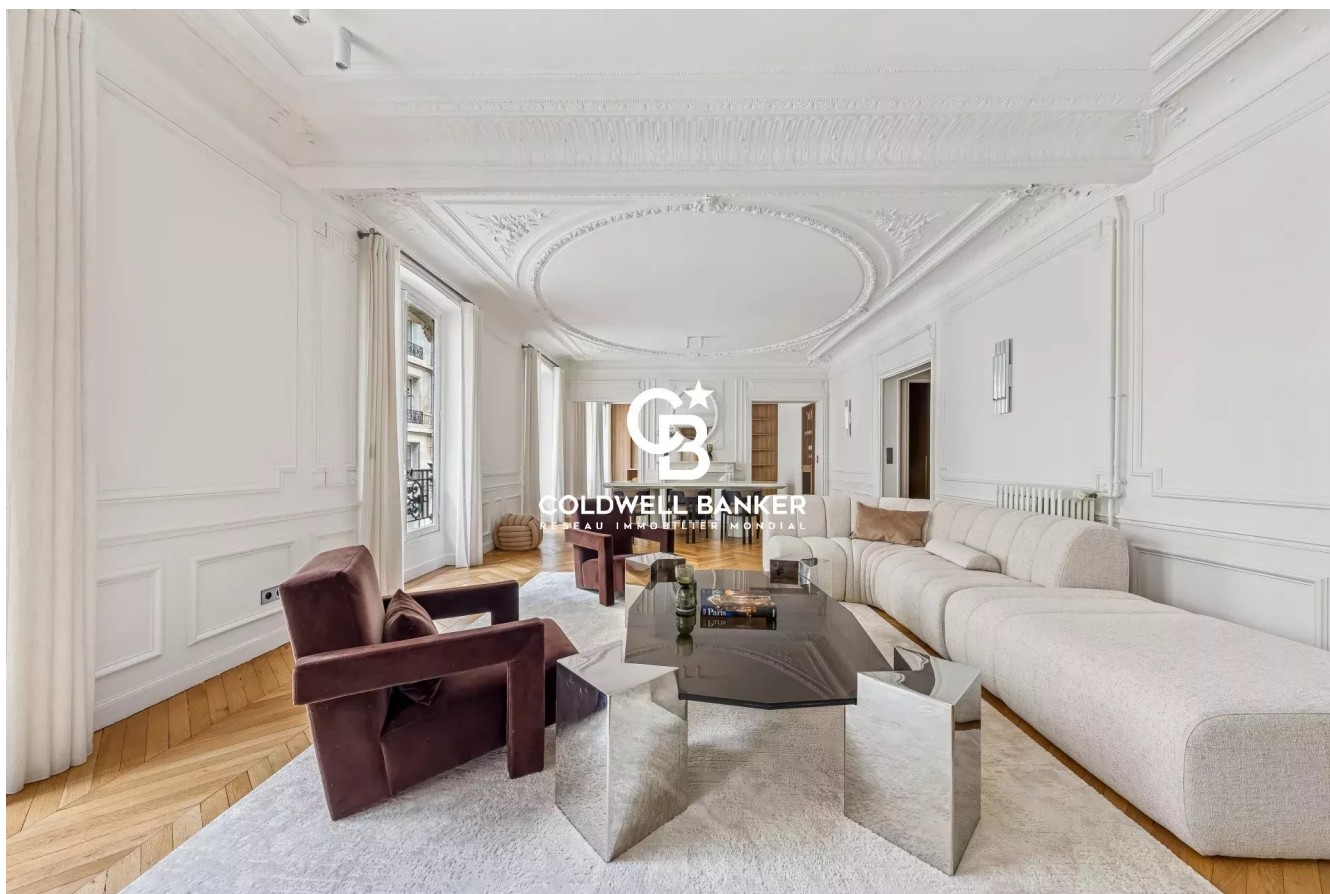


Appartement Paris 225 m²



PRIX DE VENTE : 3 329 000 €

EMAIL : PRESTIGE@COLDWELLBANKER.FR

DESCRIPTION

Located in a prestigious stone building in the heart of the highly sought-after 16th arrondissement, this family and reception apartment, entirely redesigned by an architect, offers remarkable volumes, an elegant layout, and an exceptional quality of life.

From the moment you enter, the apartment impresses with its generous proportions and approximately 3.20-meter-high ceilings, a hallmark of Parisian prestige addresses. The reception area provides an outstanding living and entertaining space, ideal for hosting in a refined yet welcoming atmosphere.

The spacious kitchen meets the highest standards of comfort, perfectly suited for both everyday living and private entertaining.

The night area comprises four bedrooms, including a master suite with its own bathroom and dressing room, designed as a private and intimate retreat. The apartment features three bathrooms, ensuring optimal comfort for all occupants.

Set within an elegant, quiet, and secure residential environment, the property is in immediate proximity to renowned schools, quality shops, and major transport links, making it an ideal address for a discerning family clientele.

Sale price: €3,329,000 (agency fees payable by the seller)

Number of main lots: 55

Annual service charges: €14,680

Energy rating (DPE): D

Estimated annual energy costs: between €4,480 and €6,110

"Information on the risks to which this property is exposed is available on the Géorisques website:

www.georisques.gouv.fr

CARACTÉRISTIQUES

Type de bien :	Appartement	Surface :	225.07 m ²	Ascenseur :	Oui
Taxe foncière :	€4.00	NB de pièces :	6 rooms	NB de chambres :	4 bedrooms

Les informations sur les risques auxquels ce bien est exposé sont disponibles sur le site Géorisques : www.georisques.gouv.fr

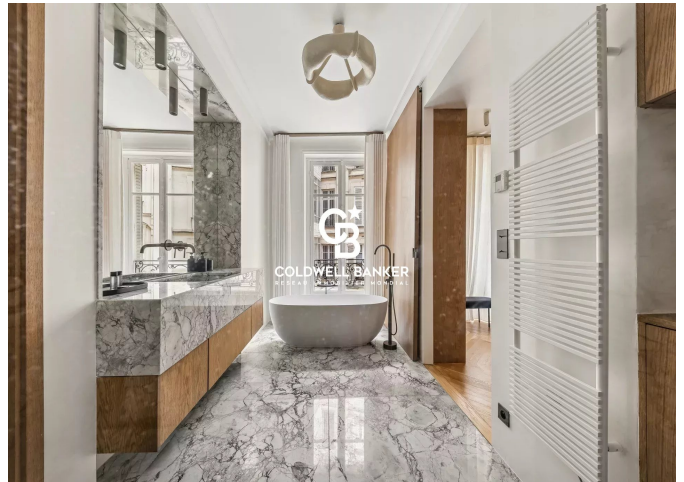
DIAGNOSTIC DE PERFORMANCE ÉNERGÉTIQUE

Diagnostic de performance énergétique (DPE) : D 239

Indice d'émission de gaz à effet de serre (GES) : D 46



COLDWELL BANKER
EUROPA REALTY



8 rue Lamennais
France, 75008, Paris



TÉL : +33183535353
prestige@coldwellbanker.fr