

Appartement Paris 49 m<sup>2</sup>

---



PRIX DE VENTE : 550 000 €

---

EMAIL : [PRESTIGE@COLDWELLBANKER.FR](mailto:PRESTIGE@COLDWELLBANKER.FR)

## DESCRIPTION

Ideally located between Place de l'Étoile, Avenue Hoche, and Avenue Mac-Mahon, on a quiet street, this spacious one-bedroom apartment is set within a well-maintained building.

An ideal property for a first purchase, a pied-à-terre, or an investment.

Bright living room with original parquet flooring, large fully equipped kitchen, quiet bedroom with built-in storage, and a spacious bathroom.

A shared bicycle storage room is available.

A cellar completes this property.

Sale price: €550,000 (fees payable by the seller)

DPE: Class D

Co-ownership: 18 main lots

Average annual charges: €1,922

Annual energy costs: €589 and €682

Information on the risks to which this property is exposed is available on the Géorisques website:  
[www.georisques.gouv.fr](http://www.georisques.gouv.fr)

## CARACTÉRISTIQUES

Type de bien :	Appartement	Surface :	49.4 m <sup>2</sup>	Nombre de lots :	15
Taxe foncière :	€1.00	NB de pièces :	2 rooms		

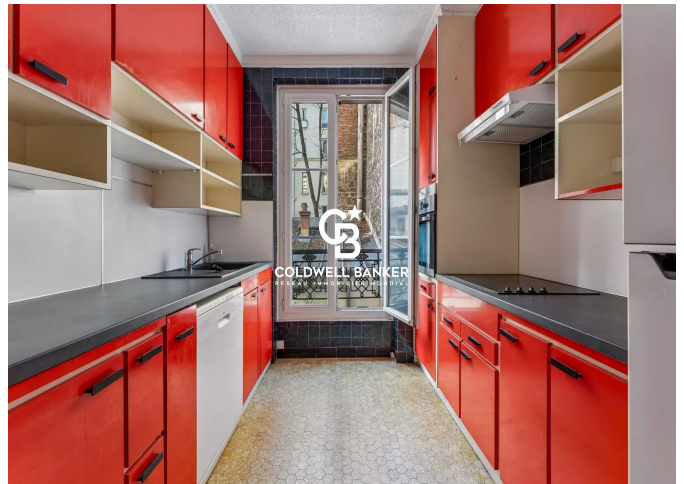
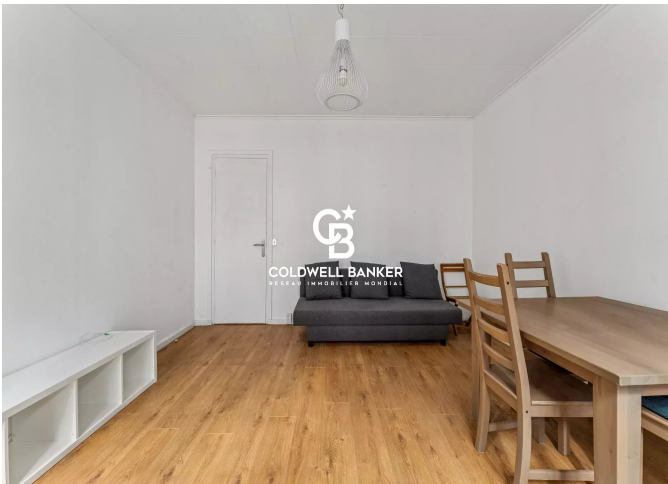
Les informations sur les risques auxquels ce bien est exposé sont disponibles sur le site Géorisques : [www.georisques.gouv.fr](http://www.georisques.gouv.fr)

## DIAGNOSTIC DE PERFORMANCE ÉNERGÉTIQUE

Indice d'émission de gaz à effet de serre (GES) : B 7



**COLDWELL BANKER**  
**EUROPA REALTY**



8 rue Lamennais  
France, 75008, Paris



TÉL : +33183535353  
[prestige@coldwellbanker.fr](mailto:prestige@coldwellbanker.fr)