

Appartement Paris 89 m²



PRIX DE VENTE : 1 100 000 €

EMAIL : WESTLIFE@COLDWELLBANKER.FR

DESCRIPTION

Located in the 20th district of Paris, close to Reunion square, in a quiet street, in a condominium of 4 apartments. This 6 rooms duplex is like a single townhouse which has been designed by an architect. It was originally a shop with a first floor and another floor that has been added. The total living space is around 110 square meters (89,57 square meters according to Carrez regulations). There is also a wonderful terrace garden of 25 square meters with an orientation south east/ north west. This triplex offers on the ground floor a large living space with an open kitchen and two bedrooms. You have to cross the private landscaped garden with trees to enter in the living room.

On the first floor, there are one bedroom, a bathroom including toilets and a laundry.

On the second floor, a little bedroom or office, a bedroom and another bathroom with toilets. In the basement, a cellar of approximately 25 m², with direct access to the living room, can be fitted out.

This particular townhouse will surprise you by its peaceful and sunshine atmosphere. It is such a bucolic and quiet place in Paris vibrant city.

CARACTÉRISTIQUES

| | | | | | |
|----------------|-------------|------------------|----------------------|-----------------|---------|
| Type de bien : | Appartement | Surface : | 89.57 m ² | Taxe foncière : | €759.00 |
| NB de pièces : | 6 rooms | NB de chambres : | 4 bedrooms | | |

Les informations sur les risques auxquels ce bien est exposé sont disponibles sur le site Géorisques : www.georisques.gouv.fr

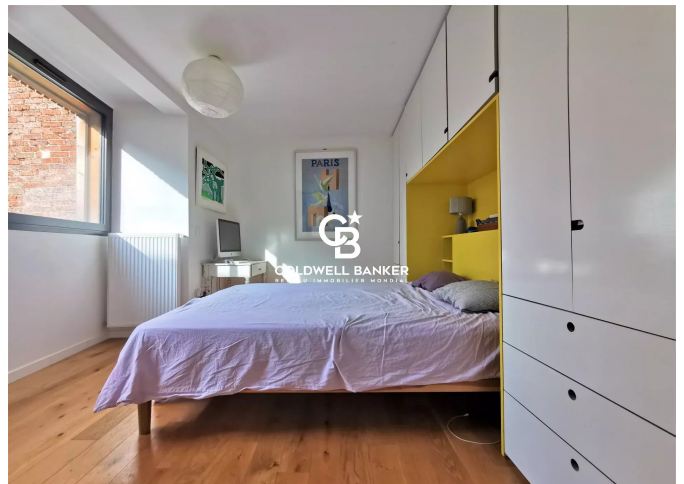
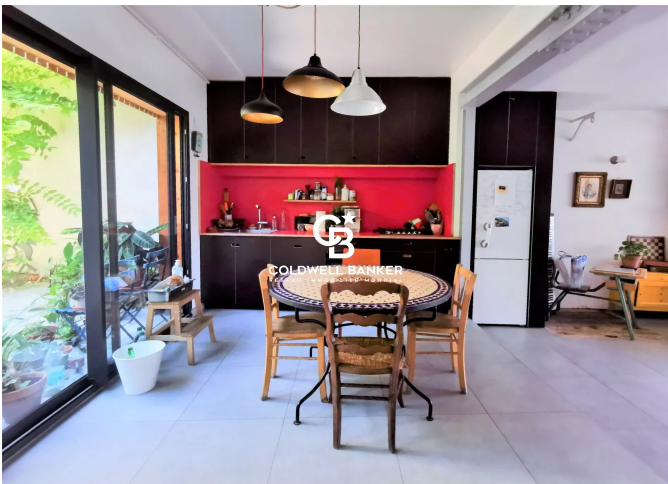
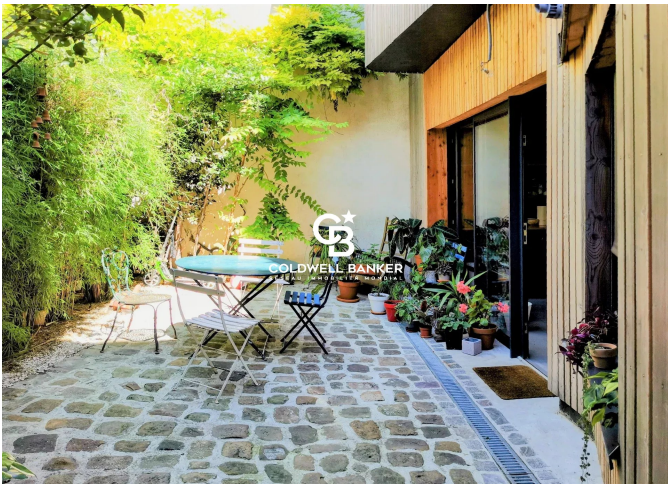
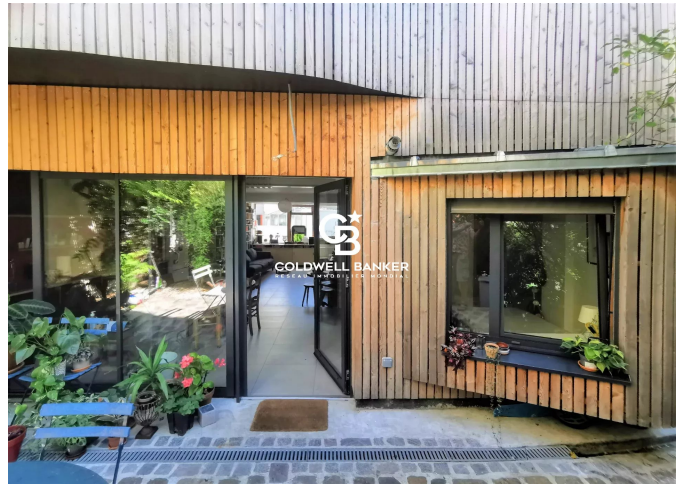
DIAGNOSTIC DE PERFORMANCE ÉNERGÉTIQUE

Diagnostic de performance énergétique (DPE) : D 180

Indice d'émission de gaz à effet de serre (GES) : D 37



COLDWELL BANKER
EUROPA REALTY



12 rue Gabriel Péri
France, 92300, Levallois-Perret



TÉL : +33980771381
westlife@coldwellbanker.fr