

Appartement Paris 94 m<sup>2</sup>

---



SALE PRICE : 920 000 €

---

EMAIL : [CBAI@COLDWELLBANKER.FR](mailto:CBAI@COLDWELLBANKER.FR)

## DESCRIPTION

Ideally located at the foot of the Canal Saint-Martin, discover this beautiful 93 m<sup>2</sup> family apartment. Nestled on the 1st floor, it offers a perfect contrast between the dynamic neighborhood life of the 10th arrondissement and absolute tranquility, thanks to its windows opening directly onto a pleasant tree-lined garden.

### Property Features

Perfectly optimized for a family, the apartment is in very good condition and consists of:

**Flexible Layout:** 4 bedrooms on the original floor plan. Currently configured as 3 bedrooms and a double living room.

**Bathrooms:** 2 shower rooms, ideal for making the family's daily routine easier.

**Living Area:** A beautiful living space as well as a separate kitchen.

### Ideal Location (Transport, Schools, Shops)

The location guarantees an easy daily life and quick access to all of Paris:

**Immediate Proximity to Metros:** Less than a 5-minute walk from Goncourt station (Line 11) and Jacques Bonsergent (Line 5). Place de la République (Lines 3, 5, 8, 9, 11) is only a 7-8 minute walk away, offering unrivaled mobility.

**Schools:** An ideal environment with daycare centers, nursery, and primary schools accessible in under a 5-minute walk. The Grange aux Belles middle school is also just steps away.

**Neighborhood Life:** Local food shops, Saint-Louis Hospital, restaurants, and the famous canal banks right at the foot of the building.

**Peaceful Environment:** A relaxing garden view, protected from the hustle and bustle of the street.

### Additional Amenities

The property is completed by a cellar.

A private parking space in option

A rare property in the area that perfectly combines volume, functionality, and tranquility.

## FEATURES

Property type:	Appartement	Area:	94.0 m <sup>2</sup>	Elevator:	Oui
Property tax:	€610.00	Number of rooms:	5 rooms	Number of bedrooms:	3 bedrooms

Information on the risks to which this property is exposed is available on the Géorisques website: [www.georisques.gouv.fr](http://www.georisques.gouv.fr)

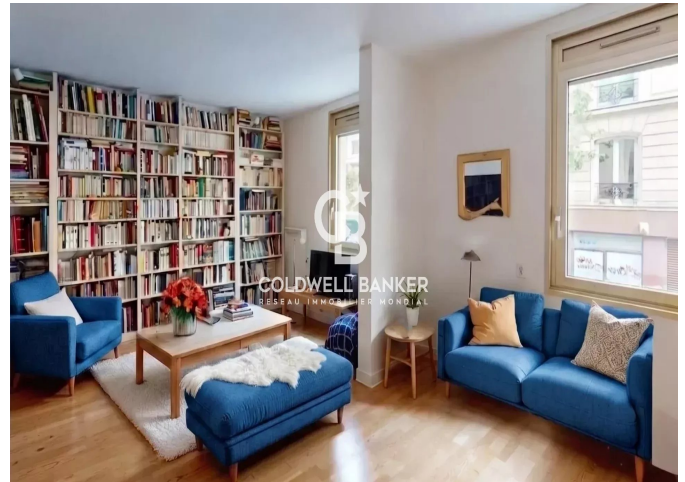
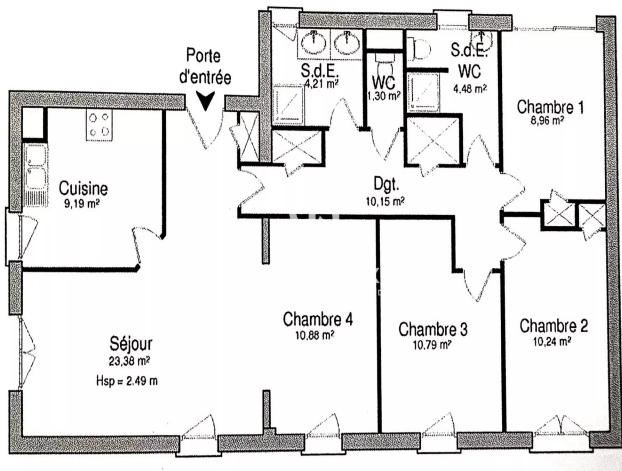
## ENERGY PERFORMANCE DIAGNOSIS

Energy performance diagnosis (EPD): D 199

Greenhouse gas emissions (GHG) index: B 7



**COLDWELL BANKER**  
**EUROPA REALTY**



176 Avenue Charles de Gaulle  
France, 92200, Neuilly-sur-Seine



PHONE : +33147220345  
cbai@coldwellbanker.fr