

Appartement Paris 191 m<sup>2</sup>

---



SALE PRICE : 4 100 000 €

---

EMAIL : [PRESTIGE@COLDWELLBANKER.FR](mailto:PRESTIGE@COLDWELLBANKER.FR)

## DESCRIPTION

An exceptional apartment, fully reimagined by an architect, blending the charm of its historic origins with contemporary elegance and high-end finishes.

Ideally located near the finest schools, boutiques, shops, and restaurants, and just minutes from the Bois de Boulogne, this rare property stands out for its generous spaces, refined atmosphere, and cross-through layout.

The expansive living room, enhanced by magnificent period fireplaces, offers a warm and sophisticated ambiance.

The modern kitchen, both functional and inviting, includes a cozy lounge area perfect for sharing family moments.

Three refined suites, each with its own elegant bathroom, ensure optimal comfort.

The interior design, crafted with great subtlety, combines discreet luxury with timeless style.

A truly privileged living environment, where refinement meets modernity, in one of Paris's most prestigious neighborhoods.

Cellar and concierge.

Selling price: €4,100,000 (fees payable by the seller)

Annual charges: €5,340

Number of mains units in the condominium: 70

EPC: Class D

Annual energy costs between €2,424 and €3,281

"Information on the risks to which this property is exposed is available on the Géorisques website:

[www.georisques.gouv.fr](http://www.georisques.gouv.fr)"

## FEATURES

Property type:	Appartement	Area:	191.7 m <sup>2</sup>	Elevator:	Oui
Number of units:	70	Property tax:	€4.00	Number of rooms:	6 rooms
Number of bedrooms:	3 bedrooms				

Information on the risks to which this property is exposed is available on the Géorisques website: [www.georisques.gouv.fr](http://www.georisques.gouv.fr)

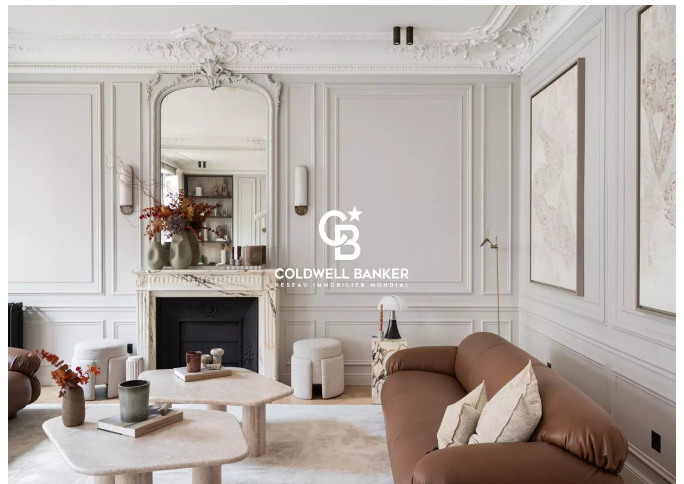
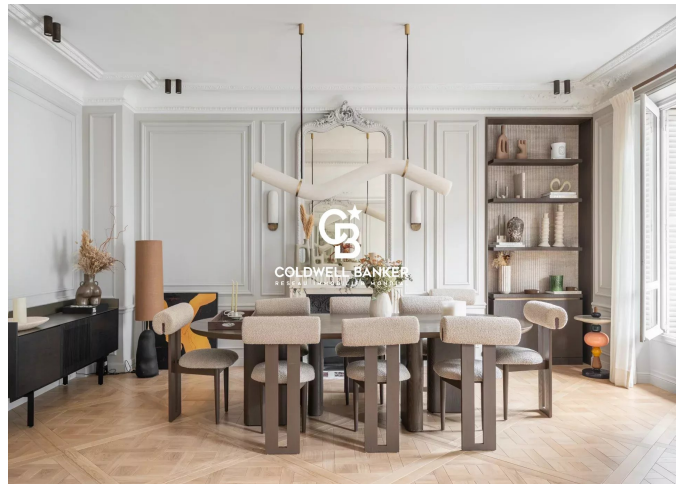
## ENERGY PERFORMANCE DIAGNOSIS

Energy performance diagnosis (EPD): D 199

Greenhouse gas emissions (GHG) index: D 38



**COLDWELL BANKER**  
**EUROPA REALTY**



8 rue Lamennais  
France, 75008, Paris



PHONE : +33183535353  
[prestige@coldwellbanker.fr](mailto:prestige@coldwellbanker.fr)