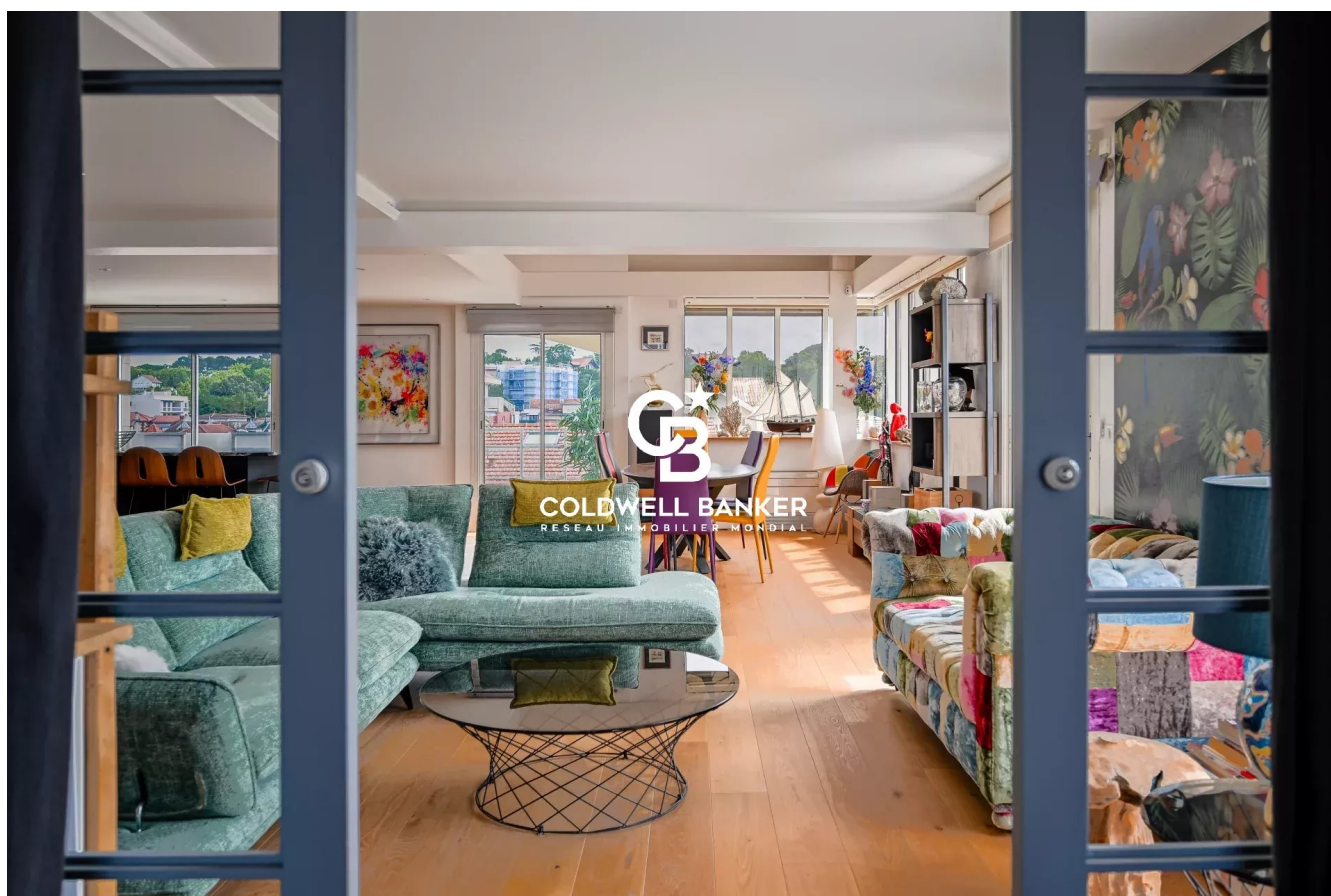


Appartement Arcachon 186 m²



PRIX DE VENTE : 1 680 000 €

EMAIL : IMMOBA@COLDWELLBANKER.FR

DESCRIPTION

In the heart of Arcachon, in one of the town's most sought-after locations, this remarkable dual-aspect apartment spans 186 sqm and occupies the fifth floor of a prestigious, impeccably maintained residence.

Accessible via a private elevator, it offers an exceptional level of comfort and privacy, rarely found in the town centre.

The reception areas feature generous volumes, abundant natural light, and open onto expansive terraces overlooking Arcachon's iconic red-tiled rooftops. An elegant dining room seamlessly extends the living area, creating a refined space for entertaining.

The sleeping quarters comprise four comfortable bedrooms, including two genuine master suites, ensuring both privacy and tranquillity.

Each room enjoys direct access to the terraces and benefits from open views across the town, complemented by a delightful glimpse of Arcachon Bay in the background.

The property forms part of a condominium comprising 12 principal lots. Annual service charges: €3,548. Carrez Law surface area: 186.82 sqm. No legal proceedings currently underway.

Sale price: €1,680,000, including agency fees of €80,000 (5%) payable by the purchaser.

For further information, please contact Anastasiya GRALLIEN, Independent Sales Agent
RSAC No. 881094221 – Professional Liability Insurance No. 127100479.

Energy Performance Certificate (EPC): C (119 kWhEP/sqm/year)

Greenhouse Gas Emissions: A (4 kg CO₂/sqm/year)

Estimated annual energy costs: between €2,040 and €2,820.

Discover all our properties at IMMOBA.

Information regarding potential risks to which this property may be exposed is available upon request or on the Géorisques website: www.georisques.gouv.fr.

CARACTÉRISTIQUES

Type de bien :	Appartement	Surface :	186.83 m ²	Ascenseur :	Oui
NB de chambres :	4 bedrooms				

Les informations sur les risques auxquels ce bien est exposé sont disponibles sur le site Géorisques : www.georisques.gouv.fr

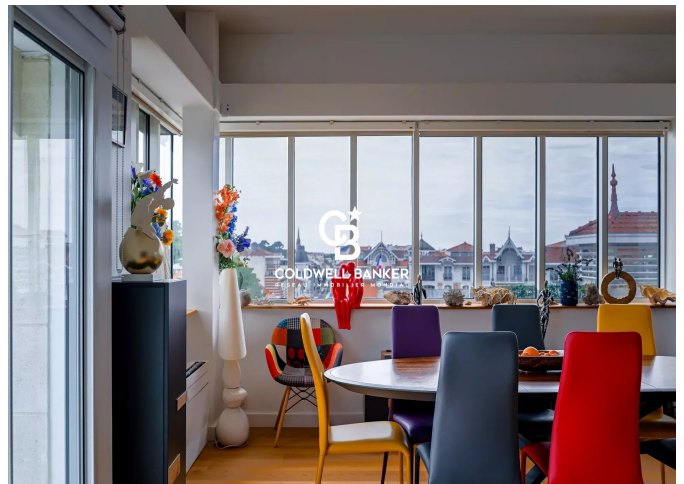
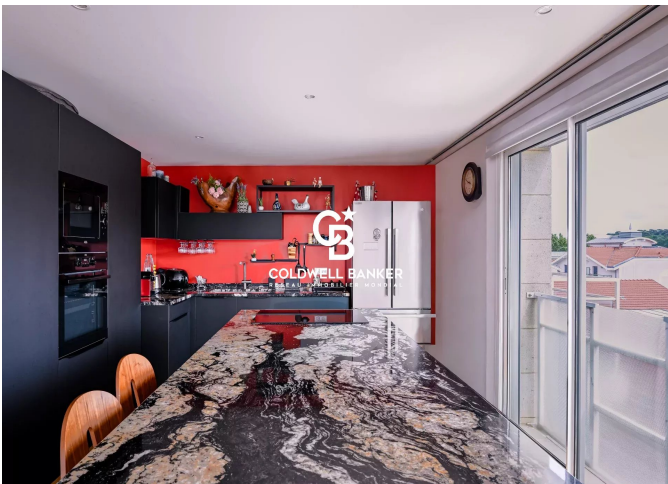
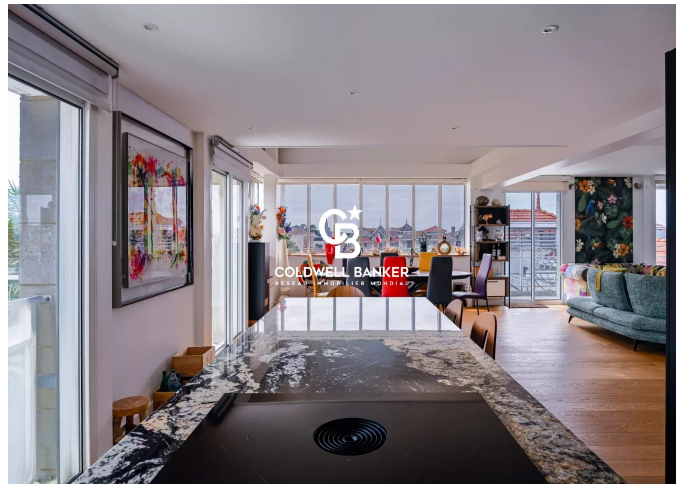
DIAGNOSTIC DE PERFORMANCE ÉNERGÉTIQUE

Diagnostic de performance énergétique (DPE) : C 119

Indice d'émission de gaz à effet de serre (GES) : A 4



COLDWELL BANKER
EUROPA REALTY



281 boulevard de la Côte d'Argent
France, 33120, Arcachon



TÉL : +33557158881
immoba@coldwellbanker.fr