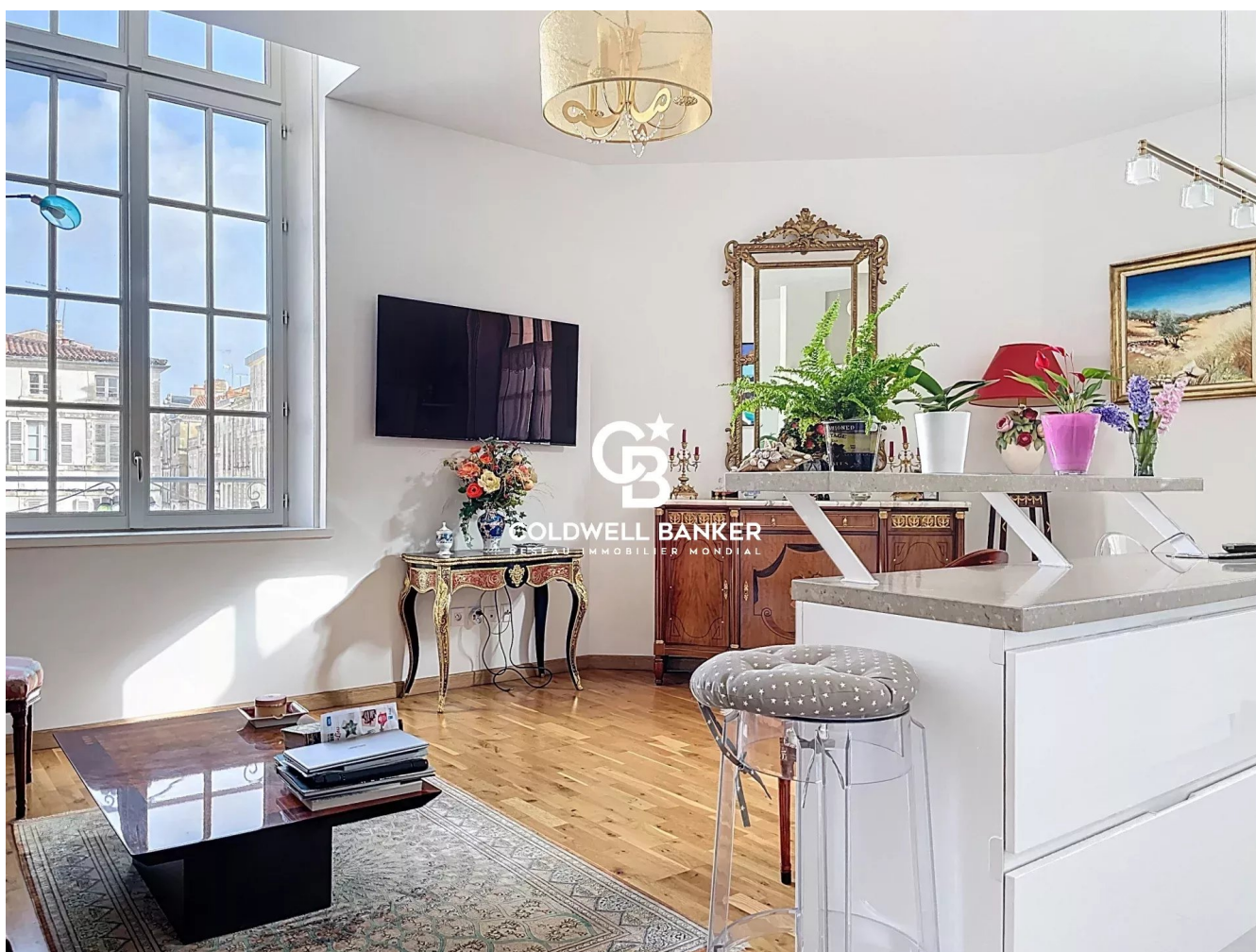


Appartement La Rochelle 65 m²



PRIX DE VENTE : 449 500 €

EMAIL : IMMOBILIERE@COLDWELLBANKER.FR

DESCRIPTION

In the heart of La Rochelle's historic center, this two-bedroom apartment offers a rare living environment, facing La Rochelle's iconic City Hall, the oldest still in use in France. Every day, the panoramic view of this historic monument reminds you of the privilege of living in a unique place.

Located in a residence with an elevator, the apartment opens onto an entrance hall leading to a light-filled living room with an open kitchen. The high ceilings enhance the feeling of space and highlight the charm of the place.

Two bedrooms with closets offer comfort and functionality, complemented by a neat bathroom.

A high-quality, bright property where you can immediately feel the soul of the city center and the gentle lifestyle of La Rochelle.

Annual condominium fees: €1,984.

Condominium with 93 units, including 56 residential units.

Risk information available on the Géorisques website: www.georisques.gouv.fr.

CARACTÉRISTIQUES

Type de bien :	Appartement	Surface :	65.52 m ²	Ascenseur :	Oui
Nombre de lots :	56	Taxe foncière :	€1.00	NB de pièces :	3 rooms
NB de chambres :	2 bedrooms				

Les informations sur les risques auxquels ce bien est exposé sont disponibles sur le site Géorisques : www.georisques.gouv.fr

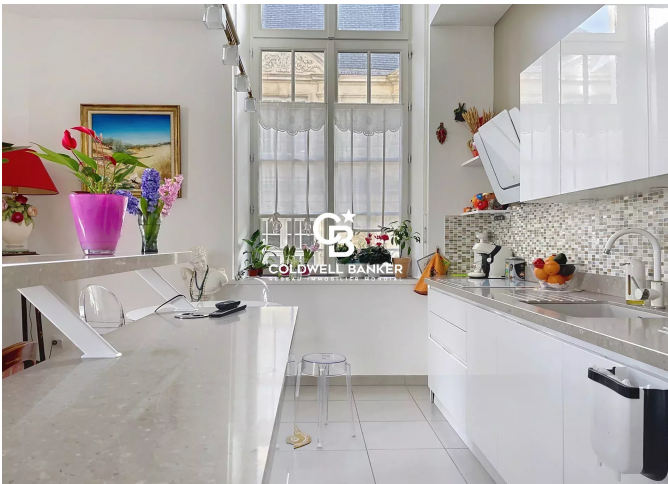
DIAGNOSTIC DE PERFORMANCE ÉNERGÉTIQUE

Diagnostic de performance énergétique (DPE) : C 136

Indice d'émission de gaz à effet de serre (GES) : B 9



COLDWELL BANKER
EUROPA REALTY



7 Rue Pas du Minage
France, 17000, La Rochelle



TÉL : +33586580078
immobiliere@coldwellbanker.fr