

Appartement Perpignan 85 m²



PRIX DE VENTE : 420 000 €

EMAIL : MUSTPERPIGNAN@COLDWELLBANKER.FR

DESCRIPTION

A unique apartment awaits you on the sixth floor of a building with an elevator, located on Cours Palmarole. The only residence on its landing, it offers a rare privilege in the heart of Perpignan's city center. Entirely renovated and enhanced by refined décor with flawless finishes, it combines elegance with high-end features where every detail matters. From the entrance, the marble flooring—extending seamlessly from the interiors to the exteriors and also adorning both shower rooms—sets the tone for exceptionality.

The spacious living room, open to a sleekly designed fitted kitchen, creates a light-filled living area that continues onto a large terrace with breathtaking views of the city. A suite and an additional bedroom complete the layout, while custom-built storage adds the finishing touch to a space redesigned down to the smallest detail. Ducted air conditioning, recessed sliding doors, and electric blinds further elevate the comfort of this luxurious property. A cellar and a parking space complete this exclusive address.

Information about the risks to which this property is exposed is available on the Géorisques website:
www.georisques.gouv.fr

CARACTÉRISTIQUES

Type de bien :	Appartement	Surface :	85.1 m ²	Ascenseur :	Oui
Taxe foncière :	€1.00	NB de pièces :	3 rooms	NB de chambres :	2 bedrooms

Les informations sur les risques auxquels ce bien est exposé sont disponibles sur le site Géorisques : www.georisques.gouv.fr

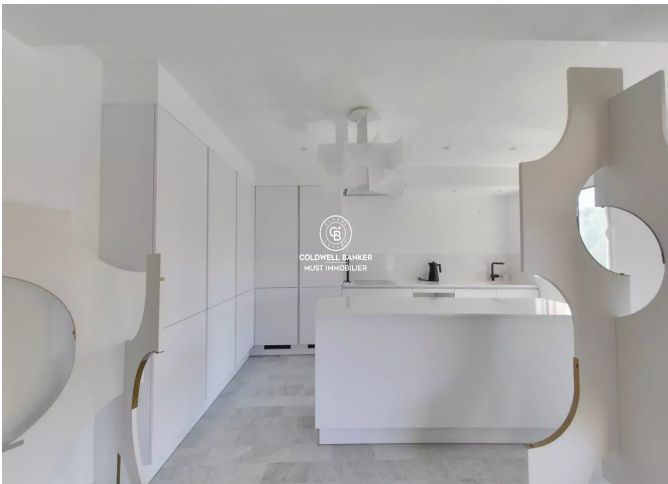
DIAGNOSTIC DE PERFORMANCE ÉNERGÉTIQUE

Diagnostic de performance énergétique (DPE) : C 162

Indice d'émission de gaz à effet de serre (GES) : A 5



COLDWELL BANKER
EUROPA REALTY



45, avenue du Général Leclerc
France, 66000, Perpignan



TÉL : +33468514343
mustperpignan@coldwellbanker.fr