

Appartement Fréjus 134 m²



PRIX DE VENTE : 525 000 €

EMAIL : ESTERELREALTY.SAINTRAPHAEL@COLDWELLBANKER.FR

DESCRIPTION

Architect-designed apartment nestled in the heart of the prestigious former Grand Hôtel de Valescure, this elegant 134 m² two-bedroom residence (F3-type), located on the third floor with elevator access, captivates with its modernist architecture enhanced by the Art Deco spirit emblematic of the Riviera from the 1930s to 1950s.

Bathed in natural light through large openings overlooking the surrounding greenery, it reveals magnificent volumes, soaring ceilings, and an atmosphere that is both refined and welcoming – blending the timeless elegance of its period style with the comfort of contemporary living.

The spacious and convivial reception area opens onto a hallway leading to a stylish, fully equipped kitchen, two bedrooms offering absolute comfort, a refined bathroom, and separate toilets. Balconies with panoramic views, a private garage, a maid's room, and a cellar complete this exceptional property.

Set in a peaceful and lush environment, just moments from golf courses and local amenities, this iconic and secure residence with caretaker perfectly embodies the charm and serenity of the Côte d'Azur lifestyle – where prestige, history, and the art of living meet.

Vanessa - Williams - Global Luxury Brand Spécialist Coldwell Banker

☎ +33 06 72 85 21 09 - +33 06 82 82 25 39

✉ williams.aureille@coldwellbanker.fr - vanessa.soares@coldwellbanker.fr

CARACTÉRISTIQUES

Type de bien :	Appartement	Surface :	134.0 m ²	NB de pièces :	3 rooms
NB de chambres :	2 bedrooms				

Les informations sur les risques auxquels ce bien est exposé sont disponibles sur le site Géorisques : www.georisques.gouv.fr

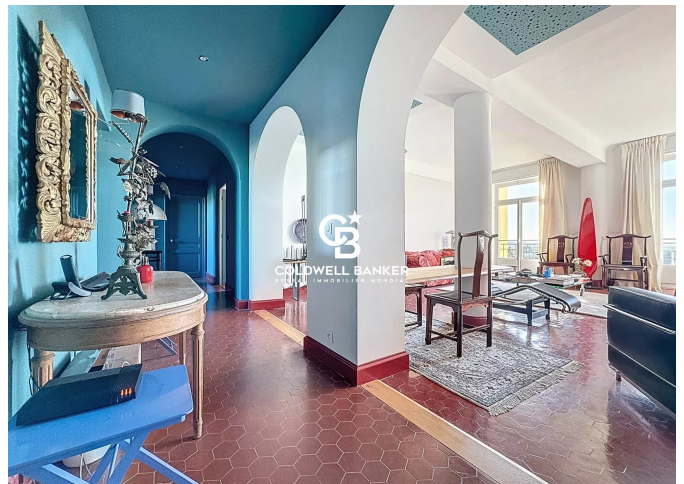
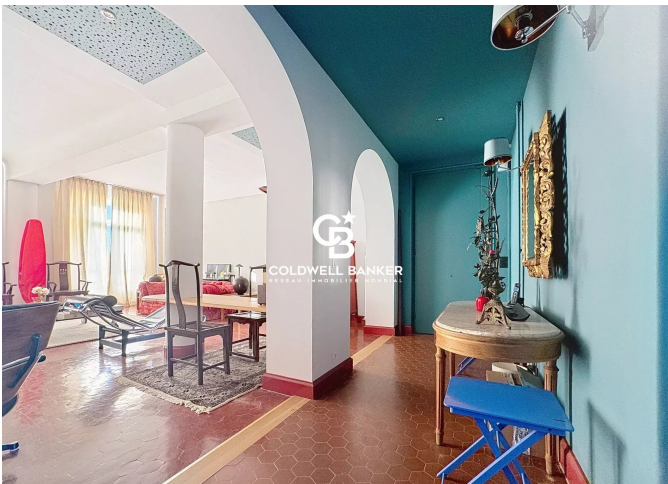
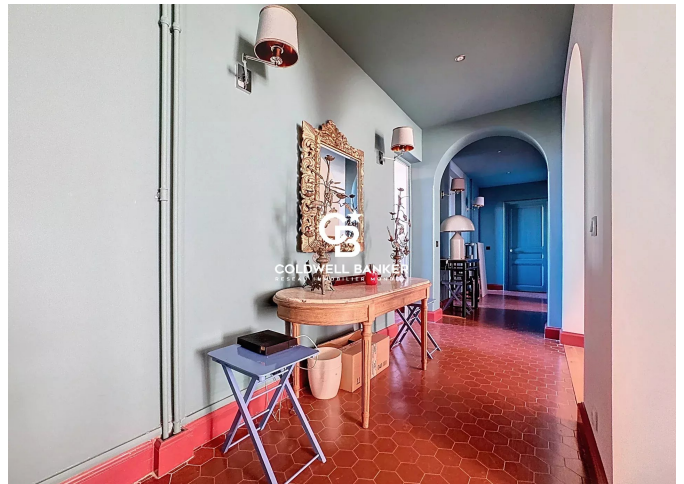
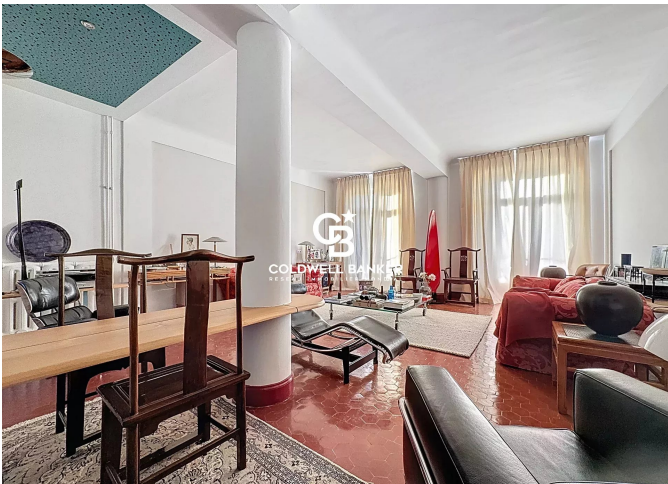
DIAGNOSTIC DE PERFORMANCE ÉNERGÉTIQUE

Diagnostic de performance énergétique (DPE) : C 119

Indice d'émission de gaz à effet de serre (GES) : C 17



COLDWELL BANKER
EUROPA REALTY



44 Avenue du Général Leclerc
France, 83700, Saint-Raphaël



TÉL : +33494193440
esterelrealty.saintraphael@coldwellb

