

Appartement Saint-Raphaël 83 m²



PRIX DE VENTE : 539 000 €

EMAIL : ESTERELREALTY.SAINTRAPHAEL@COLDWELLBANKER.FR

DESCRIPTION

Valescure – 2-Bedroom Apartment in a Prestigious Residence with Pool

Located in Saint-Raphaël, in the highly sought-after area of Valescure, within a prestigious residence featuring a swimming pool, nestled in a quiet cul-de-sac offering absolute peace and tranquility.

Coldwell Banker Esterel Realty is pleased to present this beautiful 2-bedroom apartment (3 rooms) of 83 sqm, situated on the 1st floor, offering a serene lifestyle combining elegance and nature.

The apartment features a bright and spacious 40 sqm living area with an open-plan kitchen, facing southwest, two bedrooms including a master suite with its own bathroom, a separate shower room.

A large 15 sqm terrace with no overlooking neighbors allows you to fully enjoy sunny days in complete privacy.

Additional features include:

One garage

Elevator access

Ideally located just 10 minutes by car from the Golf shopping center, this property perfectly combines convenience with a green and peaceful environment.

Contact your commercial agent:

Clémentine Pignol : +33 (0)6 26 34 67 21

CARACTÉRISTIQUES

Type de bien :	Appartement	Surface :	83.4 m ²	Ascenseur :	Oui
Nombre de lots :	28	Taxe foncière :	€1.00	NB de pièces :	3 rooms
NB de chambres :	2 bedrooms				

Les informations sur les risques auxquels ce bien est exposé sont disponibles sur le site Géorisques : www.georisques.gouv.fr

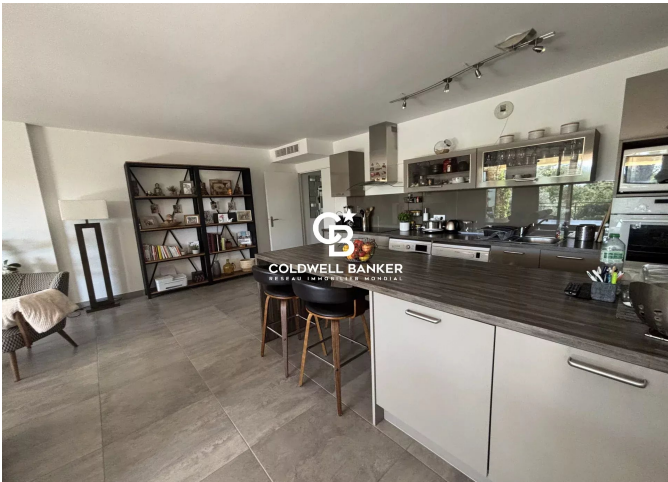
DIAGNOSTIC DE PERFORMANCE ÉNERGÉTIQUE

Diagnostic de performance énergétique (DPE) : A 60

Indice d'émission de gaz à effet de serre (GES) : A 2



COLDWELL BANKER
EUROPA REALTY



44 Avenue du Général Leclerc
France, 83700, Saint-Raphaël



TÉL : +33494193440
esterealty.saintraphael@coldwellb

