

Appartement Théoule-sur-Mer 178 m<sup>2</sup>

---



PRIX DE VENTE : 2 750 000 €

---

EMAIL : [STANDINGREALTY@COLDWELLBANKER.FR](mailto:STANDINGREALTY@COLDWELLBANKER.FR)

## DESCRIPTION

In a renowned and secure domain, luxurious flat of about 175m2 offering from all the rooms and the terrace a magnificent panoramic view on the sea, the Lerins islands and the bay of Cannes. This flat has been completely renovated and offers a large living room with a fully equipped open kitchen, a large master bedroom with bathroom/shower, a dressing room and two bedrooms with two bathrooms. Outside, this property has a beautiful terrace.

Unique panorama on the sea and the Pierre Cardin Bubble Palace.

A double garage and a cellar complete this exceptional property.

## CARACTÉRISTIQUES

Type de bien :	Appartement	Surface :	178.58 m <sup>2</sup>	Taxe foncière :	€1.00
NB de pièces :	4 rooms	NB de chambres :	3 bedrooms		

Les informations sur les risques auxquels ce bien est exposé sont disponibles sur le site Géorisques : [www.georisques.gouv.fr](http://www.georisques.gouv.fr)

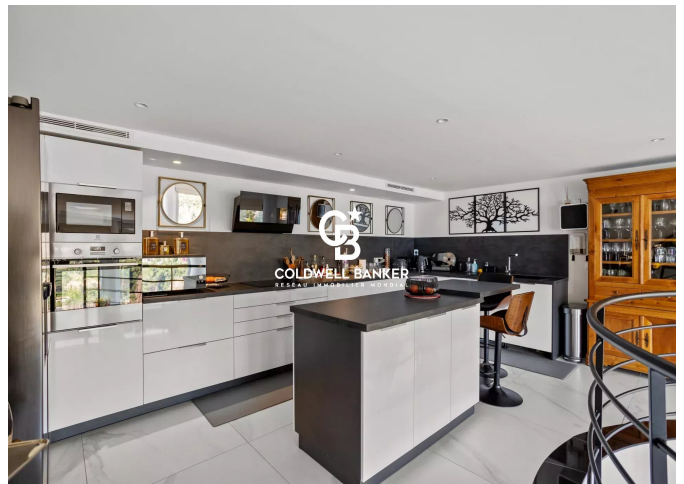
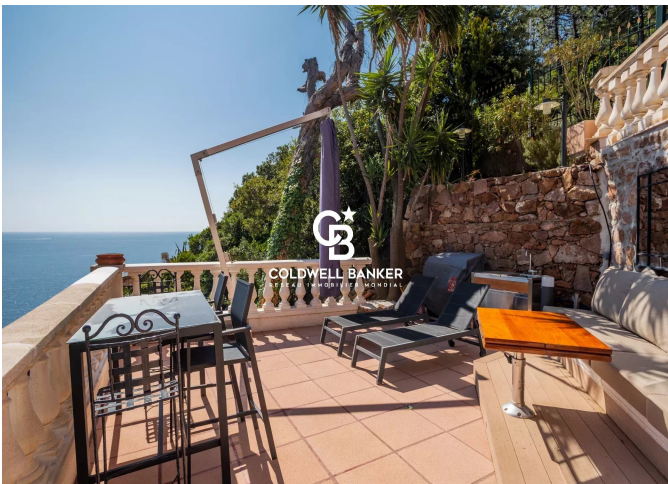
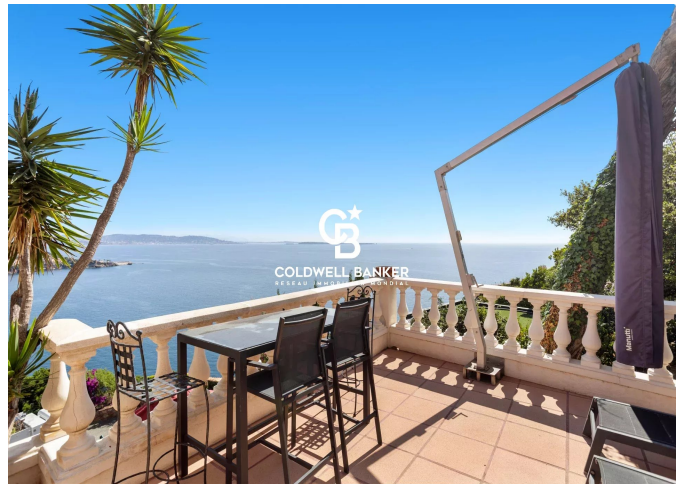
## DIAGNOSTIC DE PERFORMANCE ÉNERGÉTIQUE

Diagnostic de performance énergétique (DPE) : A 69

Indice d'émission de gaz à effet de serre (GES) : A 2



**COLDWELL BANKER**  
**EUROPA REALTY**



11 rue Chauvain  
France, 06000, Nice



TÉL : +33493852932  
[standingrealty@coldwellbanker.fr](mailto:standingrealty@coldwellbanker.fr)