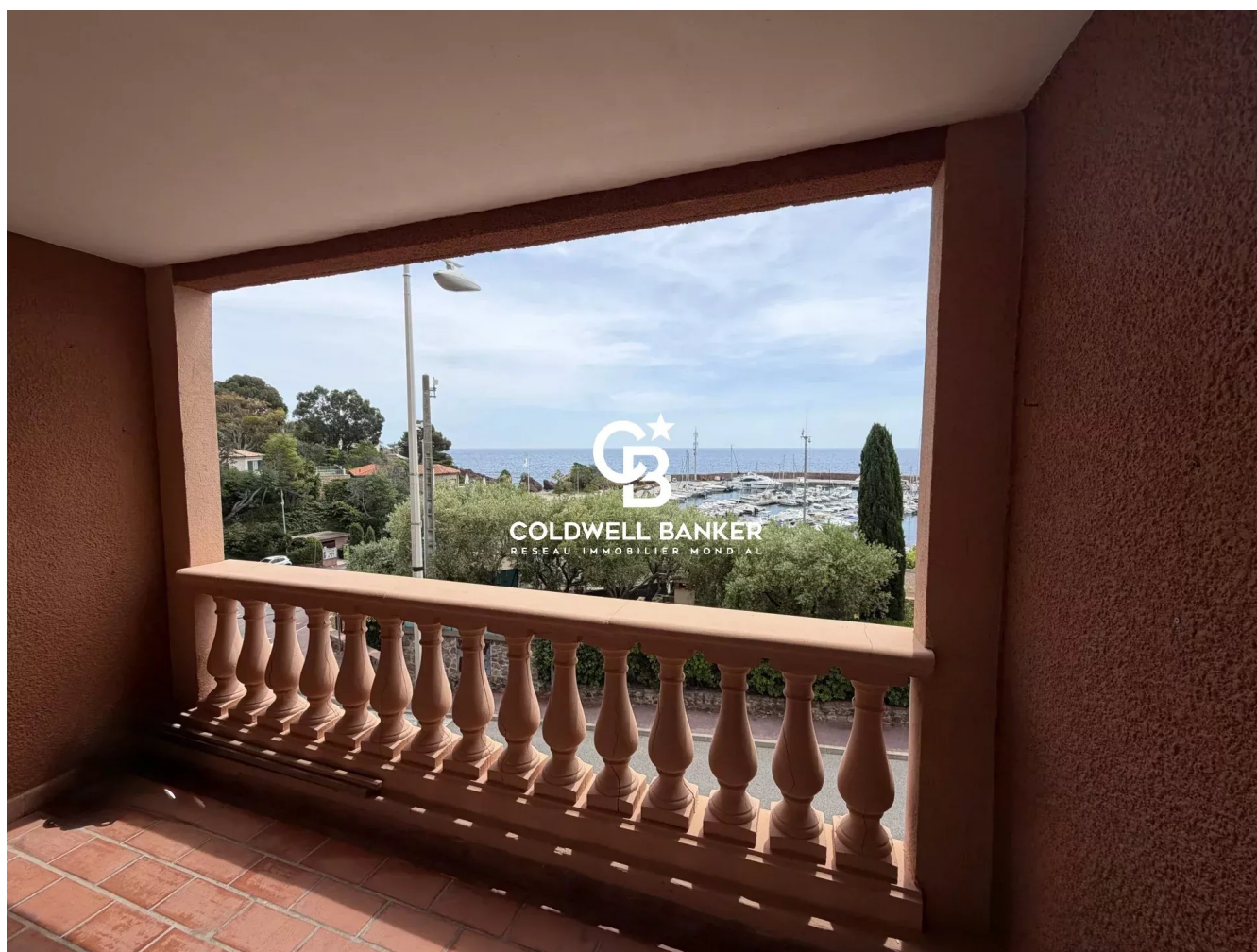


Appartement Théoule-sur-Mer 37 m²



PRIX DE VENTE : 350 000 €

EMAIL : STANDINGREALTY@COLDWELLBANKER.FR

EXCLUSIVITÉ

DESCRIPTION

Nestled in one of the most sought-after locations in Théoule-sur-Mer, between the Mediterranean Sea and the stunning Esterel hills, this beautiful 37 m² one-bedroom apartment offers breathtaking panoramic sea views and an exceptional lifestyle on the French Riviera.

Bathed in natural light thanks to its south-east exposure, the property features a bright living area opening onto a spacious 9 m² terrace, the perfect setting for enjoying spectacular sunrises, al fresco dining, and uninterrupted views of the Mediterranean.

The apartment comprises a comfortable living room, a functional kitchen, a peaceful bedroom, and a well-appointed bathroom. Every space has been designed to maximize comfort while showcasing the outstanding coastal scenery.

Set within a well-maintained residence with a swimming pool, this property offers a rare opportunity to own a charming retreat in an idyllic environment, just minutes from beaches, the marina, restaurants, and local amenities.

Key Features:

- Stunning panoramic sea views
- 37 m² one-bedroom apartment
- Spacious 9 m² terrace
- South-east exposure
- Residence with swimming pool
- Quiet and highly desirable location
- Close to beaches, marina, and shops
- Ideal holiday home, investment property, or pied-à-terre on the French Riviera

A rare opportunity to acquire a delightful Mediterranean getaway in one of the Riviera's most exclusive coastal destinations.

For further information or to arrange a private viewing, please contact us.

CARACTÉRISTIQUES

Type de bien :	Appartement	Surface :	37.31 m ²	Ascenseur :	Oui
Taxe foncière :	€543.00	NB de pièces :	2 rooms	NB de chambres :	1 bedroom

Les informations sur les risques auxquels ce bien est exposé sont disponibles sur le site Géorisques : www.georisques.gouv.fr

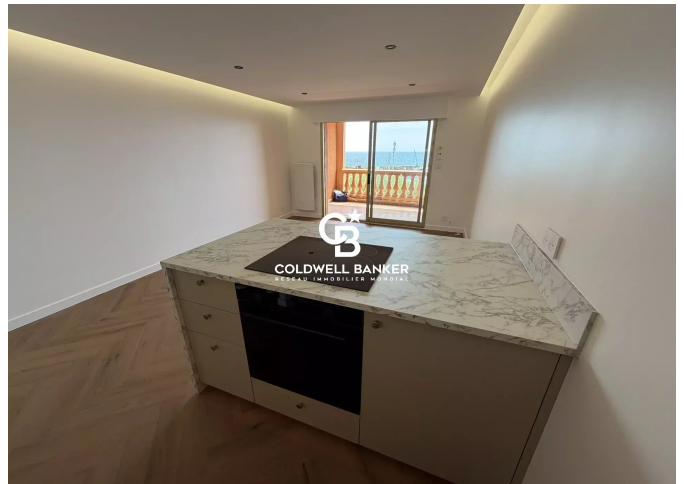
DIAGNOSTIC DE PERFORMANCE ÉNERGÉTIQUE

Diagnostic de performance énergétique (DPE) : D 249

Indice d'émission de gaz à effet de serre (GES) : B 7



COLDWELL BANKER
EUROPA REALTY



11 rue Chauvain
France, 06000, Nice



TÉL : +33493852932
standingrealty@coldwellbanker.fr