

Appartement Villeneuve-Loubet 125 m²



PRIX DE VENTE : 2 390 000 €

EMAIL : ARTREALTY@COLDWELLBANKER.FR

DESCRIPTION

Located in an iconic residence listed as 20th-century heritage. we are delighted to present this exceptional apartment for sale. Covering approximately 125 sqm. it has been fully renovated and offers a waterfront location on a high floor. with a living area of about 125 sqm and an additional 180 sqm of terrace space. enhanced by a pool and spa.

This prestigious property is composed as follows:

An entrance hall. a spacious living room. a kitchen. 3 bedrooms. 2 bathrooms with toilets. a guest toilet. and a large terrace.

A cellar and a closed garage are also included with this property.

Price includes agency fees. payable by the seller.

CARACTÉRISTIQUES

Type de bien :	Appartement	Surface :	125.0 m ²	Ascenseur :	Oui
NB de pièces :	4 rooms	NB de chambres :	3 bedrooms		

Les informations sur les risques auxquels ce bien est exposé sont disponibles sur le site Géorisques : www.georisques.gouv.fr

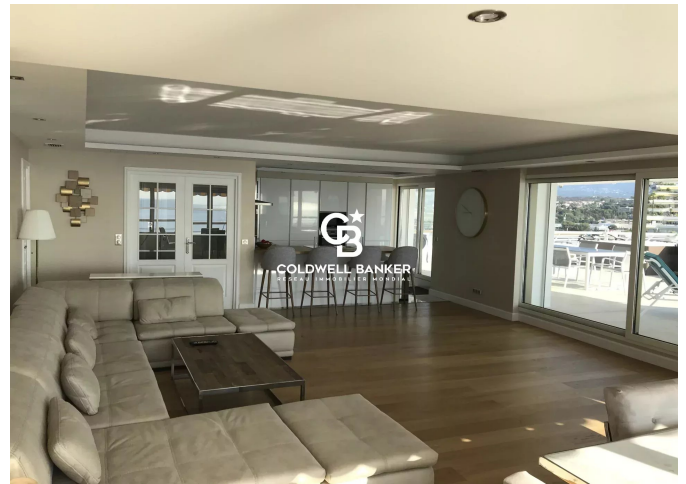
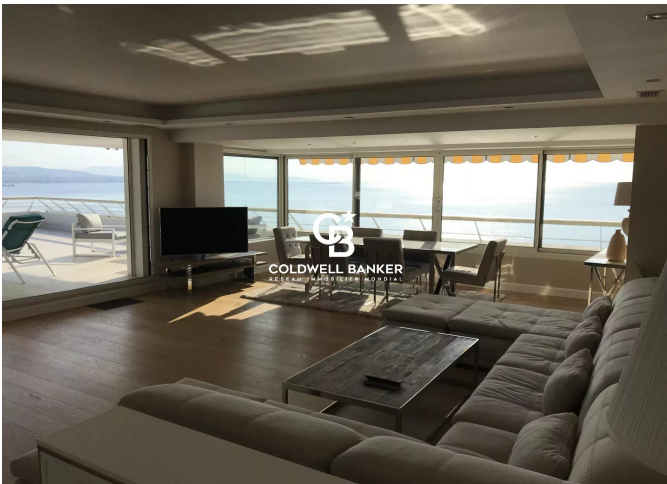
DIAGNOSTIC DE PERFORMANCE ÉNERGÉTIQUE

Diagnostic de performance énergétique (DPE) : In progress -2

Indice d'émission de gaz à effet de serre (GES) : In progress -2



COLDWELL BANKER
EUROPA REALTY



777 Route de la Colle
France, 06570, Saint-Paul-de-Vence



TÉL : +33489973340
artrealty@coldwellbanker.fr