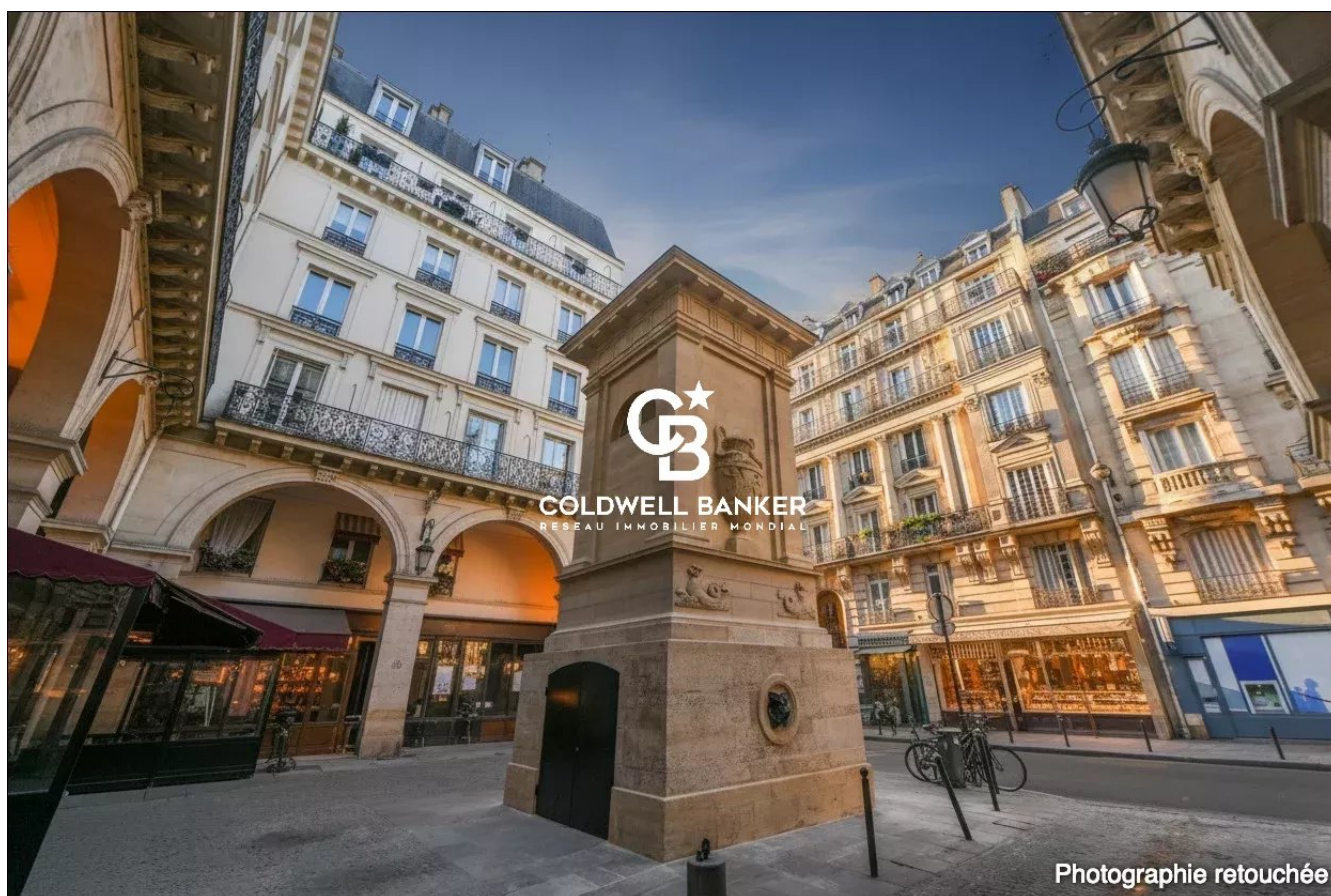


Bureau Paris



PRIX DE VENTE : 954 000 €

EMAIL : PRESTIGE@COLDWELLBANKER.FR

DESCRIPTION

Rare in the neighborhood! In the heart of Gros-Caillou, this commercial space offers generous volumes across two levels.

On the ground floor, it features a beautiful room of approximately 40 m², with an entrance equipped with a display window.

In the basement, a space of approximately 60 m² includes a meeting room, an office, and a large area currently used as an archive room.

All activities are possible, except for catering.

Selling price: €895,000 (fees payable by the vendor)

Number of main lots in co-ownership : 20

Annual service charges: €3,724.00

Energy class : D

"Information on the risks to which this property is exposed is available on the Géorisques website: www.georisques.gouv.fr "

CARACTÉRISTIQUES

Type de bien :	Bureau	Ascenseur :	Oui	Nombre de lots :	20
NB de pièces :	6 rooms				

Les informations sur les risques auxquels ce bien est exposé sont disponibles sur le site Géorisques : www.georisques.gouv.fr

DIAGNOSTIC DE PERFORMANCE ÉNERGÉTIQUE

Diagnostic de performance énergétique (DPE) : D 238

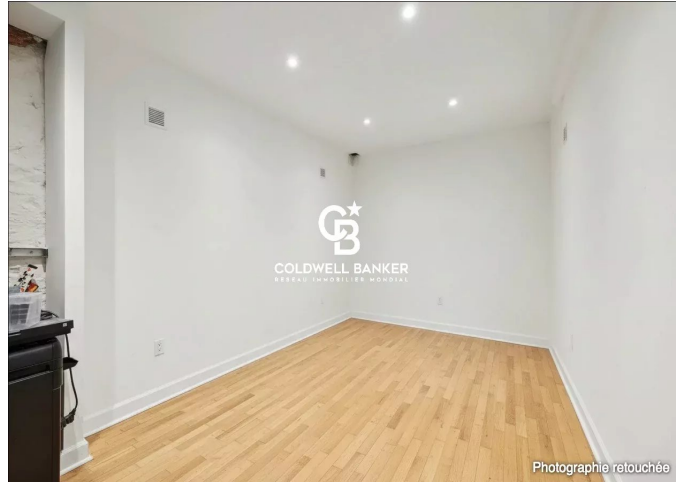
Indice d'émission de gaz à effet de serre (GES) : B 6



COLDWELL BANKER
EUROPA REALTY



Photographie retouchée



Photographie retouchée



Photographie retouchée



Photographie retouchée



Photographie retouchée



8 rue Lamennais
France, 75008, Paris



TÉL : +33183535353
prestige@coldwellbanker.fr