

Maison Passy 1 m²



PRIX DE VENTE : 3 500 000 €

EMAIL : LIMO@COLDWELLBANKER.FR

DESCRIPTION

Nestled in the heart of the charming town of Passy, this unique real estate complex presents a rare opportunity to acquire an exceptional property combining authenticity and modernity. Located on a flat and wooded plot of approximately 3000 m², this property consists of several remarkable buildings.

Renovated Farmhouse of 791 m²:

Comprising 8 elegantly designed apartments.

Warm welcome.

Fully equipped kitchen.

Laundry room.

Friendly dining room.

Convertible attic offering additional potential.

The Forge:

Ground floor with a spacious room with disabled toilet facilities (formerly a restaurant).

Kitchen and dishwashing area (Possibility to equip it for professional use).

Cellar.

Upstairs, a sumptuous duplex apartment T4 of 200 m².

Large en-suite bedroom.

Huge living room with a breathtaking view of a magnificent artisanal framework.

Independent Chalet:

Complete basement with a double garage and toilet (possibility of conversion).

Two en-suite bedrooms upstairs.

Beautiful terrace offering a panoramic view.

Authentic High Savoyard Shelter:

Area of 135 m².

Large multipurpose hall.

Welcoming bar.

Two toilets.

This exceptional property offers a perfect harmony between modernity and traditional Savoyard charm. Each building has been carefully restored and furnished with quality materials, providing a unique living environment. The flat and wooded outdoor spaces add a touch of tranquility to this remarkable real estate complex. Parking is possible in 2 parking areas.

Do not miss the opportunity to become the owner of this real estate gem in Passy. Contact us today to arrange a visit and discover the luxury and comfort of this exceptional property.

CARACTÉRISTIQUES

Type de bien : Maison Surface : 1228.0 m² NB de pièces : 30 rooms

Les informations sur les risques auxquels ce bien est exposé sont disponibles sur le site Géorisques : www.georisques.gouv.fr

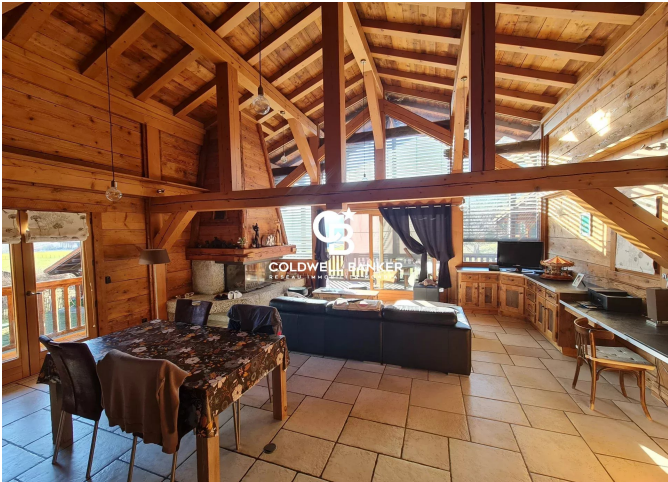
DIAGNOSTIC DE PERFORMANCE ÉNERGÉTIQUE

Diagnostic de performance énergétique (DPE) : A 54

Indice d'émission de gaz à effet de serre (GES) : B 9



COLDWELL BANKER
EUROPA REALTY



45 Rue de la Republique
France, 74700, Sallanches



limo@coldwellbanker.fr