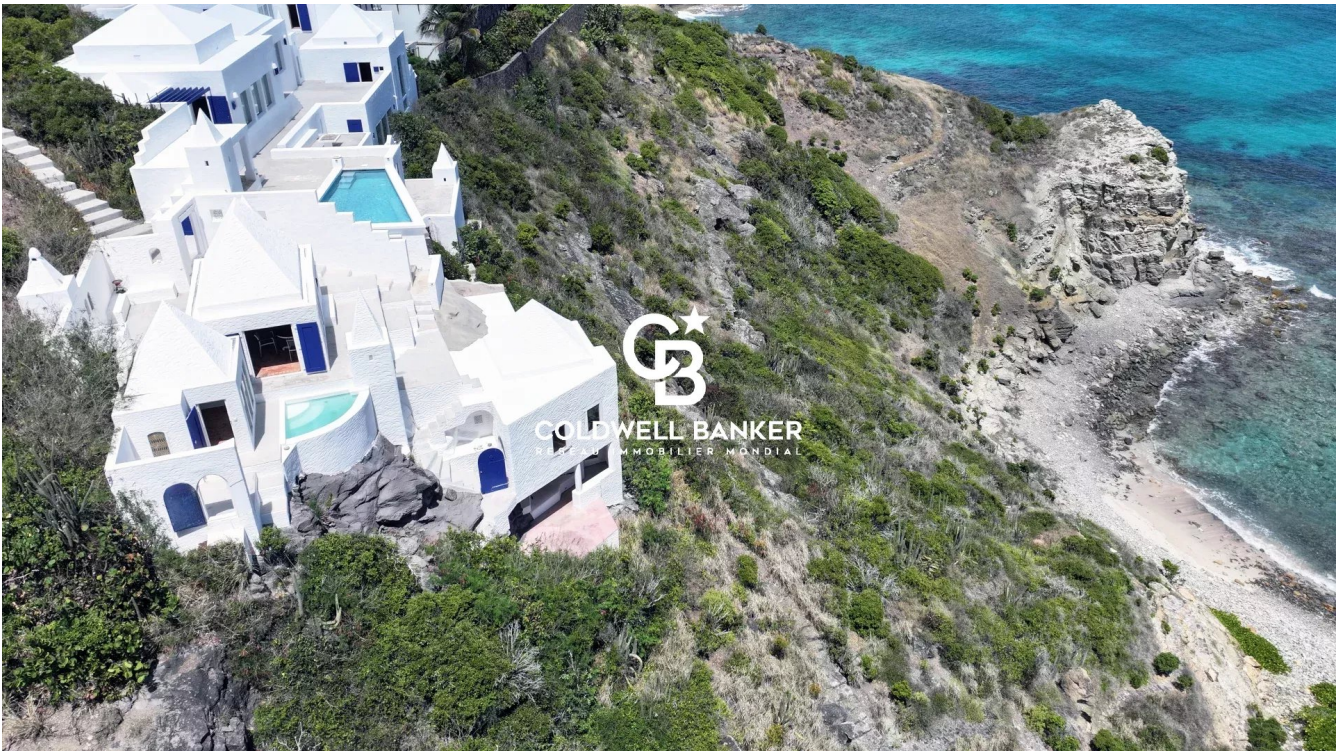


Maison Saint-Barthélemy 311 m²



PRIX DE VENTE : 15 000 000 €

EMAIL : STBARTH@COLDWELLBANKER.FR

DESCRIPTION

This exceptional villa of over 300 m², nestled by the sea, embodies both love and serenity. Designed as a true family home, it currently offers five bedrooms, with the possibility of a different layout to create a sixth. Its various living spaces, including multiple lounges and a functional kitchen, provide the perfect setting for gathering and sharing precious moments.

The singular architecture of this residence, with its luminous tones and refined lines, evokes the landscapes of Greece and contributes to its iconic character. Its unique design, blending modernity with Mediterranean inspiration, makes it a timeless home, recognized worldwide for its originality.

Expansive openings allow natural light to enhance every space and offer spectacular views of the ocean. Numerous terraces invite contemplation, while the swimming pool and punch pool provide exceptional relaxation areas, perfectly in harmony with the surrounding nature.

A rare and valuable feature: a private path leads to a secluded beach, completely preserved and inaccessible both by road and by sea, protected by a coral barrier. This exclusive access ensures absolute privacy and a unique connection with the natural beauty of the area.

Transformed into a setting of excellence, this villa has hosted photo shoots for major fashion houses and has been featured in prestigious publications such as *Vogue*, *Harper's Bazaar*, *Elle Decoration*, and *House & Garden*. Its distinctive architecture and unparalleled ambiance have made it a reference in the world of fashion and design.

Here, every moment is lived with intensity, in an atmosphere of warmth and elegance, where time seems to stand still.

CARACTÉRISTIQUES

Type de bien :	Maison	Surface :	311.0 m ²	NB de pièces :	17 rooms
NB de chambres :	5 bedrooms				

Les informations sur les risques auxquels ce bien est exposé sont disponibles sur le site Géorisques : www.georisques.gouv.fr

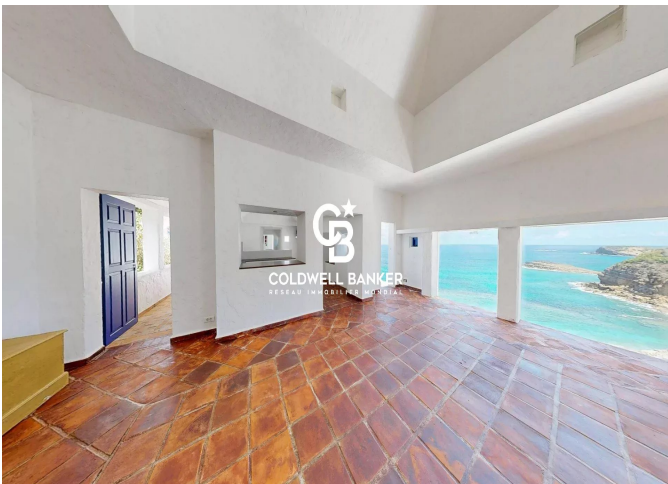
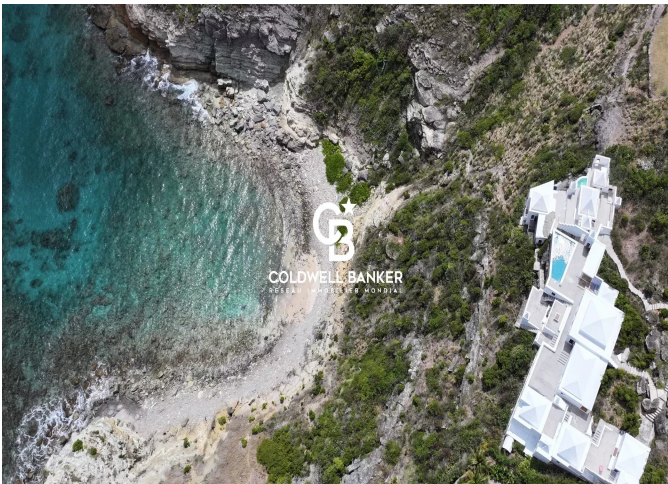
DIAGNOSTIC DE PERFORMANCE ÉNERGÉTIQUE

Diagnostic de performance énergétique (DPE) : Not applicable -1

Indice d'émission de gaz à effet de serre (GES) : Not applicable -1



COLDWELL BANKER
EUROPA REALTY



3 Résidence Jean Bart



TÉL : +590690523425
stbarth@coldwellbanker.fr