

Maison Maisons-Laffitte 245 m²



PRIX DE VENTE : 1 785 000 €

EMAIL : CBAI@COLDWELLBANKER.FR

DESCRIPTION

In the heart of the Maisons-Laffitte park, 20 minutes easy walk from the RER A station and line L, close to schools and sports, built on a large enclosed land in front of a wooded reserve, this late 19th century villa, crossing and very bright thanks to its optimal layout, offers you large living spaces on three levels: on the ground floor, two entrances, a spacious double living room opening onto the terrace, a separate kitchen, toilets; on the 1st floor, 3 large bedrooms, a dressing room, an office, a bathroom with toilets, a shower room, toilets; on the 2nd floor, two bedrooms, an office, a shower room with toilet. A double garage and a large semi-underground basement complete the property.

Work needed. Big potential.

Plan and detailed surface on request by phone.

CARACTÉRISTIQUES

Type de bien :	Maison	Surface :	245.0 m ²	Taxe foncière :	€3.00
NB de pièces :	7 rooms	NB de chambres :	5 bedrooms		

Les informations sur les risques auxquels ce bien est exposé sont disponibles sur le site Géorisques : www.georisques.gouv.fr

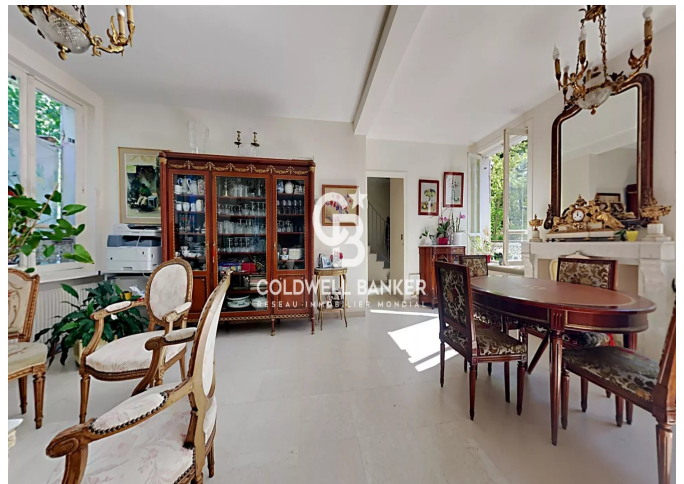
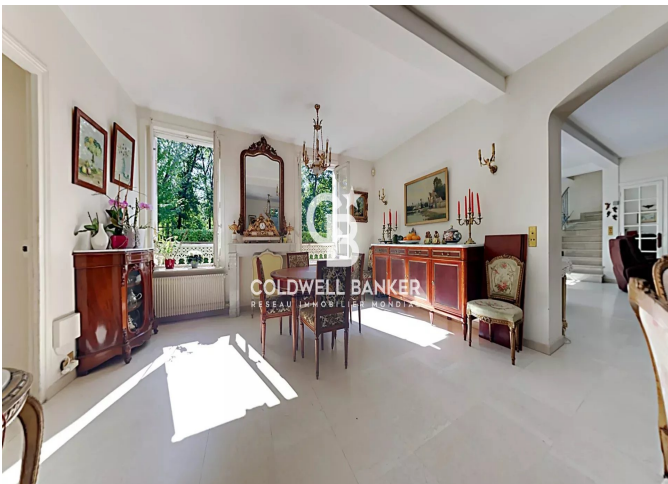
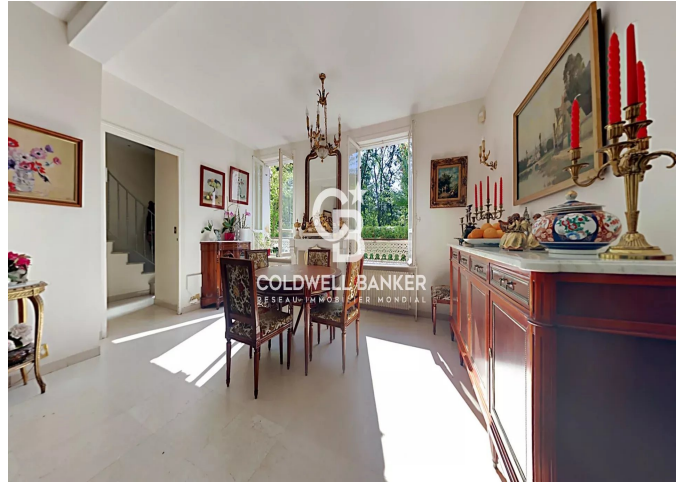
DIAGNOSTIC DE PERFORMANCE ÉNERGÉTIQUE

Diagnostic de performance énergétique (DPE) : E 269

Indice d'émission de gaz à effet de serre (GES) : F 76



COLDWELL BANKER
EUROPA REALTY



176 Avenue Charles de Gaulle
France, 92200, Neuilly-sur-Seine



TÉL : +33147220345
cbai@coldwellbanker.fr