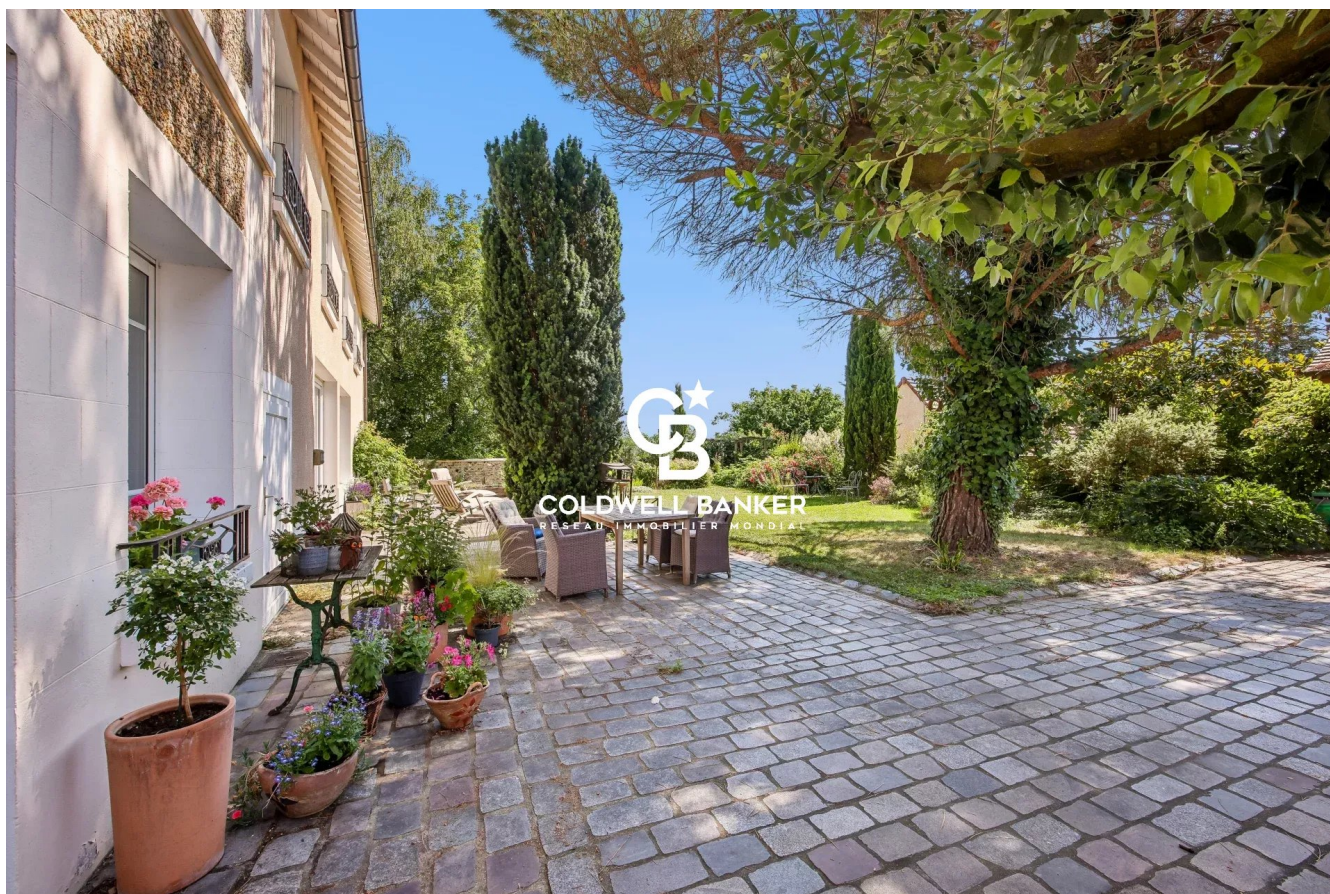


Maison Chambourcy 303 m²



SALE PRICE : 1 150 000 €

EMAIL : WESTLIFE@COLDWELLBANKER.FR

DESCRIPTION

In a highly residential area, a large house measuring 303m² Carrez law (400m² of living space including the attic and workshop) situated on a large landscaped garden with various tree species covering 800m², not overlooked and with a clear view of the valley. The ground floor benefits from a large living area with exposed beams facing southeast with large bay windows, very bright, leading to a spacious terrace and the garden, which is extended by a dining room surrounded by greenery as well as a fully equipped kitchen, a bedroom, and its bathroom.

On the upper floor, in addition to the master suite and its bathroom, you will find 2 other bedrooms, with their own bathrooms, an office, a large playroom, then the attic and another bedroom under the eaves. The house is in excellent condition with lots of character, ideal for a family, in a completely quiet and bucolic setting. There are also 3 garages for vehicles, a large wine cellar. Very good energy performance rating of D. It is located close to all major road networks (A13 and A14 with access to La Défense in 20 minutes), Chambourcy shopping center, St Germain en Laye international high school, and Poissy hospital. RER A at Poissy.

Must see quickly!

FEATURES

Property type:	Maison	Area:	303.0 m ²	Property tax:	€4.00
Number of rooms:	10 rooms	Number of bedrooms:	6 bedrooms		

Les informations sur les risques auxquels ce bien est exposé sont disponibles sur le site Géorisques : www.georisques.gouv.fr

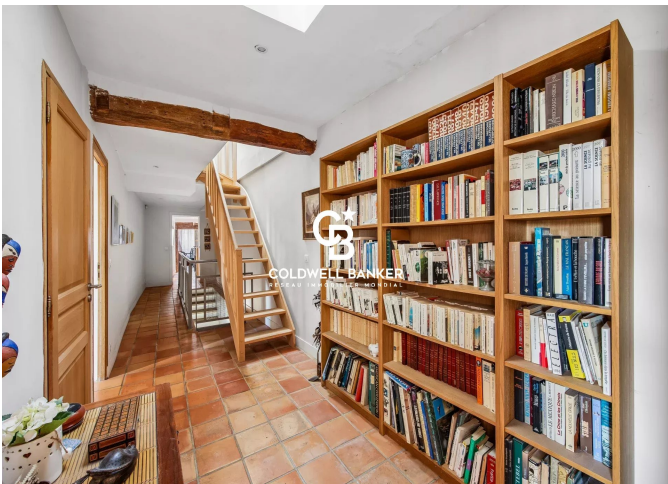
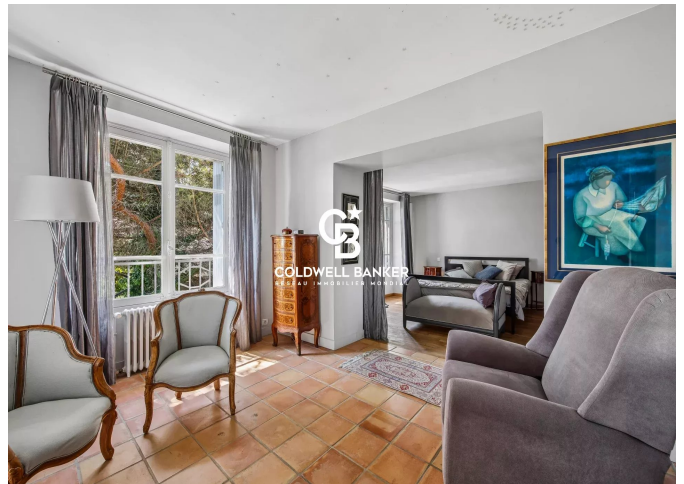
ENERGY PERFORMANCE DIAGNOSIS

Energy performance diagnosis (EPD): D 187

Greenhouse gas emissions (GHG) index: D 40



COLDWELL BANKER
EUROPA REALTY



12 rue Gabriel Péri
France, 92300, Levallois-Perret



PHONE : +33980771381
westlife@coldwellbanker.fr