

Maison Honfleur 240 m²



PRIX DE VENTE : 890 000 €

EMAIL : CBAI@COLDWELLBANKER.FR

DESCRIPTION

Located in a sought-after residential area of Honfleur, this magnificent house built in 2007 is situated on a fenced plot of 1432 m² without overlooked views, offering calm and tranquility.

This property offers you an optimal living space with a large 50 m² living room opening onto a beautiful 200 m² terrace, ideal for sharing moments with family and friends. The 20 m² kitchen is perfect for communal meals. Very bright thanks to its large bay windows overlooking the garden, this house will seduce you with its warm and welcoming atmosphere.

A bedroom, a shower room with separate toilet, an entrance hall, and a laundry room complete this ground floor.

On the first floor, the night area includes a large landing lounge and three large bedrooms with a bathroom, separate toilets including a beautiful master suite with its bathroom.

This house is ideal for those seeking a peaceful living environment while being close to amenities and the center of Honfleur. A double garage completes this property.

1h45 from Paris Porte Maillot

Selling price: €890,000 FAI

Energy consumption: C

Information on the risks to which this property is exposed is available on the Géorisques website:
www.georisques.gouv.fr

Coldwell Banker Alcapa Invest - SIREN 793 427 386

Géraldine Bernardin - Real Estate Commercial Agent - EI - RSAC No. 820172807

-

CARACTÉRISTIQUES

Type de bien :	Maison	Surface :	240.0 m ²	Taxe foncière :	€3.00
NB de pièces :	7 rooms	NB de chambres :	4 bedrooms		

Les informations sur les risques auxquels ce bien est exposé sont disponibles sur le site Géorisques : www.georisques.gouv.fr

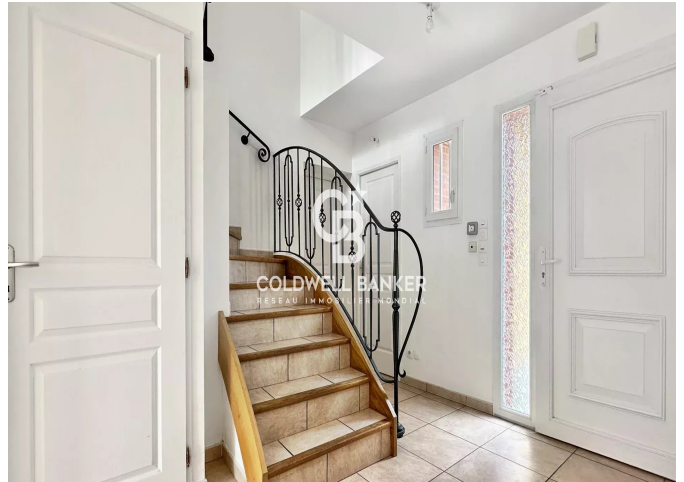
DIAGNOSTIC DE PERFORMANCE ÉNERGÉTIQUE

Diagnostic de performance énergétique (DPE) : C 164

Indice d'émission de gaz à effet de serre (GES) : A 5



COLDWELL BANKER
EUROPA REALTY



176 Avenue Charles de Gaulle
France, 92200, Neuilly-sur-Seine



TÉL : +33147220345
cbai@coldwellbanker.fr