

Maison Honfleur 249 m²



PRIX DE VENTE : 449 000 €

EMAIL : CBAI@COLDWELLBANKER.FR

DESCRIPTION

Let yourself be charmed by this renovated barn of 249 m², set on a 1,354 m² plot. From the moment you enter, you'll discover a vast living area of over 76 m², bathed in natural light. The open kitchen, with a soothing view of the garden, flows harmoniously into the dining room and living area, creating the perfect setting for convivial moments. The ground floor is completed by a bedroom, a shower room, and a gym equipped with a sauna, inviting relaxation and well-being.

Upstairs, a corridor leads to six spacious, bright bedrooms, ideal for welcoming family and friends, along with a large bathroom.

Outside, a flat and lush garden extends, perfect for enjoying sunny days on the pétanque court.

This unique property on the outskirts of Honfleur, in the commune of Genneville, awaits you to become your haven of peace.

2 hours from Porte Maillot via the A13 – 8 minutes from Honfleur – 25 minutes from Deauville – 18 minutes from Pont-l'Évêque train station.

Sale price: €449,000 (fees payable by the seller)

Energy consumption: E

Information on potential risks to this property is available on the Géorisques website:

www.georisques.gouv.fr

Coldwell Banker Alcapa Invest - SIREN 793 427 386

Géraldine Bernardin - Real Estate Agent - EI - RSAC No. 82017280

CARACTÉRISTIQUES

Type de bien :	Maison	Surface :	249.0 m ²	Taxe foncière :	€899.00
NB de pièces :	8 rooms	NB de chambres :	6 bedrooms		

Les informations sur les risques auxquels ce bien est exposé sont disponibles sur le site Géorisques : www.georisques.gouv.fr

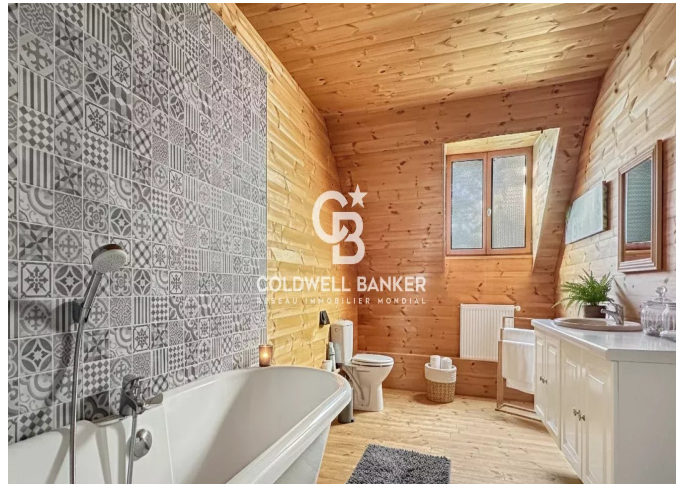
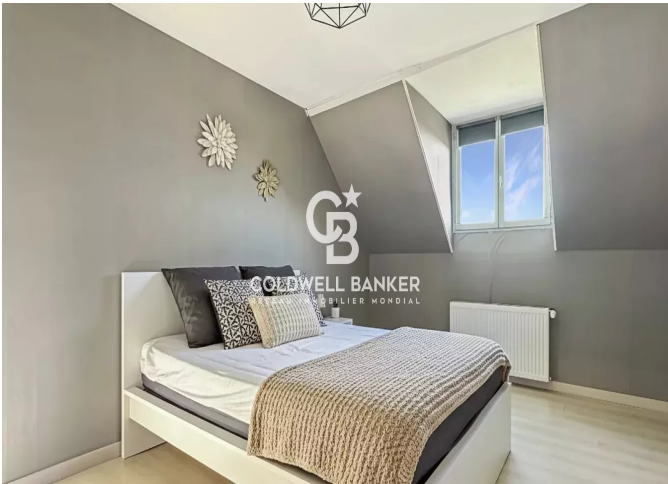
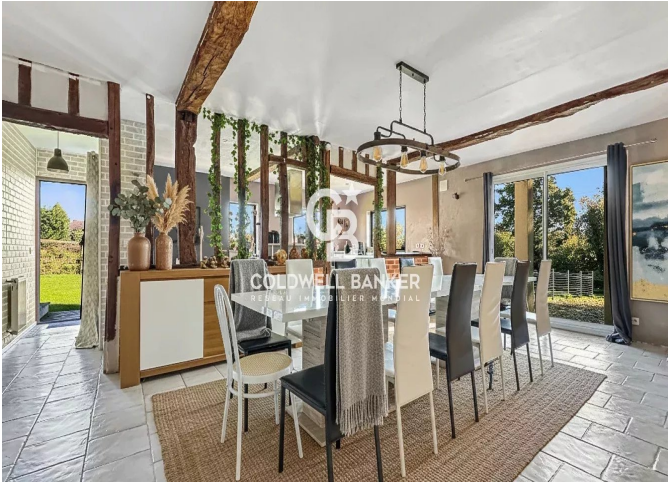
DIAGNOSTIC DE PERFORMANCE ÉNERGÉTIQUE

Diagnostic de performance énergétique (DPE) : D 199

Indice d'émission de gaz à effet de serre (GES) : E 56



COLDWELL BANKER
EUROPA REALTY



176 Avenue Charles de Gaulle
France, 92200, Neuilly-sur-Seine



TÉL : +33147220345
cbai@coldwellbanker.fr