

Maison Arcachon 220 m²



PRIX DE VENTE : 2 365 000 €

EMAIL : IMMOBA@COLDWELLBANKER.FR

DESCRIPTION

Nestled in the peaceful Abatilles district, this architect-designed villa of approximately 245 sqm enjoys an exceptional view over the pine forest.

Fully renovated in 2026, this family home boasts high-end finishes throughout and impresses with its generous proportions and abundant natural light.

The property features a stunning living area of over 100 sqm, seamlessly opening onto an elegant south-facing landscaped garden, complemented by expansive terraces and a swimming pool.

Designed with comfort in mind, the villa offers five bedrooms, including four en-suite suites, as well as a 25 sqm garage.

DPE B / GES A

Estimation of annual energy cost : 1 790 € et 2 490 €.

For further information, please contact Daria VLASOVA, Independent Sales Agent
RSAC No. 883 973 448 – RCP No. MMA127100479.

Find all our properties on IMMOBA.

Information on the risks (natural, mining, technological) to which this property is exposed is available on the Géorisques website: georisques.gouv.fr.

CARACTÉRISTIQUES

Type de bien :	Maison	Surface :	220.0 m ²	NB de pièces :	6 rooms
NB de chambres :	5 bedrooms				

Les informations sur les risques auxquels ce bien est exposé sont disponibles sur le site Géorisques : www.georisques.gouv.fr

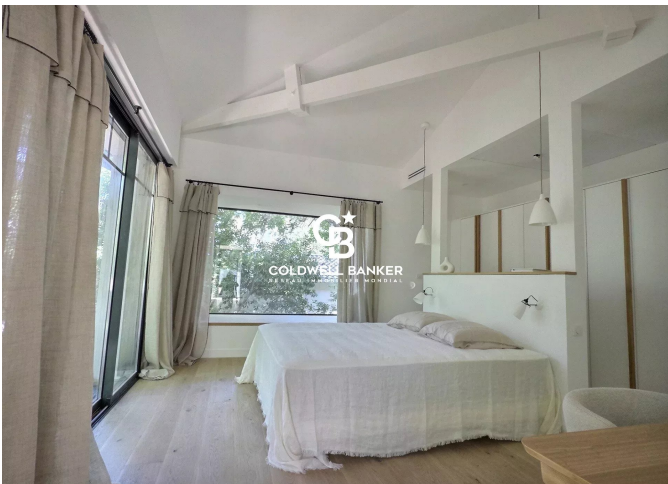
DIAGNOSTIC DE PERFORMANCE ÉNERGÉTIQUE

Diagnostic de performance énergétique (DPE) : B 88

Indice d'émission de gaz à effet de serre (GES) : A 3



COLDWELL BANKER
EUROPA REALTY



281 boulevard de la Côte d'Argent
France, 33120, Arcachon



TÉL : +33557158881
immoba@coldwellbanker.fr