

Maison La Flotte 111 m²



PRIX DE VENTE : 614 000 €

EMAIL : IMMOBILIERE@COLDWELLBANKER.FR

DESCRIPTION

Île de Ré in Complete Privacy

In La Flotte, this house is ready to write a new story. Built in 1998, it captivates with its brightness and spaciousness. Its south-facing living room, bathed in sunlight, invites warmth and conviviality. Family and friends will be charmed by its authentic Rhétais style.

The layout is highly practical, featuring four bedrooms, a bathroom, a shower room, and a walk-in closet—a true bonus.

Outside, there is a parking space on one side, while a south-facing garden promises delightful days in tune with the seasons.

With its great potential, this house is just waiting for your personal touch to become a home that reflects you.

Risk information available on the Géorisques website: www.georisques.gouv.fr

CARACTÉRISTIQUES

Type de bien :	Maison	Surface :	111.84 m ²	Taxe foncière :	€1.00
NB de pièces :	6 rooms	NB de chambres :	4 bedrooms		

Les informations sur les risques auxquels ce bien est exposé sont disponibles sur le site Géorisques : www.georisques.gouv.fr

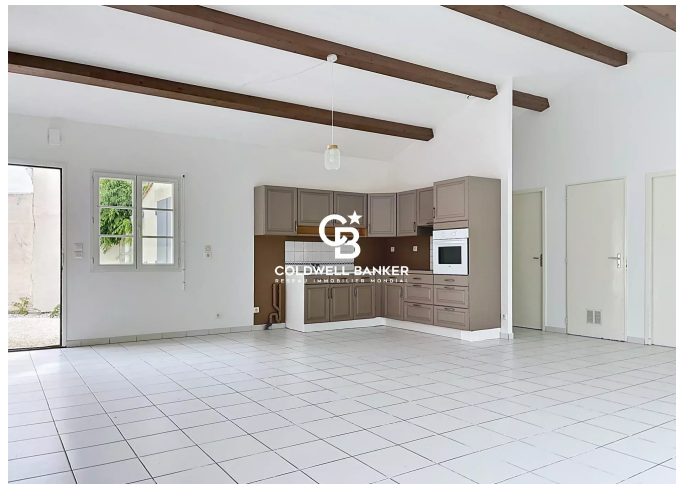
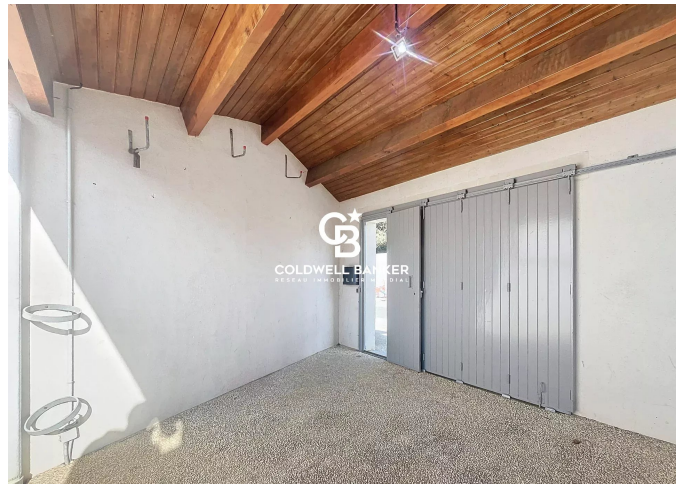
DIAGNOSTIC DE PERFORMANCE ÉNERGÉTIQUE

Diagnostic de performance énergétique (DPE) : D 228

Indice d'émission de gaz à effet de serre (GES) : B 7



COLDWELL BANKER
EUROPA REALTY



7 Rue Pas du Minage
France, 17000, La Rochelle



TÉL : +33586580078
immobiliere@coldwellbanker.fr