

Maison Arcachon 365 m²



PRIX DE VENTE : 2 990 000 €

EMAIL : IMMOBA@COLDWELLBANKER.FR

DESCRIPTION

Ideally located between the beaches of Pyla and the centre of Arcachon, this Mediterranean-style single-storey villa of 400 m² offers a breathtaking view over the Arcachon golf course.

This luxurious property, featuring high-end amenities and built with noble materials such as Burgundy stone, offers generous volumes and 5 suites within a beautifully landscaped 2,230 m² garden.

Every room opens onto wide terraces in exotic wood and a south-facing swimming pool.

A pétanque court, an adjoining garage, a carport and two garden sheds complete this rare property.

Energy performance:

DPE B (74) – GES B (10)

Estimated annual energy costs: between €2,450 and €3,380.

Agency fees are payable by the seller.

For further information, please contact Daria VLASOVA,
Independent Sales Agent
RSAC No. 883 973 448 – RCP No. MMA127100479.

Find all our properties on IMMOBA.

Information on the risks to which this property is exposed is available on the Géorisques website:
georisques.gouv.fr

CARACTÉRISTIQUES

Type de bien :	Maison	Surface :	365.0 m ²	NB de pièces :	7 rooms
NB de chambres :	5 bedrooms				

Les informations sur les risques auxquels ce bien est exposé sont disponibles sur le site Géorisques : www.georisques.gouv.fr

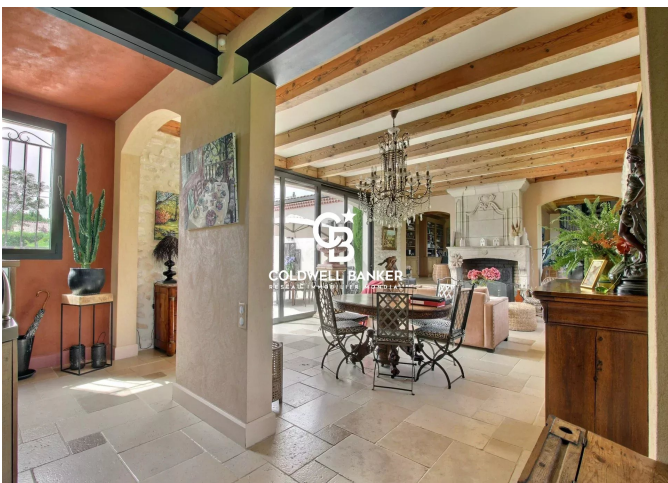
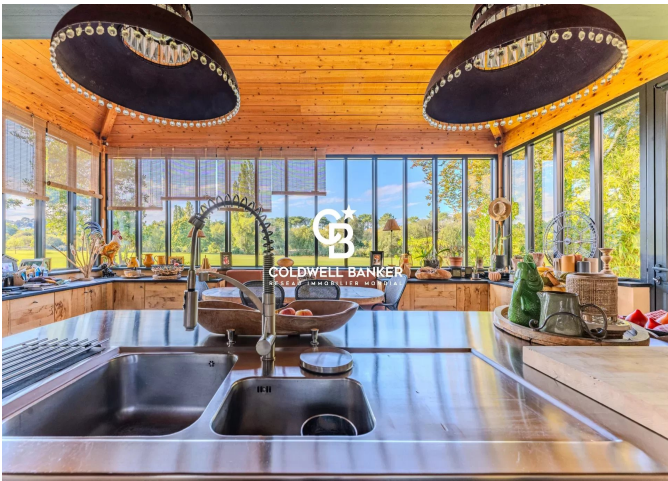
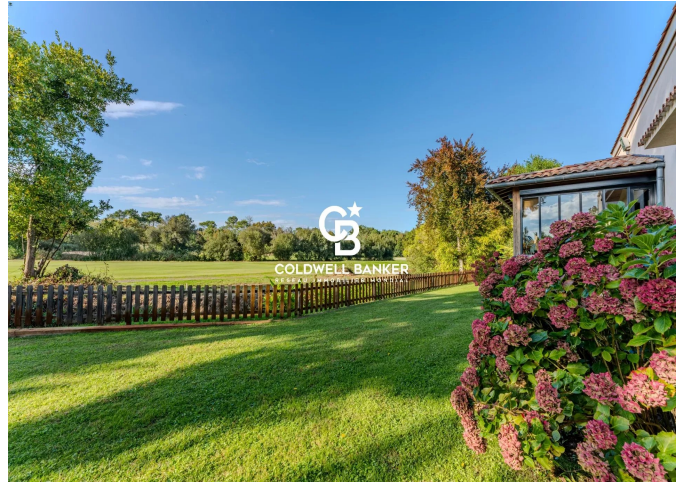
DIAGNOSTIC DE PERFORMANCE ÉNERGÉTIQUE

Diagnostic de performance énergétique (DPE) : B 74

Indice d'émission de gaz à effet de serre (GES) : B 10



COLDWELL BANKER
EUROPA REALTY



281, Boulevard de la Côte d'Argent
France, 33120, Arcachon



TÉL : +33557158881
immoba@coldwellbanker.fr