

Maison Pyla-sur-Mer 280 m²



PRIX DE VENTE : 3 850 000 €

EMAIL : IMMOBA@COLDWELLBANKER.FR

DESCRIPTION

Located in one of the most sought-after areas of Pyla, this contemporary villa of approximately 280 m² offers breathtaking panoramic views of the Arcachon Bay.

Designed to combine elegance and comfort, it features expansive, light-filled living spaces, several generous suites, a fully equipped modern kitchen, and stunning terraces perfect for relaxation or entertaining. Every detail has been carefully considered for a refined and harmonious daily life.

A rare property on the market, ideal for lovers of contemporary design and exceptional vistas.

Price: €3,850,000 HAI – Buyer's fees: €148,000 (3.84%)

Energy Rating (DPE): C – GHG (GES): A

Estimated annual energy costs: €3,640 – €4,960

Complete dossier with photos available upon request.

For more information, contact Claire d'Orlandes, Independent Real Estate Agent.

RSAC: 792 634 016 – RCP: 79043053

All our listings are available on IMMOBA.

Property risk information: www.georisques.gouv.fr

CARACTÉRISTIQUES

Type de bien :	Maison	Surface :	280.0 m ²	Taxe foncière :	€3.00
NB de pièces :	8 rooms	NB de chambres :	5 bedrooms		

Les informations sur les risques auxquels ce bien est exposé sont disponibles sur le site Géorisques : www.georisques.gouv.fr

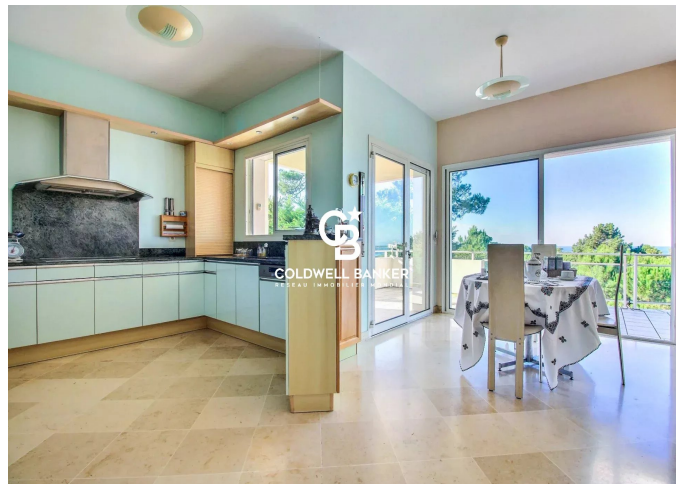
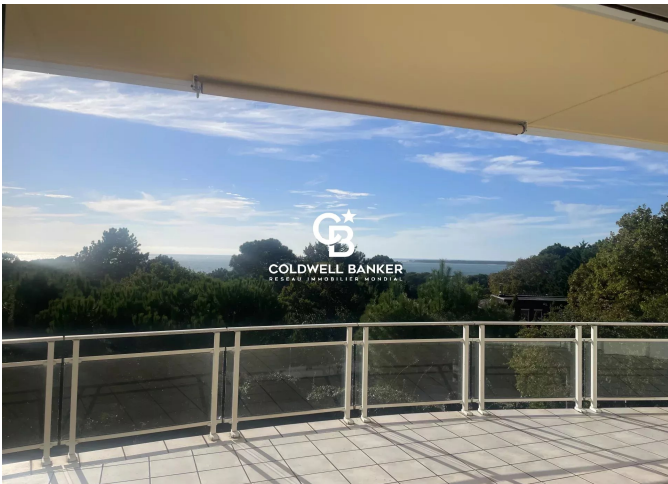
DIAGNOSTIC DE PERFORMANCE ÉNERGÉTIQUE

Diagnostic de performance énergétique (DPE) : C 143

Indice d'émission de gaz à effet de serre (GES) : A 5



COLDWELL BANKER
EUROPA REALTY



281, Boulevard de la Côte d'Argent
France, 33120, Arcachon



TÉL : +33557158881
immoba@coldwellbanker.fr