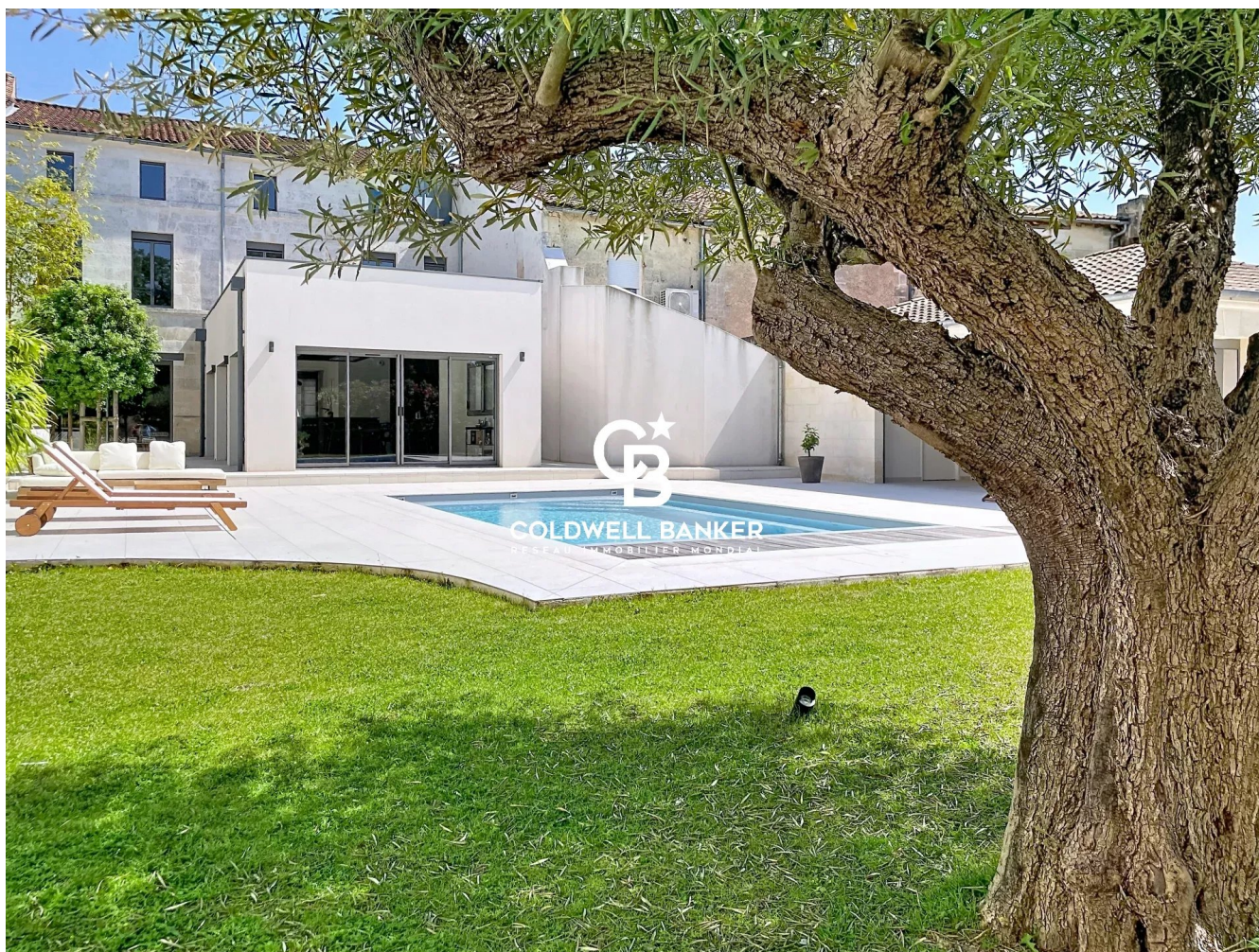


Maison Jonzac 339 m<sup>2</sup>

---



PRIX DE VENTE : 795 000 €

---

EMAIL : [IMMOBILIERE@COLDWELLBANKER.FR](mailto:IMMOBILIERE@COLDWELLBANKER.FR)

## DESCRIPTION

Discover this high-end property combining modern architecture with premium features. This home offers a functional, bright living environment designed with comfort in mind.

### Bright and open living spaces

From the entrance, the house stands out for its seamless flow and abundant natural light. Featuring large floor-to-ceiling windows, the main living area provides a warm and welcoming space for entertaining. It opens directly onto the outdoor areas, effortlessly extending the living space during the warmer months. The eat-in kitchen, fully fitted and equipped with high-quality materials, perfectly combines aesthetics with everyday practicality.

### A sleeping area designed for privacy

The night quarters have been designed to ensure peace and independence for everyone. It includes several spacious bedrooms, including a complete primary suite with a custom walk-in closet and an ensuite bathroom. The other bedrooms also benefit from built-in storage and contemporary bathrooms. The meticulous finishes and choice of durable materials bring a real sense of cohesion to the entire home.

### Beautifully landscaped grounds with total privacy

Outside, the landscaped garden offers a lush and intimate setting. The sun-drenched terrace and the built-in swimming pool allow you to fully enjoy sunny days away from prying eyes.

Located within walking distance of shops, reputable schools, and transport links, this exclusive address makes daily life easy while preserving a rare tranquility. An exceptional property on the local real estate market, ideal for a family looking for a turn-key home. Viewings available by appointment.

## CARACTÉRISTIQUES

Type de bien :	Maison	Surface :	339.0 m <sup>2</sup>	Taxe foncière :	€1.00
NB de pièces :	5 rooms	NB de chambres :	3 bedrooms		

Les informations sur les risques auxquels ce bien est exposé sont disponibles sur le site Géorisques : [www.georisques.gouv.fr](http://www.georisques.gouv.fr)

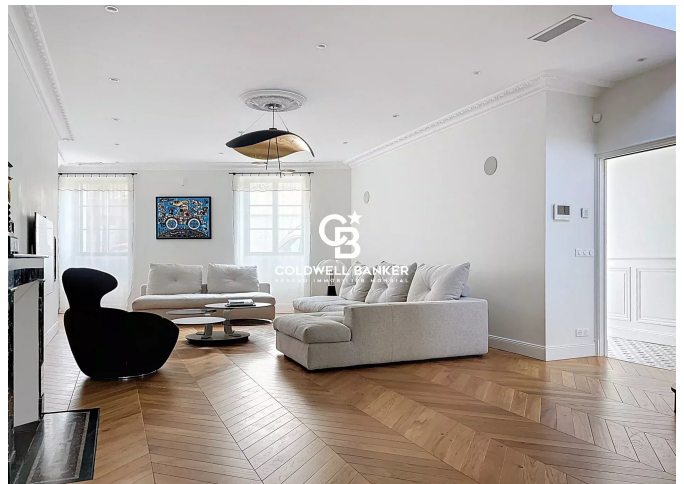
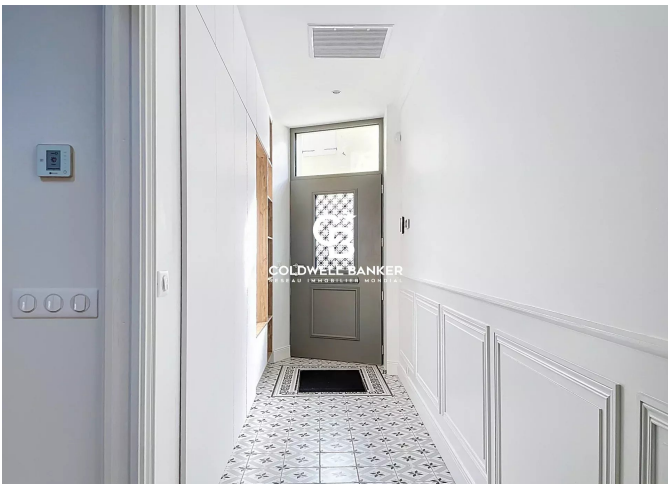
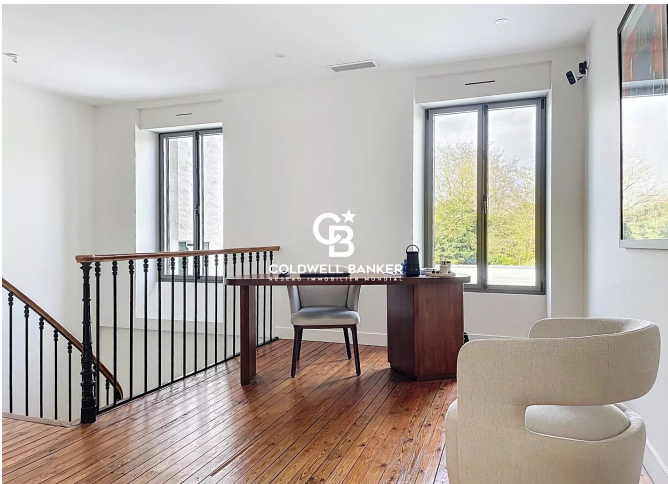
## DIAGNOSTIC DE PERFORMANCE ÉNERGÉTIQUE

Diagnostic de performance énergétique (DPE) : A 58

Indice d'émission de gaz à effet de serre (GES) : A 2



**COLDWELL BANKER**  
**EUROPA REALTY**



7 Rue Pas du Minage  
France, 17000, La Rochelle



TÉL : +33586580078  
[immobiliere@coldwellbanker.fr](mailto:immobiliere@coldwellbanker.fr)