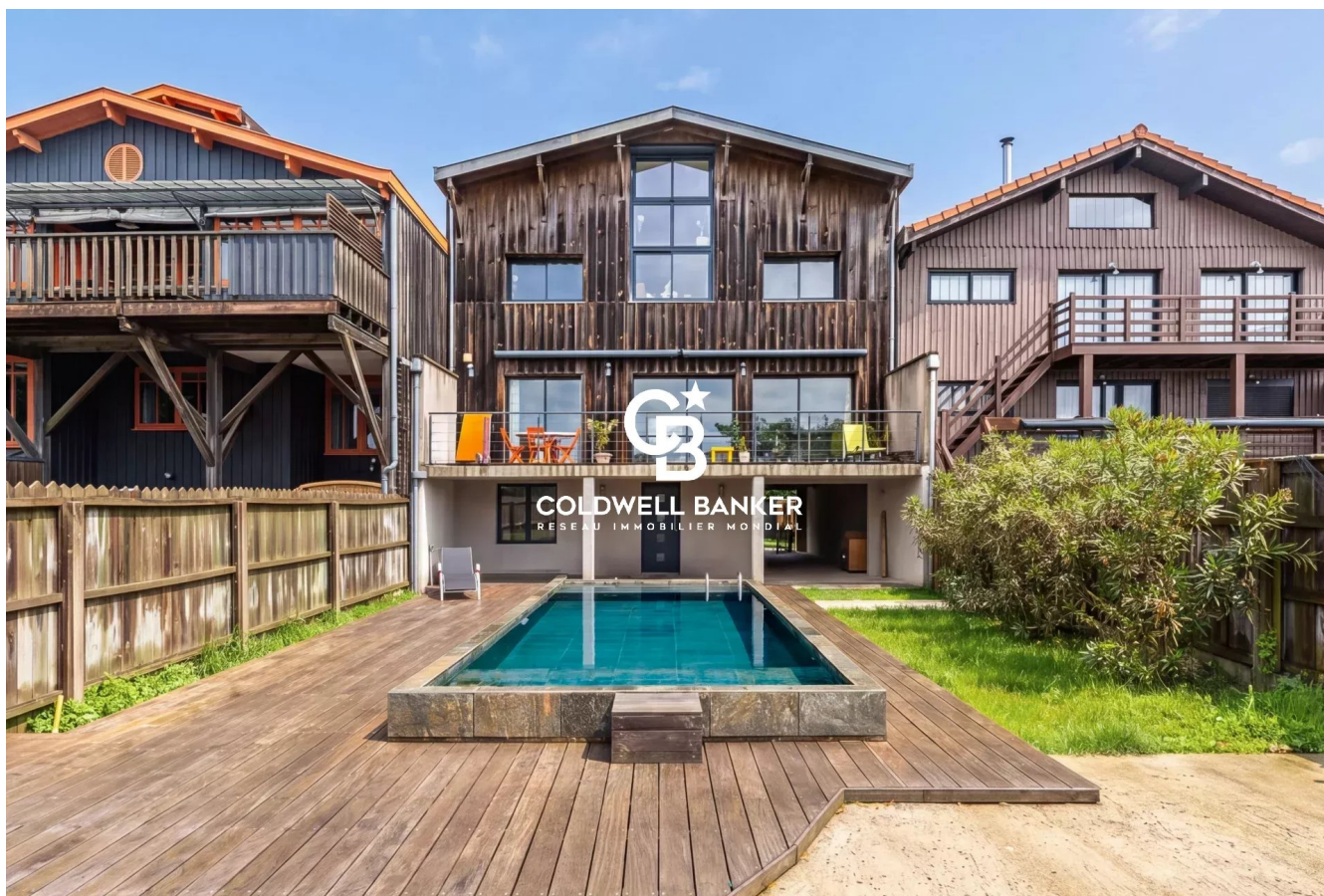


Maison La Teste-de-Buch 200 m²



PRIX DE VENTE : 1 146 000 €

EMAIL : IMMOBA@COLDWELLBANKER.FR

DESCRIPTION

Located in highly sought-after setting, this property enjoys a prime location, with the train station and town center within easy walking distance.

Designed as a true holiday home, it offers the feel of a private village, enhanced by its distinctive architecture on stilts.

Spread over four levels, the house features generous volumes filled with natural light. The main living area opens seamlessly onto the outdoors, creating a harmonious and inviting atmosphere.

The night area includes four bedrooms, perfectly suited for both family living and hosting guests.

A Bali stone swimming pool and a double garage completes the property.

A rare opportunity combining tranquility, brightness, and quality of life in a privileged environment.

Property price: €1,146,000
Fees payable by the seller.

DPE C (70), GES C (14).
Estimated annual energy cost between €1,370 and
€1,900 per year.

Information on the risks to which this property is exposed is available on request or on the Géorisques website: www.georisques.gouv.fr

For more information, please contact Anastasiya GRALLIEN Independent Sales agent
N° RSAC 881094221 N° RCP 127100479

Find all our properties on IMMOBA.

CARACTÉRISTIQUES

Type de bien :	Maison	Surface :	200.0 m ²	NB de pièces :	6 rooms
NB de chambres :	4 bedrooms				

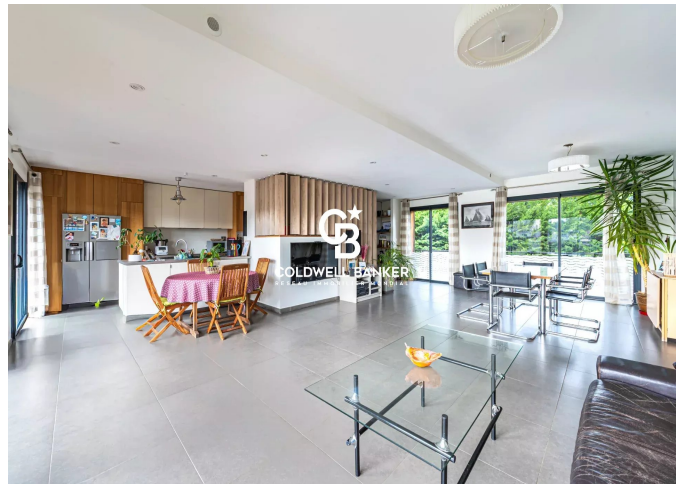
Les informations sur les risques auxquels ce bien est exposé sont disponibles sur le site Géorisques : www.georisques.gouv.fr

DIAGNOSTIC DE PERFORMANCE ÉNERGÉTIQUE

Diagnostic de performance énergétique (DPE) : B 70



COLDWELL BANKER
EUROPA REALTY



281 boulevard de la Côte d'Argent
France, 33120, Arcachon



TÉL : +33557158881
immoba@coldwellbanker.fr