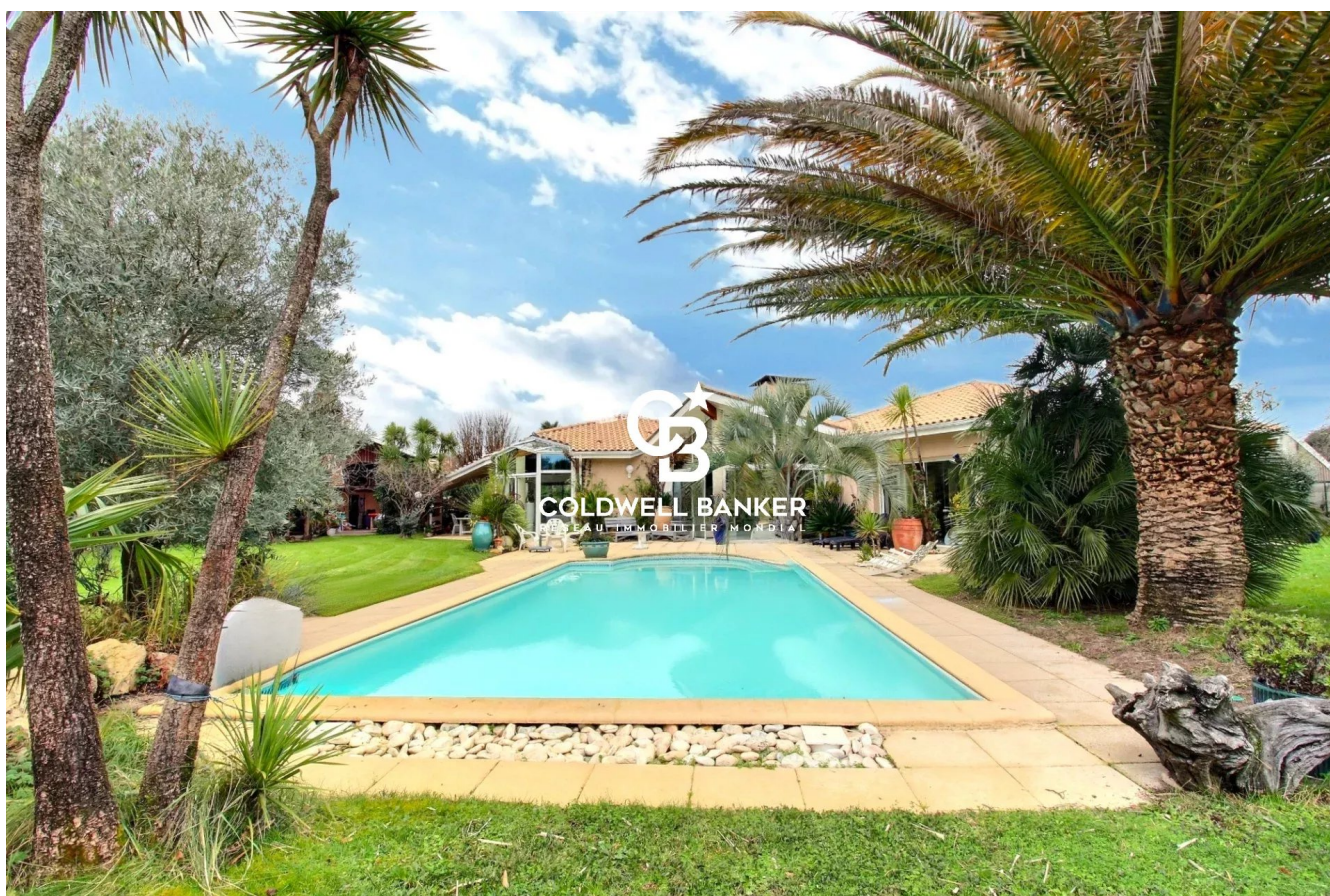


Maison La Teste-de-Buch 232 m²



PRIX DE VENTE : 1 585 000 €

EMAIL : IMMOBA@COLDWELLBANKER.FR

DESCRIPTION

This architect-designed villa, located in the town centre of La Teste-de-Buch, is a true gem.

All on one level, it offers 175 m² of living space on a landscaped garden of 2,280 m², with no overlooking neighbours, ensuring privacy and tranquillity while being close to shops.

Bathed in light thanks to its open spaces and generous volumes, it comprises:

- An entrance leading to a living room with a central fireplace and a mezzanine
- A bright office extending from it
- A dining room and an open kitchen that opens onto a sheltered terrace, ideal for outdoor meals
- A scullery, a laundry room and a WC with a separate entrance

The sleeping area includes:

- Two bedrooms each with a mezzanine and a washbasin, sharing a shower room, perfect for children or teenagers
- A third bedroom with a bathroom with shower, bathtub and double sink

In excellent condition, the house is southeast-facing and opens onto a garden with a large swimming pool.

An outbuilding of 140 m² completes the property, including a garage, a cellar and a workshop, offering multiple possibilities, such as accommodating guests or developing a personal project.

This house combines comfort, modernity and serenity — a rare property to discover without delay!

Energy Performance (DPE): 156 kWhEP/m².year (D) and GHG emissions: 32 kg CO₂e/m².year (D).
Estimated annual costs: €2,550 and €3,510.

Fees payable by the seller.

For more information contact Daria VLASOVA,
Independent Sales Agent
RSAC No.: 883 973 448 RCP No.: MMA127100479.

Find all our properties on IMMOBA.

Information on the risks (natural, mining, technological) to which this property is exposed is available on the Géorisques website: georisques.gouv.fr.

CARACTÉRISTIQUES

Type de bien :	Maison	Surface :	232.0 m ²	NB de pièces :	7 rooms
NB de chambres :	5 bedrooms				

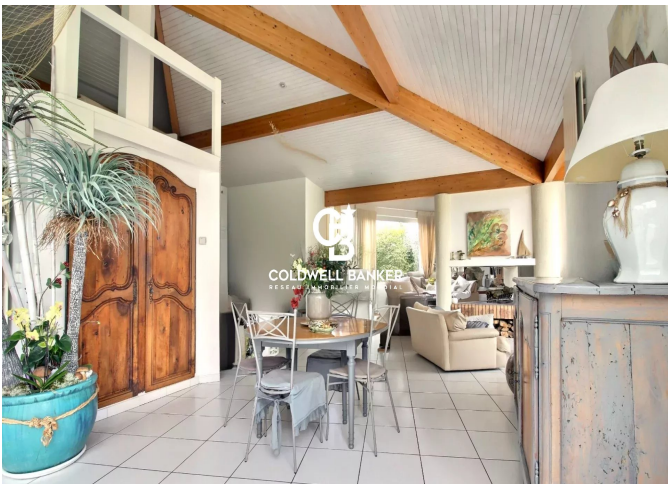
Les informations sur les risques auxquels ce bien est exposé sont disponibles sur le site Géorisques : www.georisques.gouv.fr

DIAGNOSTIC DE PERFORMANCE ÉNERGÉTIQUE

Diagnostic de performance énergétique (DPE) : C 156



COLDWELL BANKER
EUROPA REALTY



281 boulevard de la Côte d'Argent
France, 33120, Arcachon



TÉL : +33557158881
immoba@coldwellbanker.fr