

Maison Lesparre-Médoc 464 m²



PRIX DE VENTE : 595 000 €

EMAIL : IMMOBA@COLDWELLBANKER.FR

DESCRIPTION

The Coldwell Banker Immoba Realty agency is pleased to present to you this vast Landes built in 1981 in an enchanting setting. It has superb reception rooms on two levels as well as 10 bedrooms and 7 bathrooms. The 15,000m² plot contains a small pond among oaks and pines. 20 minutes from the ocean beaches, 10 minutes from the center of Lesparre-Médoc and its many shops, its TER station which connects Bordeaux St-Jean in 1 hour, discover this oasis of tranquility which will also be comfortable as a main residence, holiday home or even as a bed and breakfast activity.

Fees payable by the buyer: €28,000 (5%)

CARACTÉRISTIQUES

Type de bien :	Maison	Surface :	464.0 m ²	Taxe foncière :	€1.00
NB de pièces :	14 rooms	NB de chambres :	10 bedrooms		

Les informations sur les risques auxquels ce bien est exposé sont disponibles sur le site Géorisques : www.georisques.gouv.fr

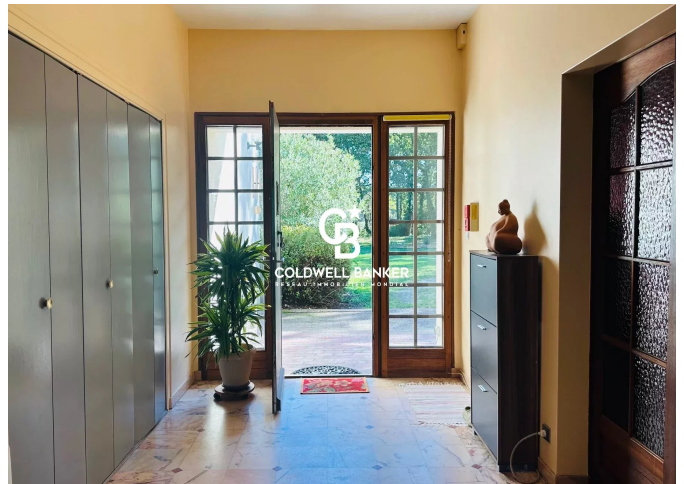
DIAGNOSTIC DE PERFORMANCE ÉNERGÉTIQUE

Diagnostic de performance énergétique (DPE) : C 146

Indice d'émission de gaz à effet de serre (GES) : A 4



COLDWELL BANKER
EUROPA REALTY



13 cours Tournon
France, 33000, Bordeaux



TÉL : +33557340139
immoba@coldwellbanker.fr