

Maison Puilboreau 79 m²



PRIX DE VENTE : 357 000 €

EMAIL : IMMOBILIERE@COLDWELLBANKER.FR

DESCRIPTION

Just a few minutes from La Rochelle, discover a contemporary home built in 2016 and designed for a simple, comfortable, and enjoyable everyday life.

From the moment you walk in, the atmosphere is clear: a bright, open, and welcoming space where you can immediately picture yourself living. The living room, bathed in natural light, opens onto the garden—perfect for summer evenings, weekend brunches, or simply enjoying a quiet moment.

The open kitchen blends seamlessly into this space, ideal for cooking while staying connected with loved ones.

Upstairs, three bedrooms offer plenty of possibilities: a master bedroom, a home office for remote work, a future child's room... It's up to you to imagine your daily life. A modern bathroom completes this sleeping area.

No renovations needed: just move in and enjoy. The house is perfectly maintained and ready to welcome a new chapter.

A garage and parking space round out the property—convenient for everyday life.

The location is a real plus: close to downtown La Rochelle, shops, and schools, while still being in a quiet and pleasant setting.

An ideal home to start a new chapter, combining city life, comfort, and a relaxed lifestyle.

Information on the risks to which this property is exposed is available on the Géorisques website: www.georisques.gouv.fr.

CARACTÉRISTIQUES

Type de bien :	Maison	Surface :	79.0 m ²	NB de pièces :	5 rooms
NB de chambres :	3 bedrooms				

Les informations sur les risques auxquels ce bien est exposé sont disponibles sur le site Géorisques : www.georisques.gouv.fr

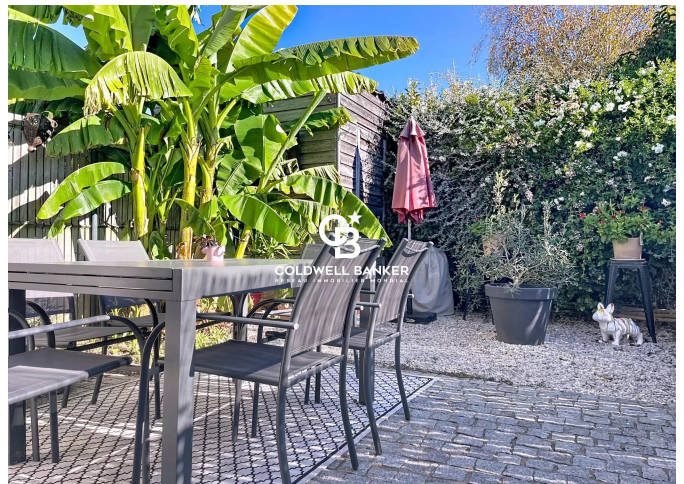
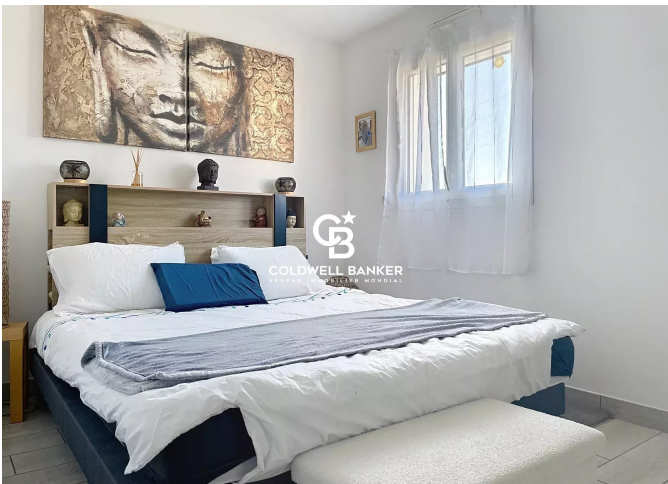
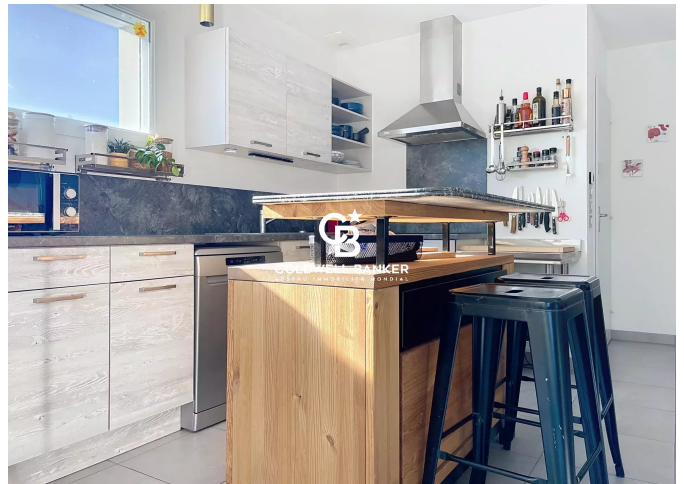
DIAGNOSTIC DE PERFORMANCE ÉNERGÉTIQUE

Diagnostic de performance énergétique (DPE) : A 49

Indice d'émission de gaz à effet de serre (GES) : A 1



COLDWELL BANKER
EUROPA REALTY



22 Cours National Michel BARON
France, 17100, Saintes



TÉL : +33546977797
immobiliere@coldwellbanker.fr