

Maison Saint-Césaire 420 m²



PRIX DE VENTE : 600 000 €

EMAIL : IMMOBILIERE@COLDWELLBANKER.FR

DESCRIPTION

Nestled in lush greenery, in the heart of a peaceful village and just 12 minutes from Saintes, lies this exceptional mansion, which has been carefully and completely renovated. Over 400 m² of charm and elegance, where the character of cut stone meets modern comfort, for a unique living experience.

From the moment you enter, the atmosphere is captivating: generous volumes, abundant light, and refinement are revealed at every turn. The L-shaped kitchen, extended by its pantry/laundry room, opens onto a cozy dining room with a fireplace insert, extended by a veranda, an ideal space for sharing moments together in any season.

The 30 m² gallery leads to the garden and serves an air-conditioned living room with a fireplace, a true cocoon of relaxation, as well as a separate apartment, perfect for welcoming your guests in complete autonomy.

Upstairs, three bedrooms, one with a veranda, share a bathroom. An elegant and intimate master suite completes this level and offers a space dedicated to the tranquility of the parents.

A wine cellar, an outbuilding, and two garages totaling more than 100 m² complete this rare property.

Outside, the magic happens: in over 8,100 m² of enclosed, wooded grounds, you will find a heated swimming pool and a pond inhabited by koi carp and water lilies, all set to the sound of birdsong. A timeless place where nature and elegance come together to create a true haven of peace.

This residence is more than just a house: it is a way of life.

Risks Information available on the Géorisques website: www.georisques.gouv.fr.

CARACTÉRISTIQUES

Type de bien :	Maison	Surface :	420.0 m ²	Taxe foncière :	€1.00
NB de pièces :	11 rooms	NB de chambres :	5 bedrooms		

Les informations sur les risques auxquels ce bien est exposé sont disponibles sur le site Géorisques : www.georisques.gouv.fr

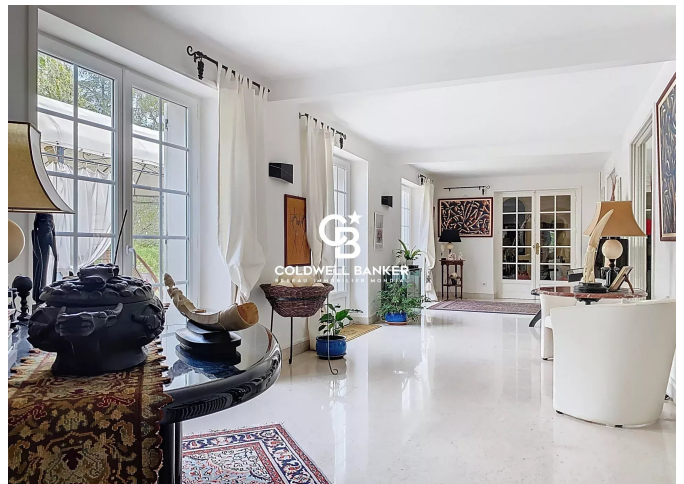
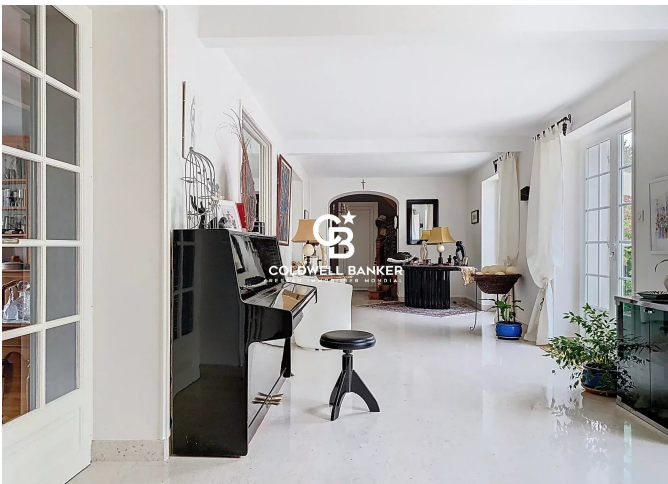
DIAGNOSTIC DE PERFORMANCE ÉNERGÉTIQUE

Diagnostic de performance énergétique (DPE) : C 162

Indice d'émission de gaz à effet de serre (GES) : A 5



COLDWELL BANKER
EUROPA REALTY



22 Cours National Michel BARON
France, 17100, Saintes



TÉL : +33546977797
immobiliere@coldwellbanker.fr