

Maison Beaurepaire 289 m²



PRIX DE VENTE : 895 000 €

EMAIL : IMMOBILIERE@COLDWELLBANKER.FR

DESCRIPTION

Beyond a residence, this 330 sqm (3,550 sq ft) masterpiece is an odyssey of glass and pure lines, where every hour of the day composes a new living landscape over a one-hectare park. Located just 45 minutes from the Atlantic breezes, this high-security estate offers an unparalleled lifestyle at the crossroads of Nantes and the world-renowned Puy du Fou.

The Art of the Moment

The heart of the home opens onto a 1,000+ sq ft majestic reception area, a sanctuary of clarity where the gaze drifts into the treetops. Life here flows seamlessly between whispered conversations in the lounge, total immersion in your 500+ sq ft private cinema, or inspiration in the suspended mezzanine office.

A Private Retreat of Serenity

The sleeping quarters are designed as a retreat from the world. The Master Suite, with its panoramic bathroom, transforms waking up into a meditation facing the gardens. Three additional luxury suites welcome guests in the hushed comfort of a boutique hotel, while a 470 sq ft fitness room invites vitality overlooking the azure of a heated pool.

A Protected Domain, A Vision to Create

Nestled in absolute privacy under high-level security, the 2.3-acre park is a haven of silence. Stone terraces invite long summer evenings, just a short drive from the Vendée coastline. For visionaries, a portion of the land remains buildable—the perfect canvas for an extension or a prestigious guesthouse project.

Sovereign Balance

Perfectly positioned between the strategic hubs of Nantes and Cholet, this confidential address is the ultimate crossroads for CEOs and aesthetes seeking absolute discretion.

Risk information available on the website : www.georisques.gouv.fr

CARACTÉRISTIQUES

Type de bien :	Maison	Surface :	289.33 m ²	Taxe foncière :	€2.00
NB de pièces :	10 rooms	NB de chambres :	4 bedrooms		

Les informations sur les risques auxquels ce bien est exposé sont disponibles sur le site Géorisques : www.georisques.gouv.fr

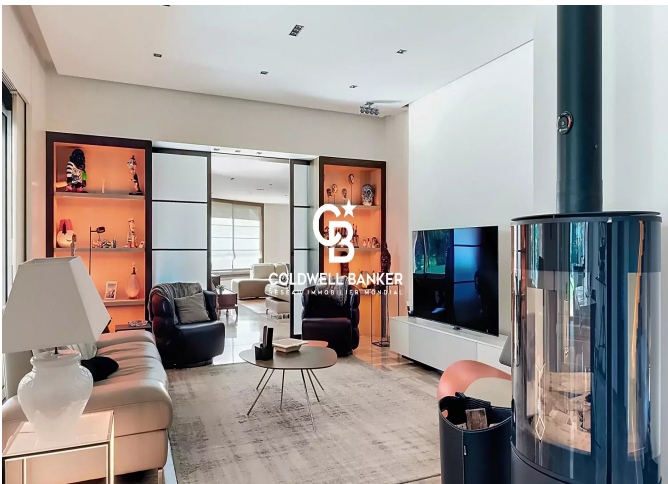
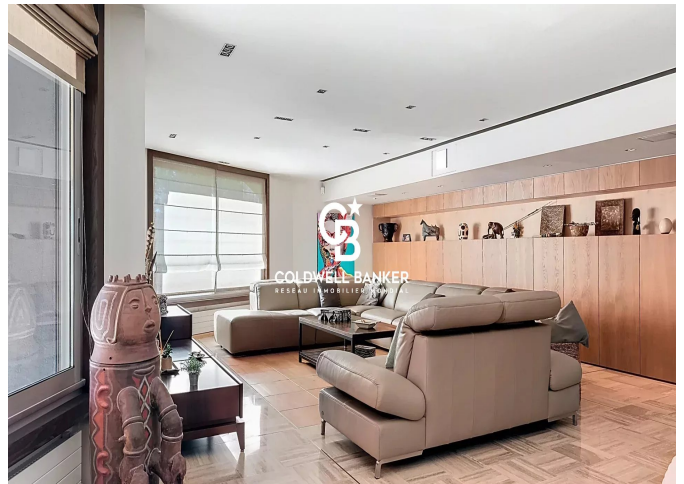
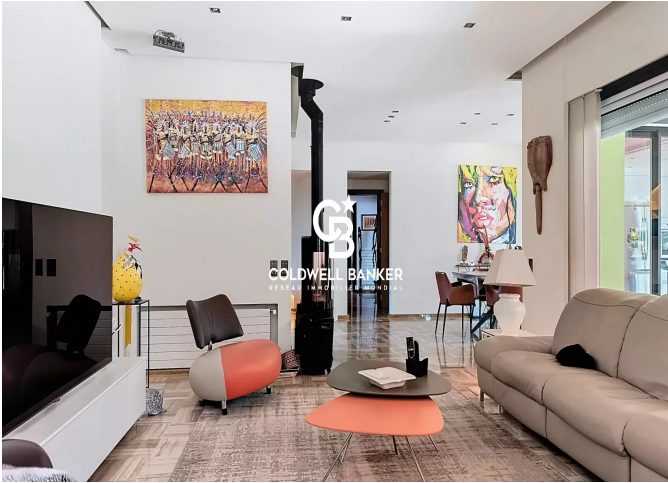
DIAGNOSTIC DE PERFORMANCE ÉNERGÉTIQUE

Diagnostic de performance énergétique (DPE) : B 92

Indice d'émission de gaz à effet de serre (GES) : A 3



COLDWELL BANKER
EUROPA REALTY



22 Cours National Michel BARON
France, 17100, Saintes



TÉL : +33546977797
immobiliere@coldwellbanker.fr