

Maison Les Sables-d'Olonne 270 m²



PRIX DE VENTE : 2 615 000 €

EMAIL : IMMOBILIERE@COLDWELLBANKER.FR

DESCRIPTION

Coldwell Banker is proud to present a rare piece of architectural heritage in Les Sables-d'Olonne. Built in 1908, Villa Flore perfectly balances historical elegance with high-end contemporary comfort.

Ocean Views & Grand Volumes

The heart of this residence is a 60 sqm (approx. 645 sq. ft.) living space, designed to maximize the panoramic views over the Bay. Large openings invite the Atlantic light into every corner. For seamless living, a private elevator serves all floors.

Sophisticated Layout

The interior distribution is designed to ensure privacy and comfort for residents and guests alike:

The Master Floor: The entire top level is dedicated to a private master suite—a quiet, dominant retreat with a unique perspective.

The Guest Level: The ground floor features three functional bedrooms, including two with ensuite shower rooms, providing independence for family or visitors.

Urban Outdoor Living & Parking

To the rear, the villa offers a garden and terrace designed as an urban patio. This outdoor space provides a peaceful retreat, tucked away from the vibrant energy of the promenade.

A rare and essential feature for a seafront property: a double garage (two vehicles) completes this exceptional estate.

Confidential file and private viewing upon request.

CARACTÉRISTIQUES

Type de bien :	Maison	Surface :	270.38 m ²	Ascenseur :	Oui
Taxe foncière :	€4.00	NB de pièces :	9 rooms	NB de chambres :	4 bedrooms

Les informations sur les risques auxquels ce bien est exposé sont disponibles sur le site Géorisques : www.georisques.gouv.fr

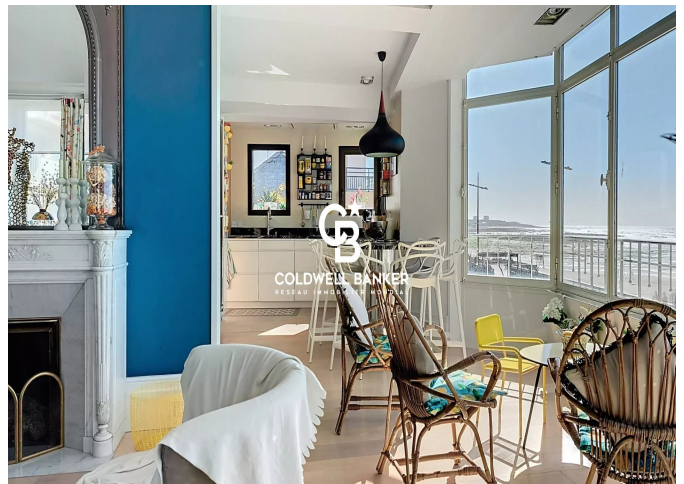
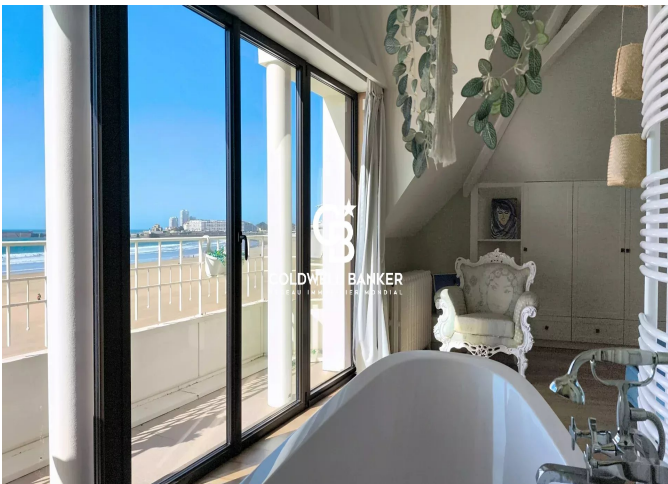
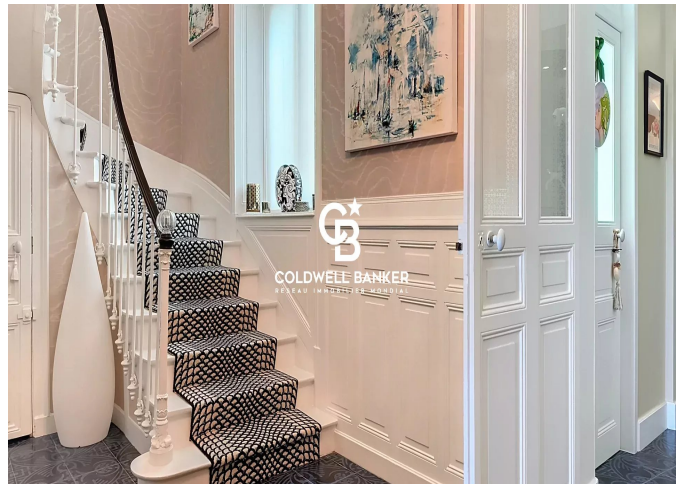
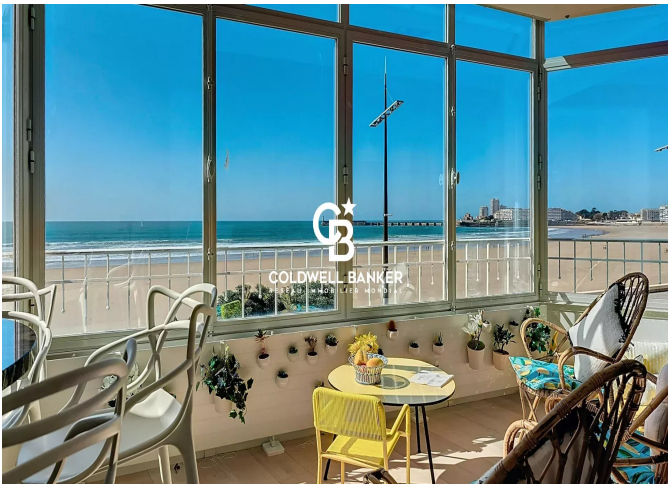
DIAGNOSTIC DE PERFORMANCE ÉNERGÉTIQUE

Diagnostic de performance énergétique (DPE) : C 134

Indice d'émission de gaz à effet de serre (GES) : C 24



COLDWELL BANKER
EUROPA REALTY



22 Cours National Michel BARON
France, 17100, Saintes



TÉL : +33546977797
immobiliere@coldwellbanker.fr