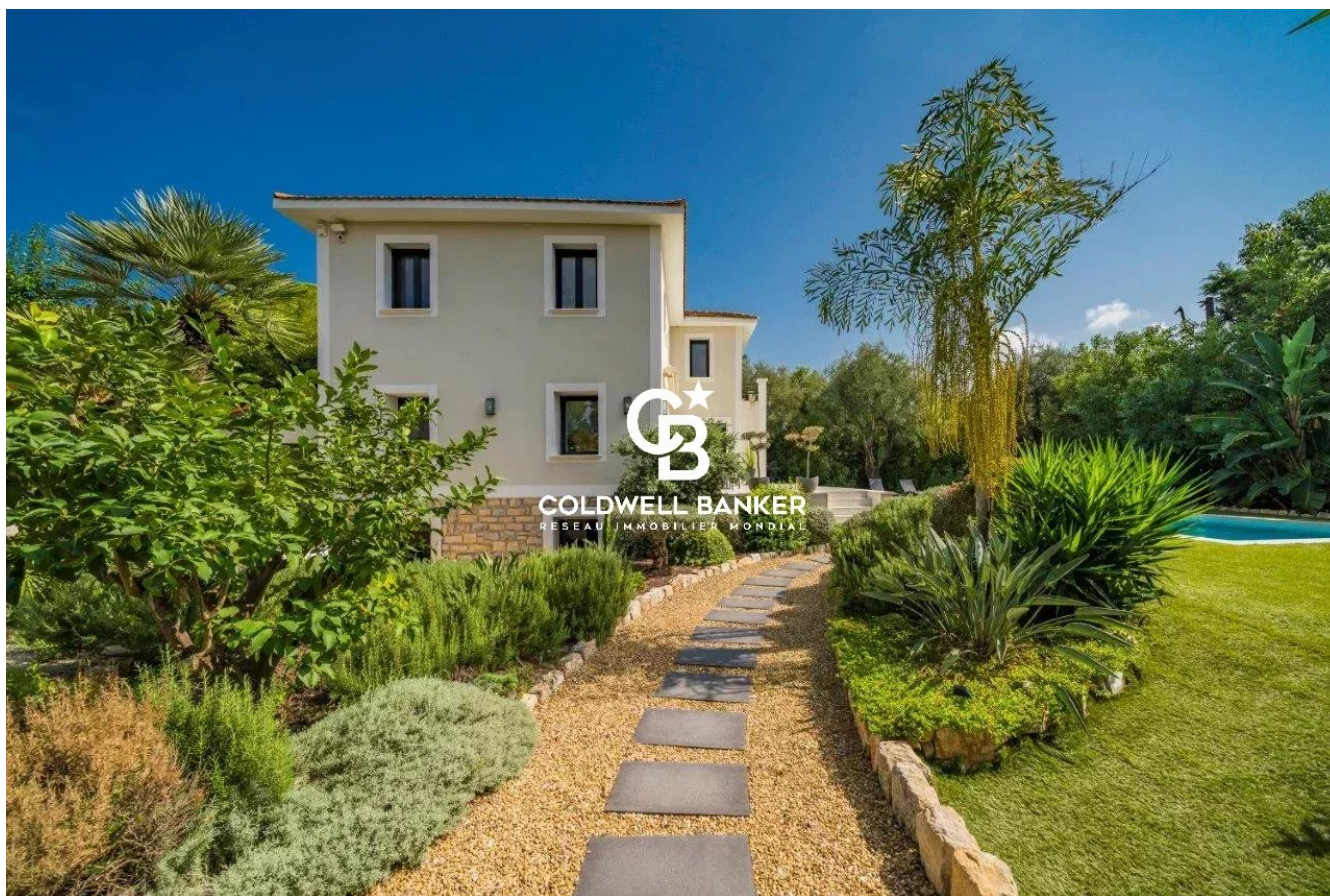



Maison Antibes 250 m²



PRIX DE VENTE : 2 500 000 €

EMAIL : STANDINGREALTY@COLDWELLBANKER.FR

DESCRIPTION

Set within a secure gated domain, this fully renovated contemporary villa enjoys a  and private environment, surrounded by greenery and without overlooking, just 500 metres from the sandy beaches.

Built on a flat landscaped plot of approximately 1,000 sqm, the property benefits from a south-facing exposure, offering excellent natural light throughout the day.

With a total surface of approximately 250 sqm, the villa stands out for the quality of its finishes and its generous volumes, featuring a cathedral-style living room filled with natural light, extended by a high-end fully equipped open-plan kitchen, a study area and a lounge space, all opening onto the terrace and garden.

Upstairs, three en-suite bedrooms, including a spacious master suite with balcony and bespoke walk-in wardrobe, offer comfort and privacy.

On the garden level, a bedroom with shower room, a second bedroom currently being completed, a laundry room, and an additional space that can be converted into a games room or fitness area complete the property.

The outdoor areas offer generous spaces with a large terrace, a 13 x 4 m saltwater swimming pool, and a carefully landscaped garden in a green and peaceful setting.

A garage, a carport and several additional parking spaces (up to five vehicles) complete the property.

Located just 7 minutes from Cannes and 10 minutes from Cap d'Antibes, this property benefits from a prime location and well-appointed features.

Fees payable by the seller

Property tax: €1,753/year

Information on the risks to which this property is exposed is available on the Géorisques website:
georisques.gouv.fr

CARACTÉRISTIQUES

Type de bien :	Maison	Surface :	250.0 m ²	Taxe foncière :	€1.00
NB de pièces :	6 rooms	NB de chambres :	4 bedrooms		

Les informations sur les risques auxquels ce bien est exposé sont disponibles sur le site Géorisques : www.georisques.gouv.fr

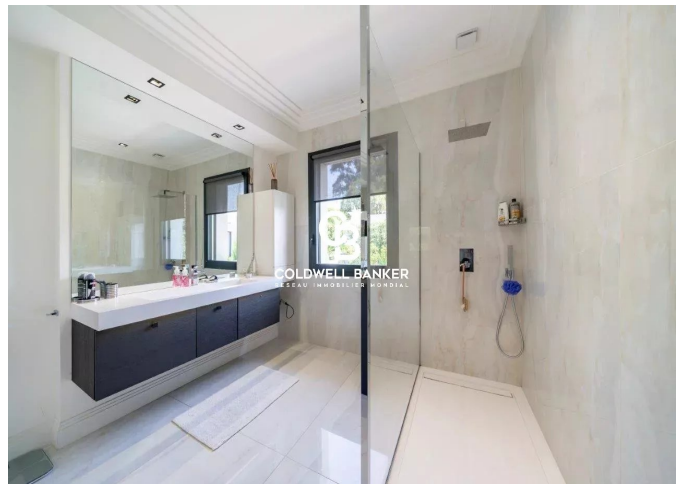
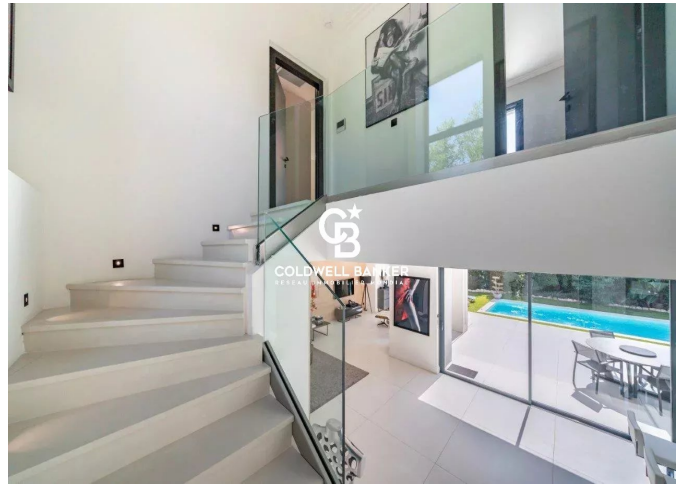
DIAGNOSTIC DE PERFORMANCE ÉNERGÉTIQUE

Diagnostic de performance énergétique (DPE) : E 273

Indice d'émission de gaz à effet de serre (GES) : B 8



COLDWELL BANKER
EUROPA REALTY



11 rue Chauvain
France, 06000, Nice



TÉL : +33493852932
standingrealty@coldwellbanker.fr