

Maison Les Adrets-de-l'Estérel 180 m²



PRIX DE VENTE : 1 290 000 €

EMAIL : ESTERELREALTY.SAINTRAPHAEL@COLDWELLBANKER.FR

DESCRIPTION

Here's a polished and professional English translation of your property description, faithful to your original French tone and suitable for an international luxury audience:

Contemporary design, privacy, and Mediterranean panorama

Nestled within a private and discreet residential domain, this contemporary villa enjoys an exceptional elevated position between the sea and the Estérel mountains. A secure environment, absolute tranquility, and a panoramic view over the Mediterranean immediately define its rare character.

The bright and spacious living area, featuring large floor-to-ceiling windows, opens wide onto spectacular sea views and extends naturally onto generous terraces. The volumes are open and airy, the light omnipresent, and the architecture distinctly contemporary.

The elegantly integrated open-plan kitchen fosters a sense of conviviality, perfectly aligned with the refined Mediterranean lifestyle.

The property offers four bedrooms, including a master suite, as well as an office, two shower rooms, one bathroom, and well-optimized functional spaces. Every detail has been carefully designed to deliver comfort, fluidity, and discretion.

Set on a beautifully landscaped plot of approximately 1,586 sqm, the villa features a sleek-lined swimming pool, expansive terraces, and a garage. Altogether, it represents an ideal primary or secondary residence combining security, exclusivity, and an exceptional panorama.

A refined contemporary villa, ideally located on the French Riviera, designed for an international clientele seeking privacy and a spectacular Mediterranean view.

Full file and visit upon request.

Vanessa SOARES – Williams AUREILLE

Prestige Real Estate Consultant – Global Luxury Brand Specialist

Esterel Realty Coldwell Banker – Coldwell Banker Europe

+33 (0) 6 72 85 21 09 | +33 (0) 6 82 82 25 39

vanessa.soares@coldwellbanker.fr | williams.aureille@coldwellbanker.fr

CARACTÉRISTIQUES

Type de bien :	Maison	Surface :	180.07 m ²	NB de pièces :	5 rooms
NB de chambres :	4 bedrooms				

Les informations sur les risques auxquels ce bien est exposé sont disponibles sur le site Géorisques : www.georisques.gouv.fr

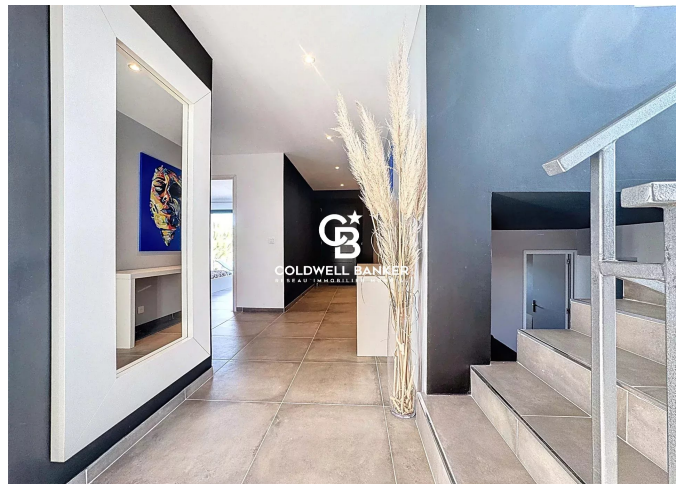
DIAGNOSTIC DE PERFORMANCE ÉNERGÉTIQUE

Diagnostic de performance énergétique (DPE) : C 128

Indice d'émission de gaz à effet de serre (GES) : B 7



COLDWELL BANKER
EUROPA REALTY



44 Avenue du Général Leclerc
France, 83700, Saint-Raphaël



TÉL : +33494193440
esterelrealty.saintraphael@coldwellb

