

Maison Nice 241 m²



PRIX DE VENTE : 2 110 000 €

EMAIL : STANDINGREALTY@COLDWELLBANKER.FR

DESCRIPTION

Located in a private gated estate with a caretaker, this property offers a prime location with an open sea view and full south exposure. A bright and pleasant setting, ideal for a high-end renovation project. Set on a flat plot of 2,136 m², the villa offers 241 m² of living space and 5 bedrooms, providing great potential to create a bespoke contemporary residence.

Key features:

High-end gated domain with security and caretaker

Panoramic sea view

Full south exposure

Pleasant and preserved environment

Flat 2,136 m² plot, rare in the area

235 m² villa with 5 bedrooms

Strong potential for modernization

Quick access to amenities, Nice, and the coastline

A rare opportunity to transform this property into an exceptional contemporary villa, in one of the most sought-after locations in the area.

Seller's fees apply

Property tax: €5,570 per year

Information on the risks this property is exposed to is available on the Géorisques website:

georisques.gouv.fr

CARACTÉRISTIQUES

Type de bien :	Maison	Surface :	241.0 m ²	Taxe foncière :	€5.00
NB de pièces :	6 rooms	NB de chambres :	4 bedrooms		

Les informations sur les risques auxquels ce bien est exposé sont disponibles sur le site Géorisques : www.georisques.gouv.fr

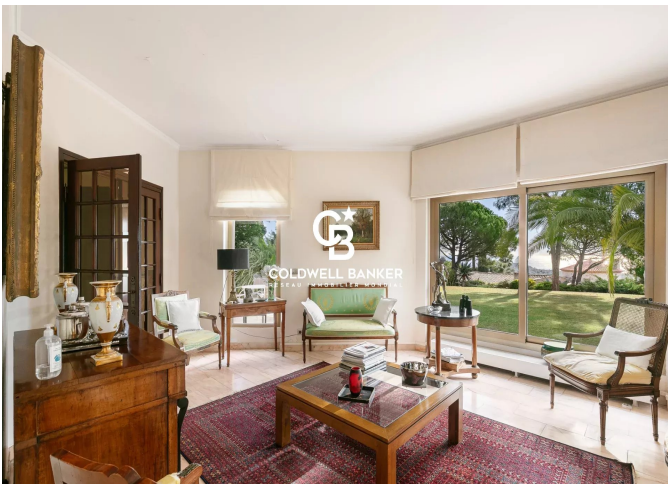
DIAGNOSTIC DE PERFORMANCE ÉNERGÉTIQUE

Diagnostic de performance énergétique (DPE) : D 220

Indice d'émission de gaz à effet de serre (GES) : D 42



COLDWELL BANKER
EUROPA REALTY



11 rue Chauvain
France, 06000, Nice



TÉL : +33493852932
standingrealty@coldwellbanker.fr