

Maison Puget-sur-Argens 270 m²



PRIX DE VENTE : 1 895 000 €

EMAIL : ESTERELREALTY.SAINTRAPHAEL@COLDWELLBANKER.FR

DESCRIPTION

Nestled in a green and peaceful environment, this superb contemporary neo-Provençal-style villa of approximately 270 sqm combines refinement, comfort, and exceptional quality finishes.

Built in 2006, all on one level, the property lies within a private gated domain, offering calm and serenity. A motorized gate opens onto a beautiful driveway leading to a carport, a spacious garage, and an elegant entrance.

The generous living areas, spanning around 93 sqm, include a bright living room with 3.2 m cathedral ceilings, a welcoming dining area, and a fully equipped modern kitchen, all bathed in natural light through large aluminium double-glazed windows opening onto the south-facing terrace and the infinity pool (12 × 6 m) with reinforced concrete structure and mosaic finish.

The night area offers four bedrooms, including a master suite with bathroom (bathtub and shower), two additional shower rooms, three WCs, and a utility room.

The meticulously maintained landscaped garden benefits from an automatic irrigation system fed by a natural water source.

High-end features include underfloor heating and cooling, a heat pump, full-body porcelain tiling, and premium-quality finishes throughout.

A rare and exclusive address, perfectly integrated into a privileged natural setting, where modernity, authenticity, and serenity blend harmoniously.

An exceptional property, ideal for those who appreciate elegance, comfort, and tranquility.

Brochure available upon request.

Vanessa SOARES – Williams AUREILLE
Prestige Real Estate Consultants – Global Luxury Brand Specialists

Esterel Realty Coldwell Banker – Coldwell Banker Europe
+33 (0)6 72 85 21 09 | +33 (0)6 82 82 25 39
vanessa.soares@coldwellbanker.fr
williams.aureille@coldwellbanker.fr

CARACTÉRISTIQUES

Type de bien :	Maison	Surface :	270.0 m ²	NB de pièces :	5 rooms
NB de chambres :	4 bedrooms				

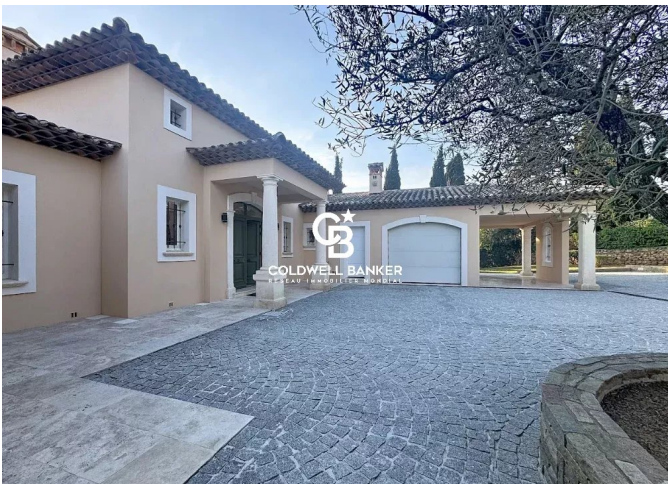
Les informations sur les risques auxquels ce bien est exposé sont disponibles sur le site Géorisques : www.georisques.gouv.fr

DIAGNOSTIC DE PERFORMANCE ÉNERGÉTIQUE

Indice d'émission de gaz à effet de serre (GES) : A 2



COLDWELL BANKER
EUROPA REALTY



44 Avenue du Général Leclerc
France, 83700, Saint-Raphaël



TÉL : +33494193440
esterealty.saintraphael@coldwellb

