

Maison Saint-Paul-de-Vence 265 m<sup>2</sup>

---



PRIX DE VENTE : 1 390 000 €

---

EMAIL : [ARTREALTY@COLDWELLBANKER.FR](mailto:ARTREALTY@COLDWELLBANKER.FR)

## DESCRIPTION

Located in the heart of the historic village, this magnificent 285m<sup>2</sup> apartment occupying the top floor of a village house will charm you with its authentic character.

This spacious triplex has three lovely terraces offering panoramic views of the hills and the sea, all facing west.

The property comprises: on the first level, a large entrance hall, a kitchen, a dining room, an office, a shower room with toilet; on the second level, two bedrooms, a shower room, toilet - on the third level - a living room, a lounge, a master bedroom with dressing room and shower room with toilet, two terraces - on the fourth level, a bedroom with bathroom and toilet, roof terrace.

Great potential, and guaranteed to be a favorite, this superb village apartment with charm and incredible views!

## CARACTÉRISTIQUES

Type de bien :	Maison	Surface :	265.0 m <sup>2</sup>	Taxe foncière :	€1.00
NB de pièces :	7 rooms	NB de chambres :	6 bedrooms		

Les informations sur les risques auxquels ce bien est exposé sont disponibles sur le site Géorisques : [www.georisques.gouv.fr](http://www.georisques.gouv.fr)

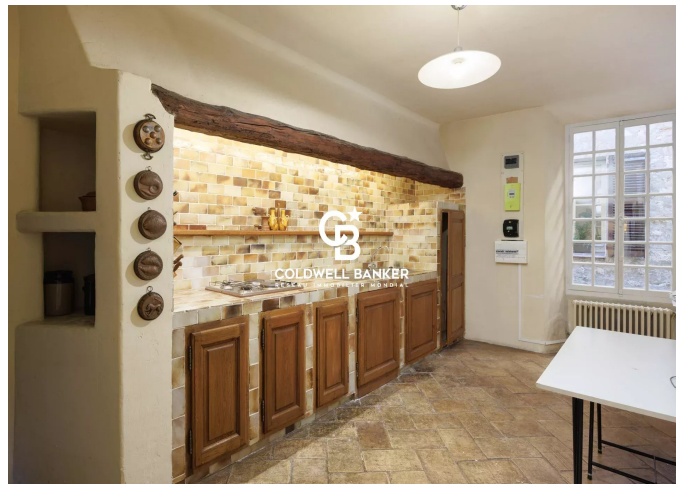
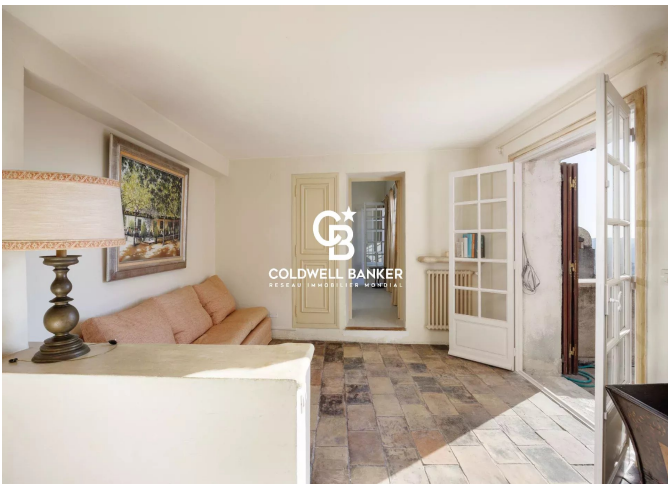
## DIAGNOSTIC DE PERFORMANCE ÉNERGÉTIQUE

Diagnostic de performance énergétique (DPE) : D 192

Indice d'émission de gaz à effet de serre (GES) : D 42



**COLDWELL BANKER**  
**EUROPA REALTY**



777 Route de la Colle  
France, 06570, Saint-Paul-de-Vence



TÉL : +33489973340  
artrealty@coldwellbanker.fr