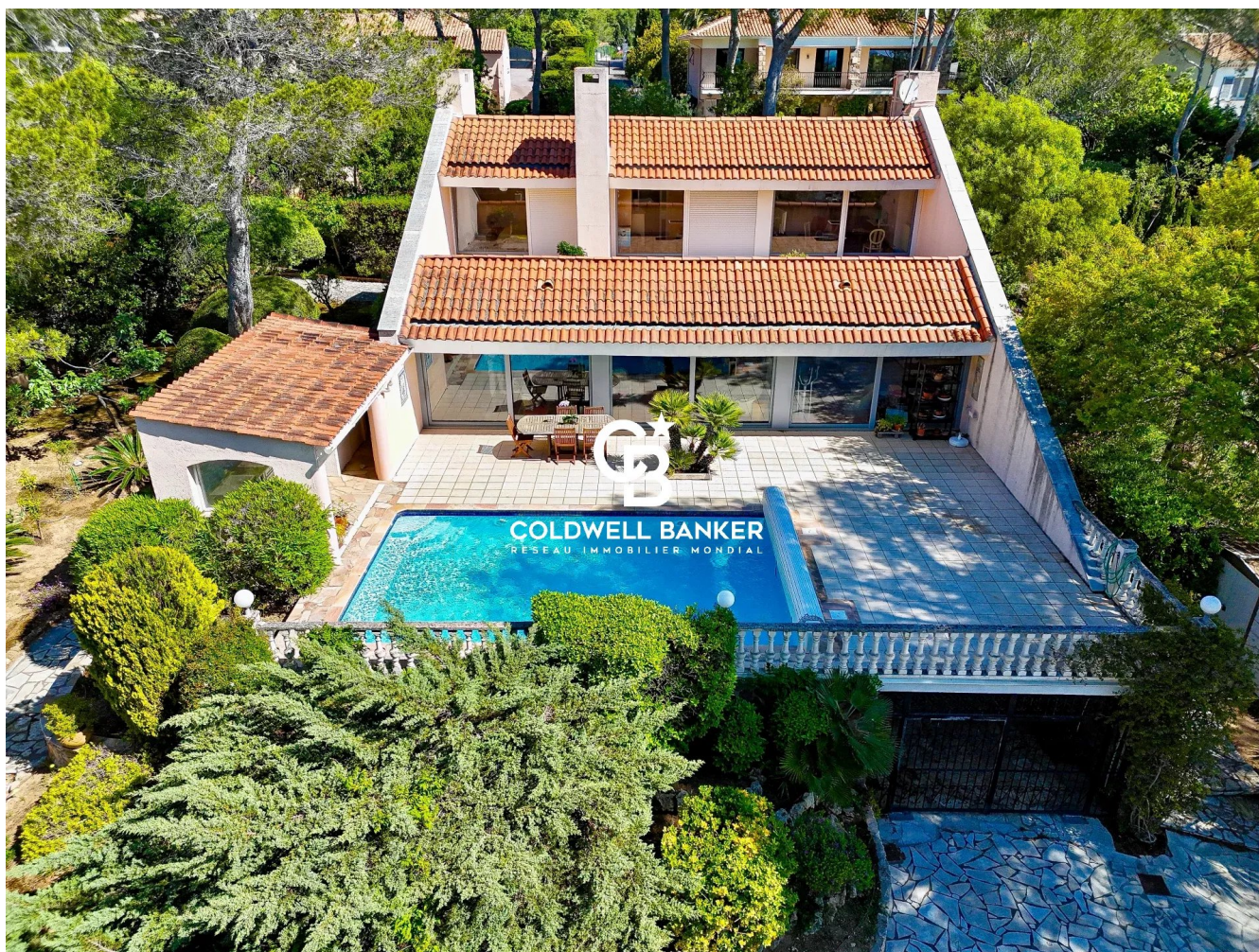


Maison Saint-Raphaël 205 m²



PRIX DE VENTE : 1 250 000 €

EMAIL : ESTERELREALTY.SAINTRAPHAEL@COLDWELLBANKER.FR

DESCRIPTION

Saint-Raphaël Boulouris. An architect-designed villa of more than 200 m² on a plot of 1400 m² offering a beautiful unobstructed view of the sea from its two large south-facing terraces.

This very light property is composed on the ground floor of an entrance hall with WC, a 60 m² living room, a kitchen and a master suite. The upper floor consists of three spacious bedrooms, each with an access to the terrace, as well as a shower room and a toilet.

A swimming pool with a summer kitchen, a large basement and a double garage complete this property.

In a high demand quite area within walking distance of shops and of the sea.

CARACTÉRISTIQUES

Type de bien :	Maison	Surface :	205.0 m ²	Taxe foncière :	€3.00
NB de pièces :	5 rooms	NB de chambres :	4 bedrooms		

Les informations sur les risques auxquels ce bien est exposé sont disponibles sur le site Géorisques : www.georisques.gouv.fr

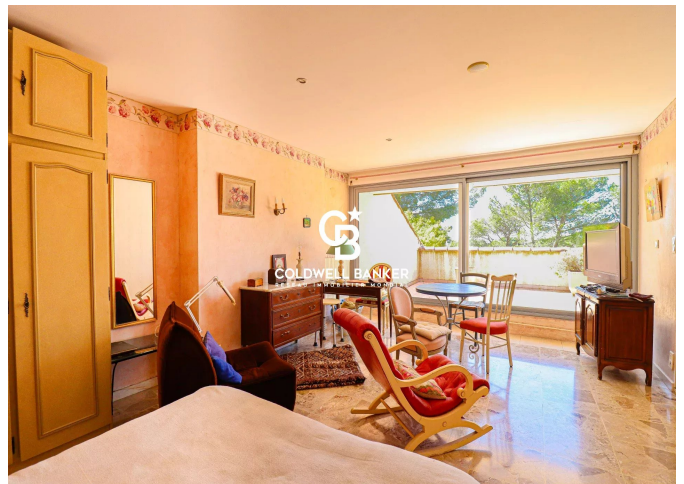
DIAGNOSTIC DE PERFORMANCE ÉNERGÉTIQUE

Diagnostic de performance énergétique (DPE) : D 233

Indice d'émission de gaz à effet de serre (GES) : D 43



COLDWELL BANKER
EUROPA REALTY



44 Avenue du Général Leclerc
France, 83700, Saint-Raphaël



TÉL : +33494193440
esterealty.saintraphael@coldwellb

