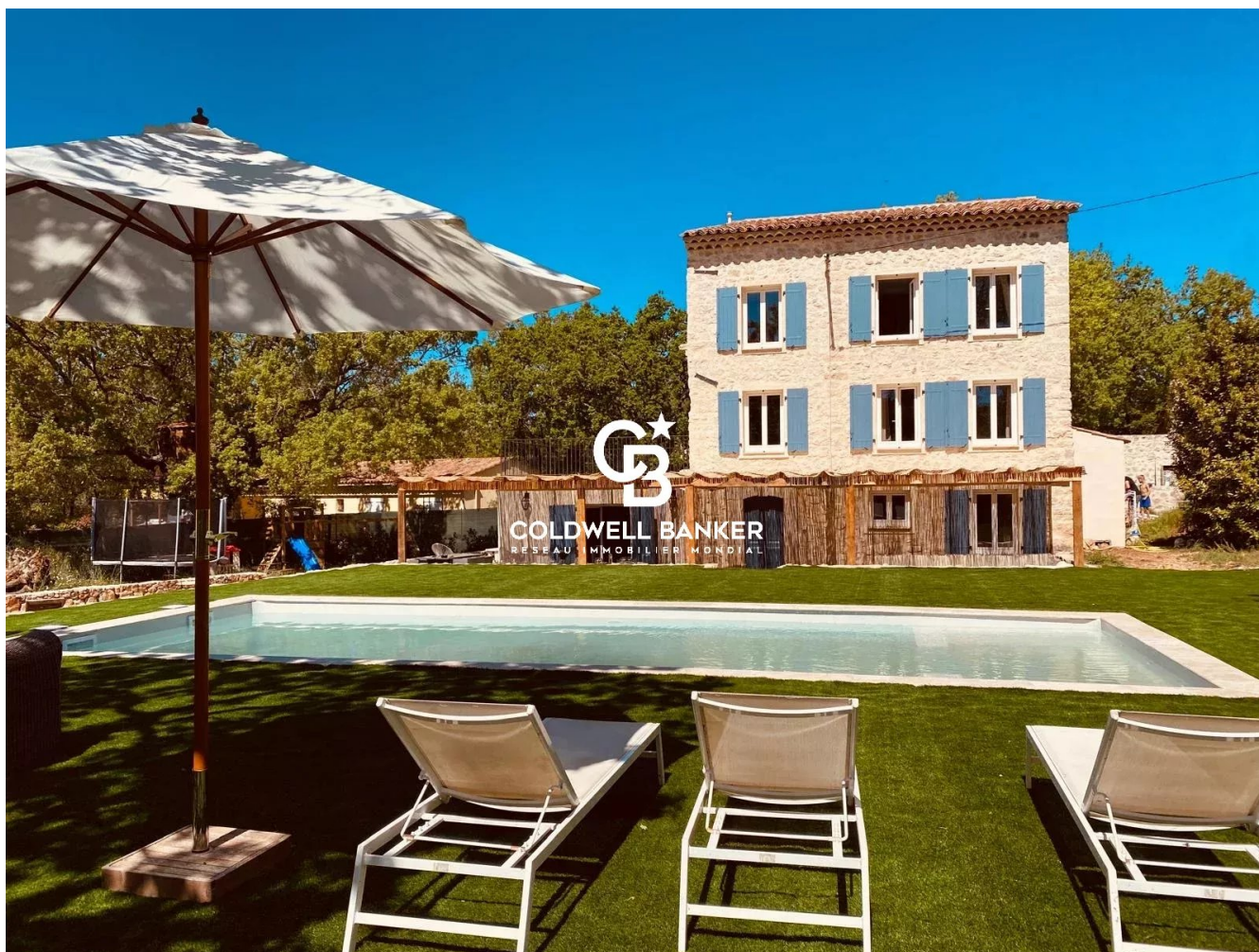


Maison Fayence 192 m²



PRIX DE VENTE : 695 000 €

EMAIL : ESTERELREALTY.SAINTRAPHAEL@COLDWELLBANKER.FR

DESCRIPTION

FOR SALE: Stunning Fully Renovated Stone House in Fayence

Located in a peaceful and green setting. just 5 minutes from shops. discover this charming home offering 192 m² of living space. Fully renovated and air-conditioned. it is nestled on a fenced and landscaped 2.000 m² plot.

Tastefully designed with a Scandinavian style that creates a warm and inviting atmosphere.

Description:

Ground Floor:

- A spacious and bright fully equipped kitchen with a dining area that comfortably seats 10 people.
- A cozy living room with a fireplace.
- A master suite with a private shower room.
- A large shaded terrace.

Upper Floors:

- 3 beautiful bedrooms. each with its own private shower room.
- A converted attic dormitory with its own shower room. perfect for children or guests.
- Several relaxation and storage spaces.

Outdoor Areas:

- 10x4 m pool (fiberglass. chlorine-based) surrounded by synthetic grass for easy maintenance.
- Petanque court and children's play area.
- A large fenced plot with shaded areas for relaxation or entertaining.
- Parking for multiple vehicles. with the option to add a carport or garden shed.

Key Features:

- Thoughtfully designed interior in warm. neutral tones inspired by modern Scandinavian aesthetics.
- Excellent rental investment opportunity:
- Accommodates up to 14 people. rented for €4.000/week during high season.

- Recent and compliant property diagnostics.

Sale Price: €695.000 (agency fees included - seller pays fees)

Esterel Realty today to schedule a viewing!

This property is a rare opportunity. whether you're looking for an investment or your dream home. Don't miss out!



CARACTÉRISTIQUES

Type de bien :	Maison	Surface :	192.0 m ²	Taxe foncière :	€2.00
NB de pièces :	6 rooms	NB de chambres :	5 bedrooms		

Les informations sur les risques auxquels ce bien est exposé sont disponibles sur le site Géorisques : www.georisques.gouv.fr

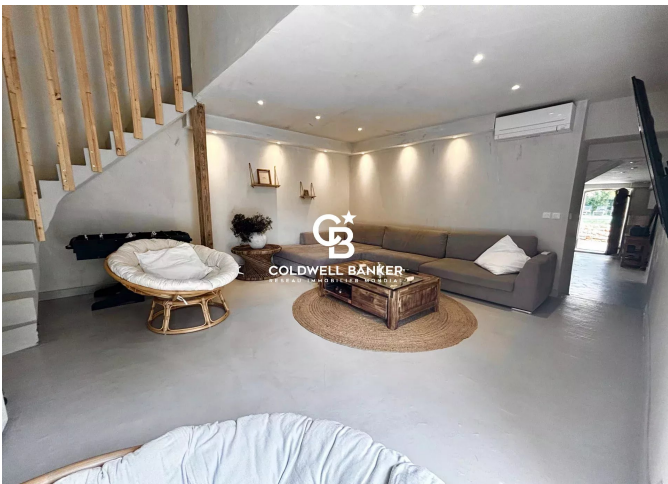
DIAGNOSTIC DE PERFORMANCE ÉNERGÉTIQUE

Diagnostic de performance énergétique (DPE) : C 124

Indice d'émission de gaz à effet de serre (GES) : A 3



COLDWELL BANKER
EUROPA REALTY



44 Avenue du Général Leclerc
France, 83700, Saint-Raphaël



TÉL : +33494193440
esterealty.saintraphael@coldwellb

