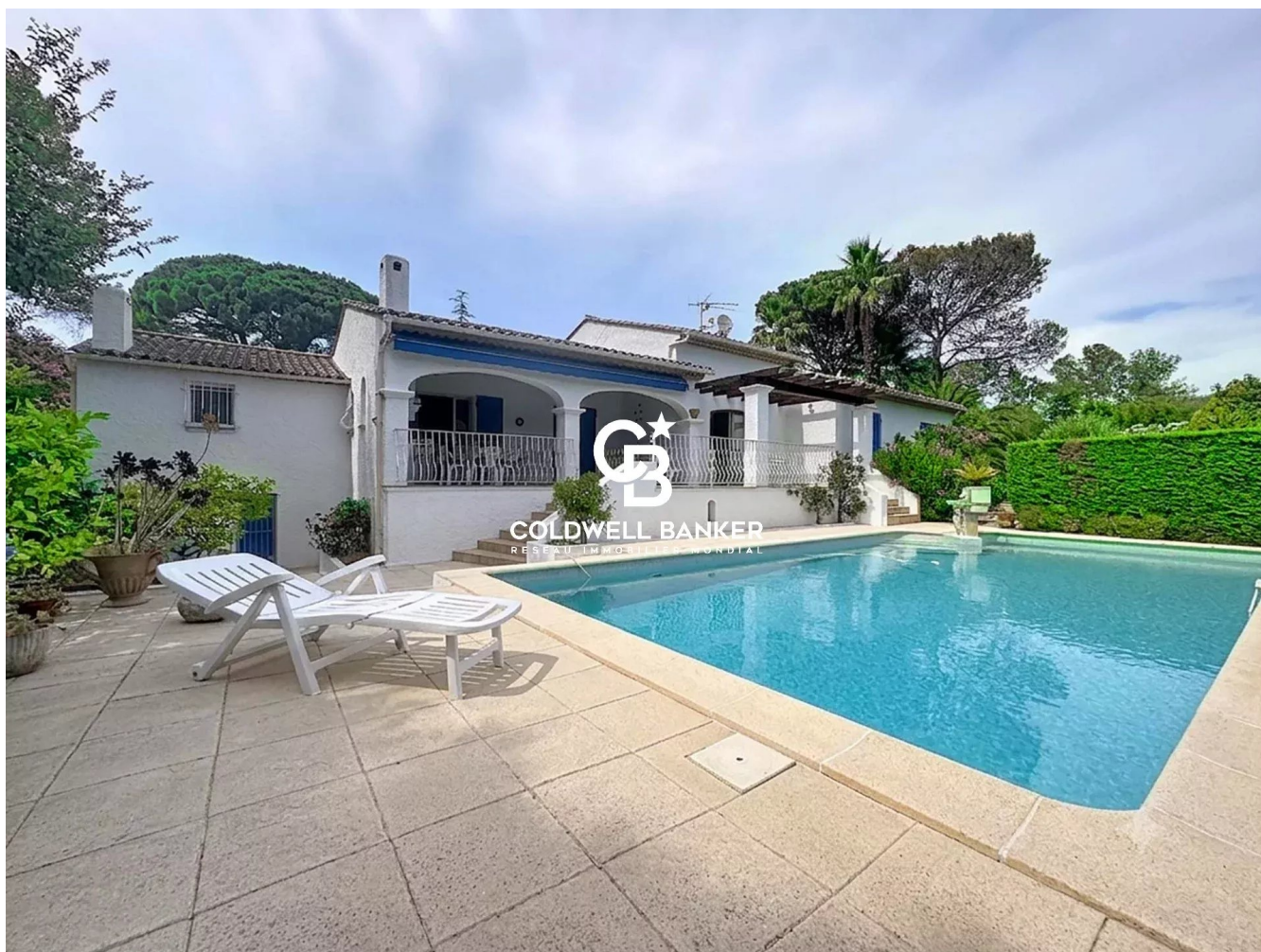


Maison Saint-Raphaël 142 m<sup>2</sup>

---



PRIX DE VENTE : 988 000 €

---

EMAIL : [ESTERELREALTY.SAINTRAPHAEL@COLDWELLBANKER.FR](mailto:ESTERELREALTY.SAINTRAPHAEL@COLDWELLBANKER.FR)



## DESCRIPTION

Nestled within one of Valescure's most sought-after private estates, this beautifully renovated single-storey villa combines timeless elegance, refined finishes, and an exceptional lifestyle setting. Offering complete peace and privacy while remaining within easy reach of shops and amenities, the property is a rare opportunity on the French Riviera.

From the moment you enter, generous volumes and abundant natural light create a warm and sophisticated atmosphere. The spacious reception area features a bright double living room seamlessly connected to an elegant dining area and a fully fitted and equipped contemporary kitchen, designed for both comfort and entertaining. A separate laundry room completes the living spaces.

The sleeping quarters comprise two beautiful en-suite bedrooms, each with its own shower room and private toilet, ensuring comfort and privacy for family and guests alike. A guest WC and an attractive mezzanine overlooking the living room provide additional flexibility, ideal as a home office, reading lounge, or occasional guest bedroom.

Set within approximately 1,400 sqm of meticulously landscaped grounds, the property perfectly embodies the Mediterranean art of living. A saltwater swimming pool blends harmoniously into the garden, while the spacious south-facing terrace, partially covered and featuring a barbecue area, offers the perfect setting for outdoor dining and entertaining throughout the year.

Additional features include a cellar, a carport, and ample on-site parking for several vehicles.

Combining elegance, comfort, and tranquillity within a secure and highly desirable environment, this exceptional property is equally suited as a primary residence or a luxurious holiday home on the French Riviera.

Property tax: €3,500 per year

Vanessa SOARES - Williams AUREILLE  
Prestige Real Estate consultant - Global Luxury Brand Spécialist

Esterel Realty Coldwell Banker - Coldwell Banker Europe

+33 (0) 672 852 109 +33 (0) 682 822 539

[vanessa.soares@coldwellbanker.fr](mailto:vanessa.soares@coldwellbanker.fr)  
[williams.aureille@coldwellbanker.fr](mailto:williams.aureille@coldwellbanker.fr)

44 Avenue du Général Leclerc  
France, 83700, Saint-Raphaël



TÉL : +33494193440  
[esterelrealty.saintraphael@coldwellb](mailto:esterelrealty.saintraphael@coldwellb)



## CARACTÉRISTIQUES

---

Type de bien :	Maison	Surface :	142.0 m <sup>2</sup>	NB de pièces :	4 rooms
NB de chambres :	2 bedrooms				

---

Les informations sur les risques auxquels ce bien est exposé sont disponibles sur le site Géorisques : [www.georisques.gouv.fr](http://www.georisques.gouv.fr)

## DIAGNOSTIC DE PERFORMANCE ÉNERGÉTIQUE

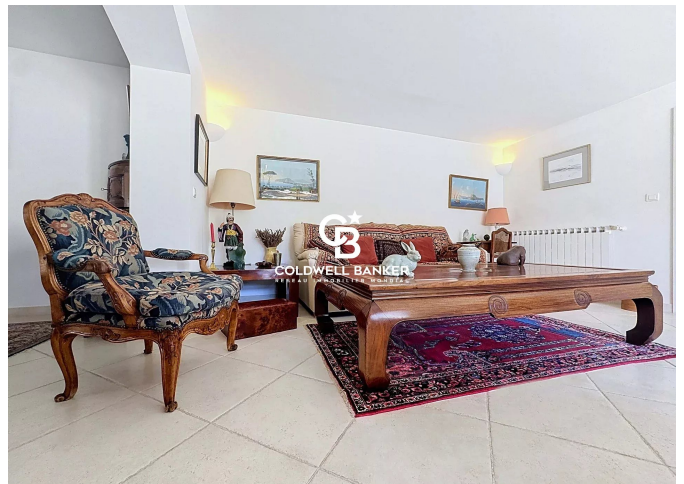
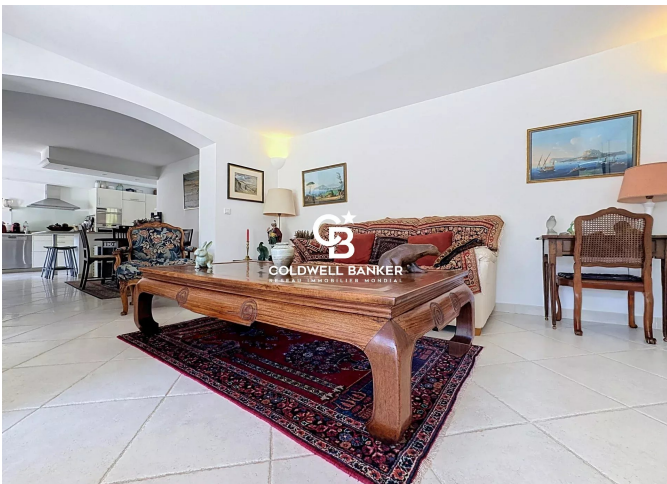
Diagnostic de performance énergétique (DPE) : C 152

Indice d'émission de gaz à effet de serre (GES) : C 24





**COLDWELL BANKER**  
**EUROPA REALTY**



44 Avenue du Général Leclerc  
France, 83700, Saint-Raphaël



TÉL : +33494193440  
[esterealty.saintraphael@coldwellb](mailto:esterealty.saintraphael@coldwellb)

