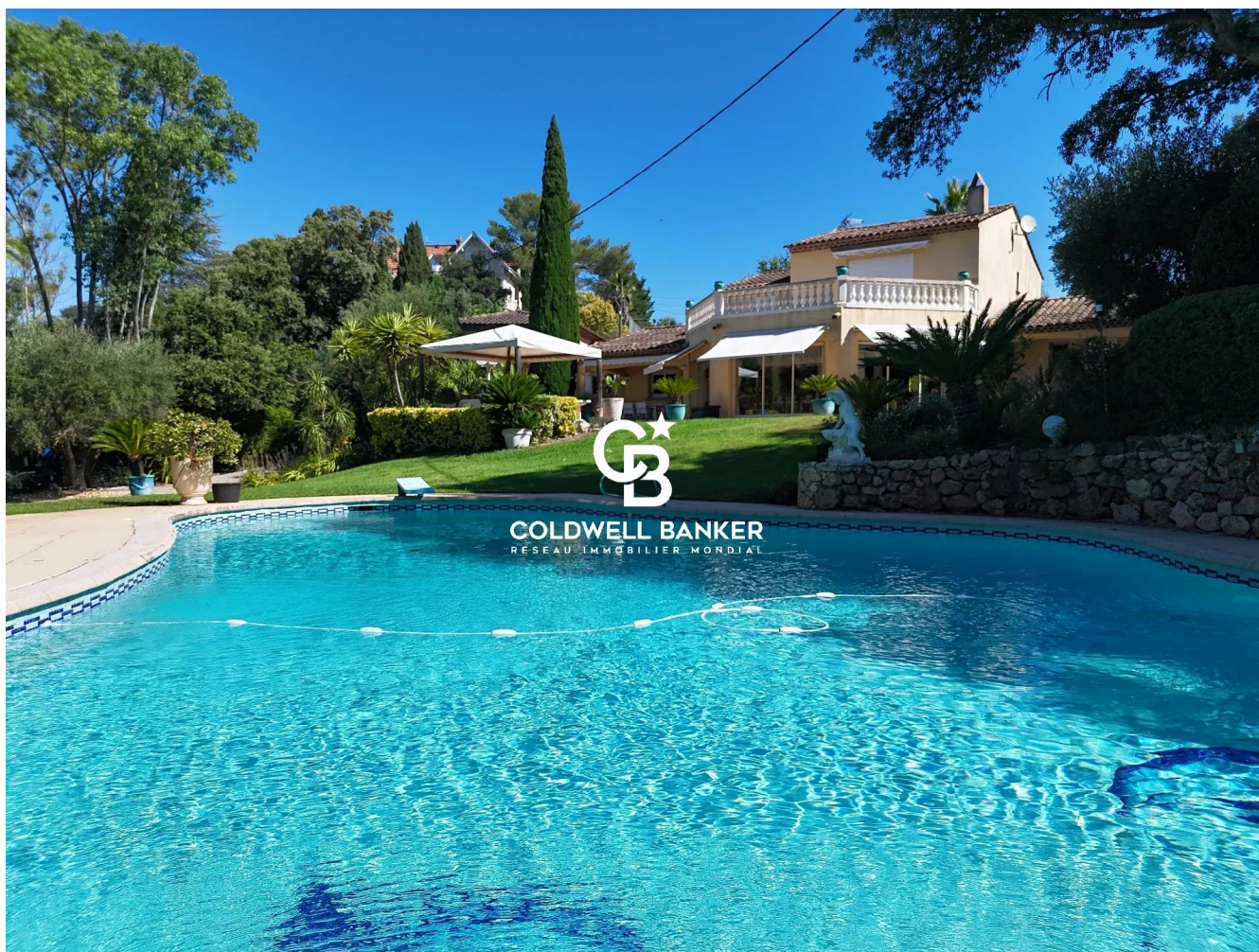


Maison Saint-Raphaël 350 m²



SALE PRICE : 3 200 000 €

EMAIL : ESTERELREALTY.SAINTRAPHAEL@COLDWELLBANKER.FR



DESCRIPTION

Coldwell Banker is proud to present this magnificent 350 sqm Neo-Provençal villa, ideally located in the highly sought-after residential area of Valescure.

Set on beautifully landscaped grounds of 4,196 sqm, this exceptional property captivates with its generous proportions, elegant architecture, stunning swimming pool, and private tennis court, offering a truly exclusive lifestyle in a peaceful and privileged setting.

Upon entering, you are welcomed into a spacious, light-filled reception area featuring an elegant living room and dining room, both opening onto the terraces and landscaped gardens. A fully fitted and equipped separate kitchen completes the living spaces with style and functionality.

The sleeping quarters comprise four superb en-suite bedrooms, including two conveniently located on the ground floor, ensuring optimal comfort and privacy for both residents and guests.

A double garage further enhances the outstanding amenities of this exceptional home, equally suited as a primary residence or a luxurious holiday retreat.

Combining timeless Neo-Provençal charm, generous living spaces, and premium amenities, this outstanding property represents a rare opportunity in one of Valescure's most prestigious addresses.

FEATURES

Property type:	Maison	Area:	350.0 m ²	Number of rooms:	7 rooms
Number of bedrooms:	4 bedrooms				

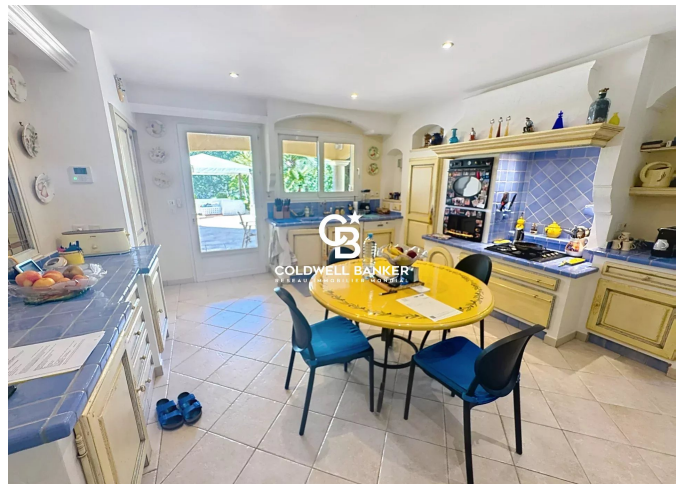
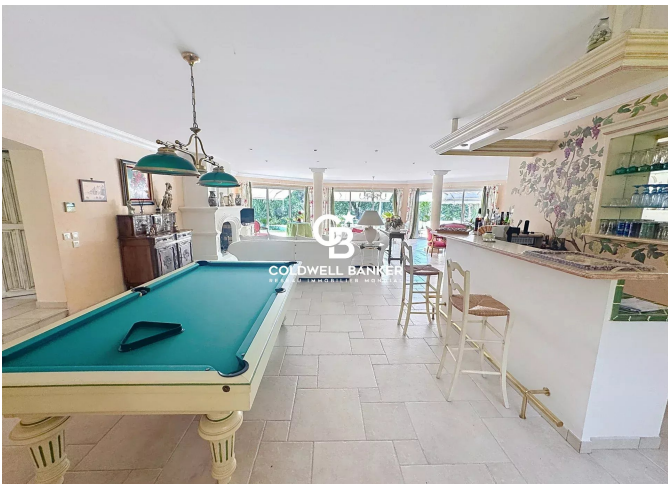
Information on the risks to which this property is exposed is available on the Géorisques website: www.georisques.gouv.fr

ENERGY PERFORMANCE DIAGNOSIS

Energy performance diagnosis (EPD): C 121



COLDWELL BANKER
EUROPA REALTY



44 Avenue du Général Leclerc
France, 83700, Saint-Raphaël



PHONE : +33494193440
esterealty.saintraphael@coldwellb

