

Maison Vence 275 m²



PRIX DE VENTE : 3 450 000 €

EMAIL : ARTREALTY@COLDWELLBANKER.FR

DESCRIPTION

Perched in one of the most sought-after locations in the hills above Vence, this exceptional property boasts a breathtaking panoramic view, stretching across the Mediterranean from Cap Ferrat to Cap d'Antibes.

Set in a commanding position at the end of a discreet and tranquil cul-de-sac, this south-facing villa enjoys optimal sunlight from morning until evening. Recently renovated to the highest standards, it offers a seamless blend of contemporary comfort, refined aesthetics, and the finest materials. Every detail has been carefully considered — from cutting-edge home automation and bespoke joinery to completely renewed infrastructure.

Never lived in since its renovation, the property may be sold fully furnished. The kitchen, a true showpiece, was custom-designed by renowned craftsmen using raw wood and quartzite, showcasing exceptional artisanal quality.

The villa comprises two magnificent principal suites, two additional bedrooms sharing a stylish shower room, and two independent studio apartments — ideal for hosting guests or extended family in complete privacy.

Both indoors and out, the living spaces have been thoughtfully designed to promote both conviviality and calm. A striking dining area with cathedral ceiling, open to the kitchen, provides a warm and elegant setting for cherished gatherings.

The largely flat grounds have been beautifully landscaped with ancient olive trees and Mediterranean flora, offering numerous tranquil corners and generous terraces surrounding a superb swimming pool — a true haven of relaxation and natural beauty.

A rare property where elegance meets serenity in an effortlessly inspiring setting. Photography alone cannot capture its essence — this villa must be experienced in person to be truly appreciated.

CARACTÉRISTIQUES

Type de bien : Maison Surface : 275.0 m² NB de pièces : 8 rooms

Les informations sur les risques auxquels ce bien est exposé sont disponibles sur le site Géorisques : www.georisques.gouv.fr

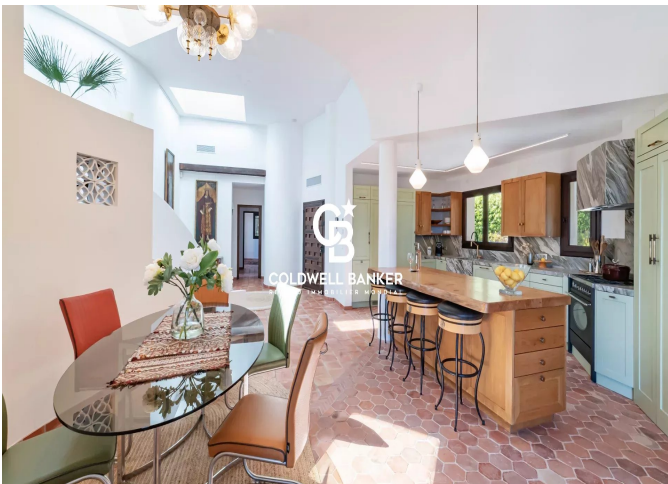
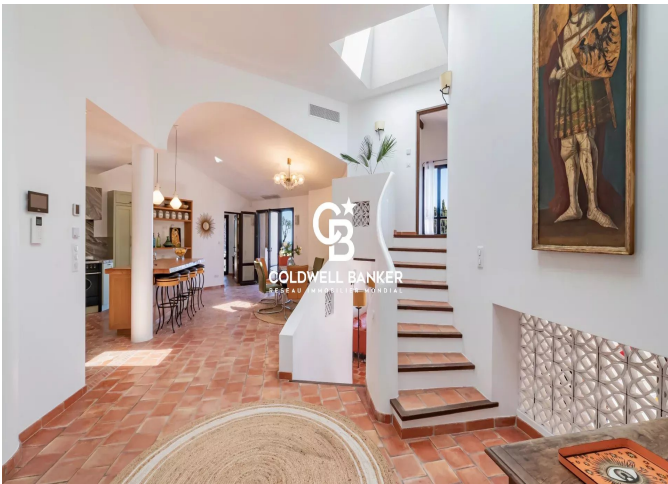
DIAGNOSTIC DE PERFORMANCE ÉNERGÉTIQUE

Diagnostic de performance énergétique (DPE) : C 127

Indice d'émission de gaz à effet de serre (GES) : A 4



COLDWELL BANKER
EUROPA REALTY



777 Route de la Colle
France, 06570, Saint-Paul-de-Vence



TÉL : +33489973340
artrealty@coldwellbanker.fr