

Terrain Vallauris 1 m²



PRIX DE VENTE : 720 000 €

EMAIL : STANDINGREALTY@COLDWELLBANKER.FR

DESCRIPTION

Situated in a peaceful environment, this exceptional plot of land not only benefits from a rare and sought-after location, but also from magnificent views of the sea and surrounding hills. The 1600m² plot offers generous space to build your dream home, complete with a swimming pool, landscaped garden, and all the amenities you could wish for.

A building permit for a buildable area of 228m² on two floors has been granted and cleared. This exceptional plot of land is a true gem on the market. For more information and to arrange a viewing, please contact us.

CARACTÉRISTIQUES

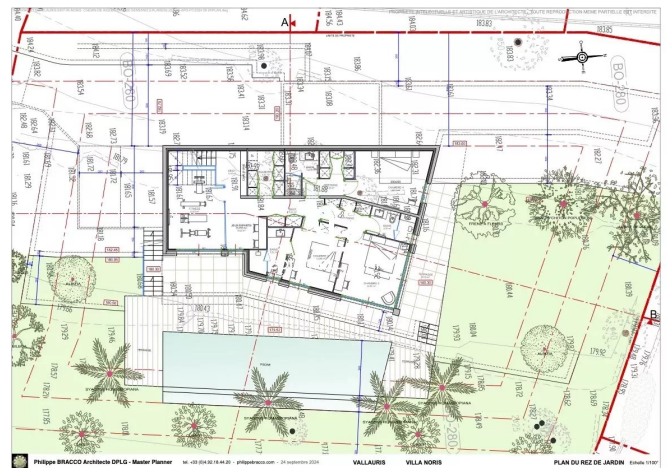
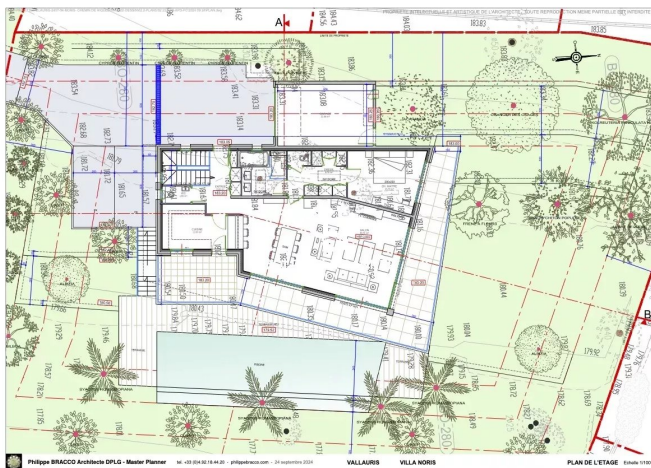
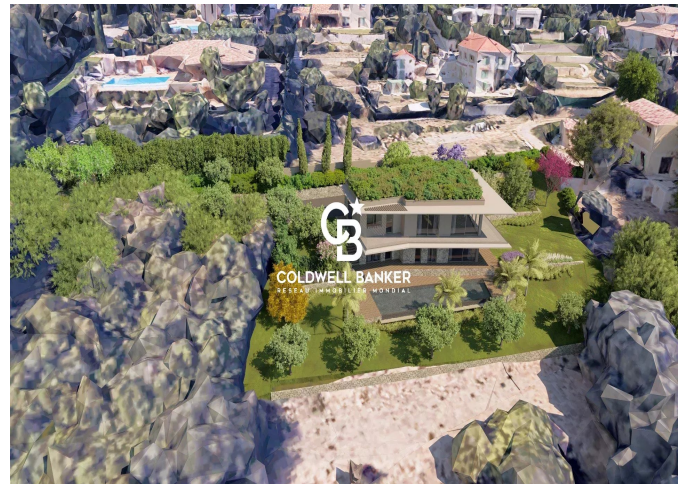
Type de bien : Terrain Surface : 1700.0 m²

Les informations sur les risques auxquels ce bien est exposé sont disponibles sur le site Géorisques : www.georisques.gouv.fr

DIAGNOSTIC DE PERFORMANCE ÉNERGÉTIQUE



COLDWELL BANKER
EUROPA REALTY



11 rue Chauvain
France, 06000, Nice



TÉL : +33493852932
standingrealty@coldwellbanker.fr